

# THE BUILDINGS OF MOREFA BORTH

- the Marsh Harbour

Ceredigion



That part of Borth Village on a pebble bank with the sea on one side and the Cors Fochno marsh some reclaimed and the railway on the other. In the distance is the River Dyfi. Photograph Michael Lewis

Photographs and History by BERYL LEWIS

*This work is for research and educational purposes only.*

## YSTRAD COTTAGE Morfa Borth

On the beach side in the northern part of Borth High Street. Built after 1848 but by 1886. Formerly called Jasper Cottage. Home of a railway platelayer William Evans and his wife for many years.



Ystrad Cottage is one of Morfa Borth's northernmost small cottages. It is one storey but also has an attic floor in the roof lit by dormer windows in the front and back of the roof. There are no chimneys. The cottage is single fronted and very narrow. It is set back from the street a little, but the front is in line with at least nine other buildings to the north of it, many of them rebuilds of old cottages. A feature of the front is its lean to porch with a shallow roof which has the front door on the northern side of it. The windows and door are modern but the dormer and porch keep the pattern of the old casements with small lights, and the front ground floor window has the old sash pattern with twelve lights. The narrow front garden area of the cottage is enclosed by walls but opens on to the street. The walls are rubble stone and rendered.

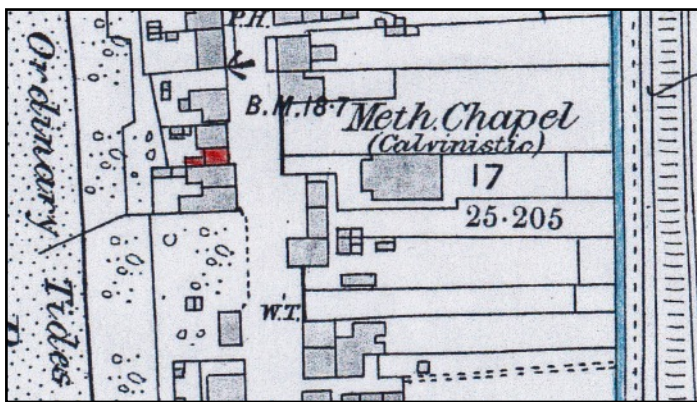


*Ystrad Cottage from the beach in 2016. From its dormer window there is a good view of the sea. A double set of fences protect it against the sea.*

The ground for this house is the stone bank thrown up by the sea and called 'waste' by the Crown Manor who owned it as it was no use for farming. On a map of 1829 it was beach (National Archives LRRO 1/3060) The road had been there for centuries, it was used in the twelfth century and was a turnpike road by the 1770s. It led to a ferry from Ynyslas to Aberdovey and was a quick way to North Wales. Fresh water for the cottages and houses came from a brook behind the buildings on the other side of the road.

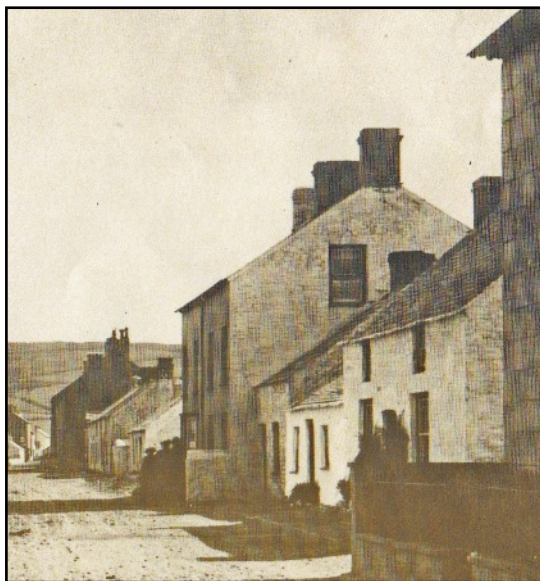
In 1848 there was a cottage next door (now replaced by Ystwyth) with an extension on the ground that today has Ystrad. It had beach either side of it. Because beach side cottages had no gardens they paid no tithe so we have no details about them. (Tithe Apportionments Map Llangihangel Genau'r Glyn, Cyfoeth Township - on line at CYNEFIN - National Library of Wales).

It is not possible to find this cottage in the 1871 and 1881 Census. They had no individual names, and if it was there it was part of Libanus Place named after the Chapel across the street. It was however on a map of 1886.



*In 1886 the cottage shared a yard with the cottage next door which the surveyor has shown indicated shared ownership. The small building in the yard probably had its Ty Bach, outside lavatory. There were three fences to protect them from the sea and these were usually rows of stakes at an angle hammered into the stone bank. Detail from the 25 inch Ordnance Survey Map, surveyed in 1886 and published in 1888. Cardiganshire III.10)*

In the 1891 Census it had a name, Jasper Cottage, and in the cottage was a very elderly widow Mary Hughes aged 84 with her 'own means'.

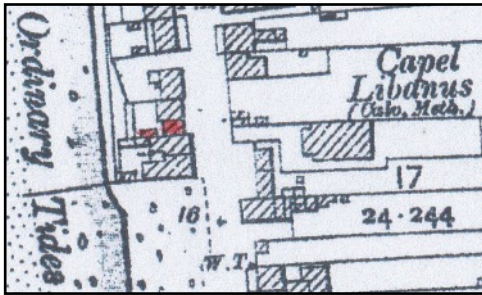


*We can see the cottage in this detail from a postcard dated 1895. It is the third cottage from the right, a little taller than its neighbour, and it had a large chimney. There was no dormer window. We can see one door and one window and the front is rendered but very plain. The gable end shows it was a rubble stone wall. The cottage opened directly on to the street.*

At the 1901 Census the cottage had its name 'Ystrad Cottage'. In the cottage was a railway plate layer, William Evans, 29 years old, born in Glamorganshire in Ystradfodwy, and that is probably why he gave the cottage that name. With him was his 25 year old wife Margaret, she was local, and a two year old daughter Mary. They spoke both Welsh and English.

In 1910 for a tax planned but not levied Ystrad was valued at £40 with £1.12s to pay, £2 gross. William Evans owned it, and was the occupier. In the 1911 Census the cottage was listed with just three rooms. This suggests two rooms downstairs, a loft in the roof for the

children and probably a back kitchen in the extension into the yard at the back which did not count as a 'main room'.



*LEFT In 1904 the cottage appears the same, still in shared ownership. Either William Evans began by renting it from the owner of Ystwyth next door or he owned both of them (Detail from the 25 inch Ordnance Survey Map, revised in 1904 and published in 1905. Cardiganshire III.10)*

In 1911 a self employed house painter, John William Davies born in Aberystwyth was in the cottage with his wife Helena J. Davies who was 28 and local. With them were their young children; John Eric Davies 4, William C. Davies 3, David H. Davies 1 and a baby Eleanor A. Davies. The family spoke both Welsh and English. They would have been tenants or relatives of William Evans.

The Evans family themselves were living in the cottage by October 1924 (Cambrian News, November 7<sup>th</sup>.) William Evans paid the rates from 1925 to 1949 as owner and occupier and William and Margaret Evans had votes for the cottage in the General Election of 1945. Mr Evans died in 1954 aged 82 and his wife Margaret Eleanor Evans in 1955 aged 80 (Parish Register St Matthew's Church Borth, Ceredigion Archives)

Paying the rates for the cottage in 1963 was Millicent Smart and no-one had a vote for it which suggests she may not have been living there all the time (Electoral Registers and Rates, Ceredigion Archives).

Archifdy Ceredigion Archives  
yn cyflwyno / presents  
**Tai'r Borth / Houses of Borth**  
gan/by Beryl Lewis  
[cyf/ref ADX/1629]

Mae **Tai'r Borth** yn cynnwys dros 350 hanes sy'n ymwneud ag adeiladau unigol ac mae'r hanesion wedi'u darlunio â chyfoeth o ffotograffau, mapiau a dogfennau. Mae'r ffeiliau ar gael ar ein gwefan: <https://www.archifdy-ceredigion.org.uk/tairborth.php?lang=cy>

Hoffem ddiolch i Beryl am fod mor garedig â chaniatáu i ni rannu ei gwaith â'r gynulleidfa ehangaf bosibl.

Ceidw Beryl Lewis yr hawlfraint yn ei gwaith ac mae'r hanesion yn cael eu rhannu at ddibenion preifat ac ymchwil yn unig.

**Houses of Borth** consists of over 350 histories of individual buildings, lavishly illustrated with photographs, maps and documents. All the files are available from our website: <https://www.archifdy-ceredigion.org.uk/tairborth.php>

We would like to thank Beryl for her kindness in letting us share her work with the widest possible audience.

Beryl Lewis retains the copyright in her work and the histories are made available for private use and research only.



Cyngor Sir  
**CEREDIGION**  
County Council



Archifdy  
Ceredigion  
Archives