

THE BUILDINGS OF MOREFA BORTH

- the Marsh Harbour

Ceredigion



That part of Borth Village on a pebble bank with the sea on one side and the Cors Fochno marsh some reclaimed and the railway on the other. In the distance is the River Dyfi. Photograph Michael Lewis

Photographs and History by BERYL LEWIS

This work is for research and educational purposes only.

YNYS DERI called Dalston House by 1891.

Morfa Borth - the Marsh Harbour

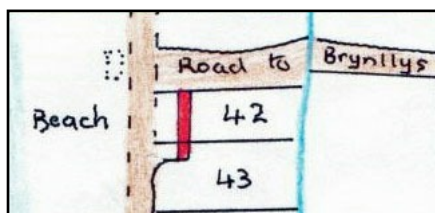
There was a cottage on this site in 1845. It had the name 'Glanryhd' - meaning 'by the ford' - because there was a ford not far away on the lane to Ynysfergi and Brynlllys where the brook that ran at the end of the gardens behind the High Street houses crossed the lane. There is a ditch there today. Home of mariners and their wives some of them descendants of Lewis Lewis a weaver. Ynys Dairy was a shop that sold milk by 1934.



Ynys Deri in February 2015.

This is a single fronted cottage joined to Glanrhyd House next door on the north. It has an upper floor partly under the roof. The walls are rendered, and likely to be rubble stone, as is its substantial chimney. This has two chimney pots. The cottage has a gable roof parallel to the street of a slate colour. Facing the street there is one upstairs sash window. Below is a large modern window and a moulding projects above it. The front door is also modern. The narrow front garden is enclosed by a rendered wall of waist height, possibly brick, with a moulded top. There is a front gate with a brick gatepost. Ynys Deri has not been able to extend backwards as an older cottage called Glanrhyd Cottage is partly behind it.

The ground on which Ynys Deri stands was enclosed by Lewis Lewis, a weaver, in 1823 from the pebble embankment thrown up by the sea, and called 'waste' because it was no use for farming. Lewis's ground measured 1 rod (a quarter of an acre) and extended to a brook.

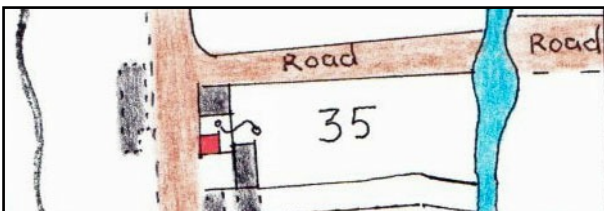


LEFT Lewis built cottages on it, by 1829 a terrace set back from the street, marked in red. Today only Glanrhyd Cottage remains from this. (Detail copied from a Map National Archives LRRO 1/3060).



ABOVE The rear of the house in 2019. This east wall shows many rounded stones from the beach. The chimney is red brick.

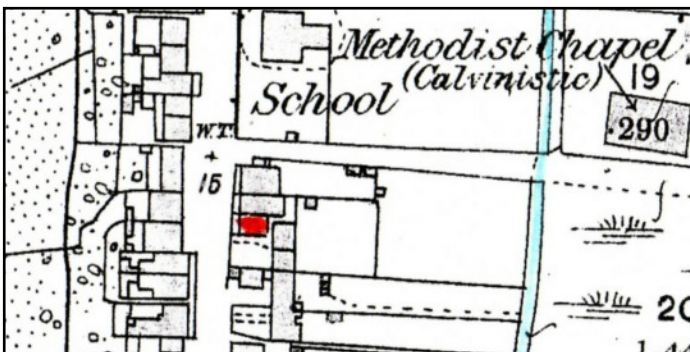
The road was centuries old having been a quick way to North Wales crossing the River Dovey by ferry to Aberdovey. It was a turnpike road by the 1770s.



LEFT By 1848 Lewis had built Ynys Deri, at the roadside, marked in red, just in front of the older cottages. Ynys Deri was quite small and shared the garden all the way to the brook with the other cottages. The ford 'rhyd' was clearly drawn. The curly S mark indicated that there

was the same owner for all the cottages on Number 35 (A detail copied from *The Tithe Apportionments Map for Llanfihangel Genau'r Glyn, Cyfoeth Township*. The ford was clearly drawn, (map on-line at Cynefin).

It is not possible to trace the inhabitants in earlier Census's, but by 1881 living in the cottage was a mariner's wife, Margaret Davies with her sons John Davies and Evan V. Davies. She was aged 32 and born in Borth about 1849.

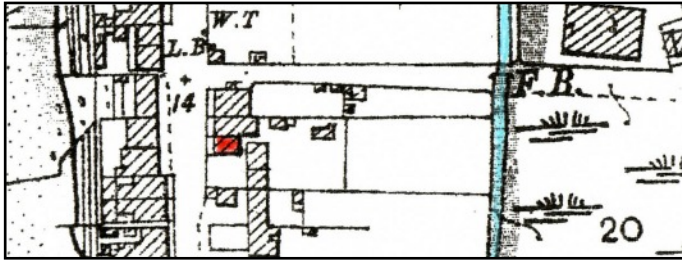


LEFT In 1886 it was much the same - but a new cottage now Glanrhyd House had been added next door. Ynys Deri is marked in red. It had a narrow front garden as it does today. Two of the row of old cottages are still behind it and Munding is not built yet. The cottage shared a small garden or yard with Glanrhyd House. (This is a detail from the 25 inch Ordnance Survey Map of

1888, surveyed in 1886, Cardiganshire NW III.10)

By the 1891 Census the cottage was called Dalston House, and living there was Captain John Hugh James, a master mariner, a Borth man, aged 35, born about 1856 and his wife Ellen, also from Borth, born about 1857.

It was still called Dalston House at the 1901 Census, and in the cottage was a married woman, Elizabeth J. Lewis age 41 and born in Borth about 1860, with three sons, John James Lewis 11, David L. Lewis 9, and Evan William Lewis 7. Her father in law, David James, an 80 year old retired farmer was there too.



In 1904 little had changed. The small buildings at the back were probably Ty Bach's outside lavatories, and possibly pig sties. The cottages still shared a garden, suggesting one owner for all of them - probably a descendant of Lewis Lewis the weaver. His direct descendants were living next door in one of the old

cottages set back from the street that is now called Glanrhyd Cottage.

In 1910 for a valuation for a tax planned but not levied this cottage was valued at £76. There would have been £4 to pay, £5 gross. The owner and occupier was Evan Lewis. (Ceredigion Archives and the NLW).



On this old postcard Ynys Deri is the third cottage from the left, with a front door and windows where they are today. It was a pair with Glanrhyd House next door, they are both taller than Glanrhyd Number 1 in the foreground. Ynys Deri had the fat stone chimney on the southern end

At the Census of 1911 the cottage, still called Dalston House was listed with just three rooms - but this would not include any scullery at the back. In the cottage was Evan Lewis, a 52 year old mariner, born in Borth, and his wife Elizabeth J. (Eliza Jane) Lewis. They had been married for 21 years, with four children, all still living. Alfred, aged 7 the youngest was in the cottage. In 1918 their son David Llewellyn Lewis who was the bosun of the steamship Heath Park was drowned when the ship was torpedoed. (Terry Davies, Borth; A Maritime History, page 97)

of its roof as it does today. The walls were rubble stone, possibly with some whitewash. Grass and earth was the pavement (Postcard courtesy of Peter Fleming)

Paying the Rates in 1925 was Eliza Jane Lewis.

In 1934 John James Lewis was the owner, and living there was Evan Lewis, and the cottage had become the Dalston Milk Shop. Evan Lewis paid the rates for his house and shop in 1949.

In 1957 it was called the Ynys Dairy - so it was still selling milk. Paying the rates was A. E. Richards. In 1963 A. E. Richards paid the rates for it and the house was still the 'Ynys Dairy'. (Rates, Ceredigion Archives) Where the cows were for the milk I do not know as yet. There was a field at the rear but there was possibly an arrangement with a farm nearby to supply the milk. In 1949 Mr Richards was the proprietor of the 'Welsh Kitchen', was a rural district councillor and was on various local committees.

In 1975 the house appeared to own the old Glanrhyd Cottage, and it had the field at the back too which was shared with Munding and Dinorwic (Historic Maps Online)



LEFT This modern Council Map which puts the house name above its place, shows the old Glanrhyd Cottage close to it. Behind them is another house (Detail from a Council Map courtesy of Councillor Ray Quant when assisting research for a local event)

Archifdy Ceredigion Archives
yn cyflwyno / presents
Tai'r Borth / Houses of Borth
gan/by Beryl Lewis
[cyf/ref ADX/1629]

Mae **Tai'r Borth** yn cynnwys dros 350 hanes sy'n ymwneud ag adeiladau unigol ac mae'r hanesion wedi'u darlunio â chyfoeth o ffotograffau, mapiau a dogfennau. Mae'r ffeiliau ar gael ar ein gwefan: <https://www.archifdy-eredigion.org.uk/tairborth.php?lang=cy>

Hoffem ddiolch i Beryl am fod mor garedig â chaniatáu i ni rannu ei gwaith â'r gynulleidfa ehangaf bosibl.

Ceidw Beryl Lewis yr hawlfraint yn ei gwaith ac mae'r hanesion yn cael eu rhannu at ddibenion preifat ac ymchwil yn unig.

Houses of Borth consists of over 350 histories of individual buildings, lavishly illustrated with photographs, maps and documents. All the files are available from our website: <https://www.archifdy-eredigion.org.uk/tairborth.php>

We would like to thank Beryl for her kindness in letting us share her work with the widest possible audience.

Beryl Lewis retains the copyright in her work and the histories are made available for private use and research only.



Cyngor Sir
CEREDIGION
County Council



Archifdy
Ceredigion
Archives