

# THE BUILDINGS OF MOREFA BORTH

- the Marsh Harbour

Ceredigion



That part of Borth Village on a pebble bank with the sea on one side and the Cors Fochno marsh some reclaimed and the railway on the other. In the distance is the River Dyfi. Photograph Michael Lewis

Photographs and History by BERYL LEWIS

*This work is for research and educational purposes only.*

# Y WERN also called Wern Cottage

Morfa Borth - the Marsh Harbour

Previously Craig-y-don Place and Craig-y-don Bach. On the east side of the southern section of the High Street and set back from the street.



*ABOVE Y Wern in 219.*



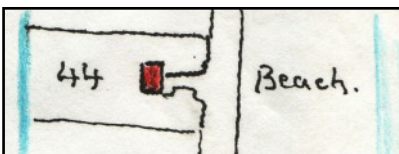
An almost two storey house at the front and a wing of two storeys on the south side at the rear, both with rendered walls. The roof has red ridge tiles and there are brick chimneys on both ends of the roof of this front section. Today the front door is protected by a porch. The house had begun as a cottage by 1829, and the front door is not in the centre as the northern ground floor front room was the main living room and was larger than the room on the south side. At this date it is likely the walls are rubble stone or possibly some are mud, though the party wall with Aeron is rubble stone. In front of the house is hard standing, and no enclosed garden. The house is reached by a passageway between the tall London House and Steeplejacks, formerly Craig-y-don.

*LEFT The wing at the rear is built of brick and has a chimney which extends into the garden of Aeron next door.*



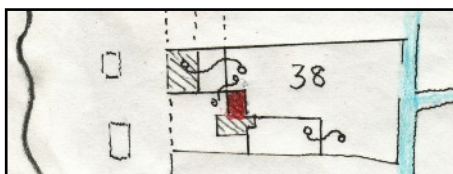
*ABOVE The rear of the house in 2019. There is an access lane in the foreground which leads to the lane to Borth Zoo.*

The ground for this house was enclosed from the pebble embankment 'waste' in 1820 by Hugh Hughes. The ground measured 1 rod 19 perches, and extended to a brook. On a map of 1829, Number 44, it is shown with a cottage built on it. A rent of £1.3s. had to be paid every year to the Crown manor who owned the ground. The cottage was set back from the street, and opposite was the beach. The road had been there for centuries being a quick way to North Wales via a ferry to Aberdovey. It became a turnpike road in the 1770s.



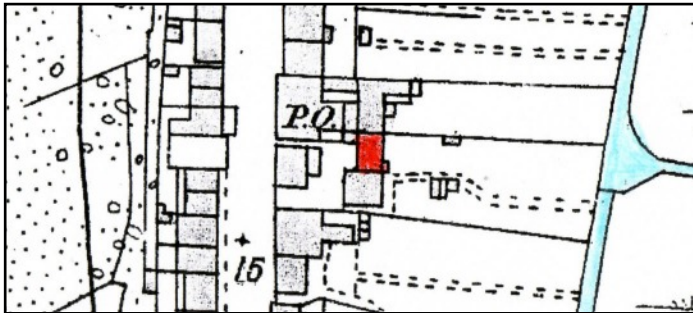
*ABOVE The cottage in 1829, a detail after the National Archives Map LRRO 1/3060.*

By 1848 the ground had a new owners, and more cottages. Ebenezer Lewis and others owned all the cottages and all the ground, Number 38 and William Jones and others occupied them. The earlier cottage was still there, and a cottage alongside that would become Aeron. Also another much larger building beside the street up against the northern boundary of the ground is on the site of London House. Cottages were beginning to be built on the beach side of the street too.



*LEFT The cottage in 1848 marked in red. A detail from the Tithe Apportionments Map for Llanfshihangel Genau'r Glyn, Cyfoeth Township, on-line at CYNEFIN.*

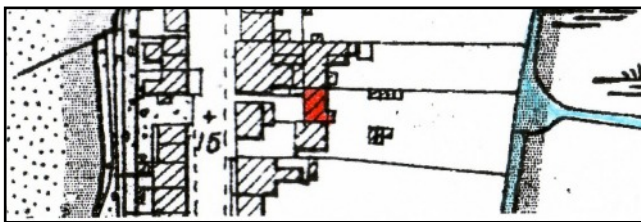
In 1881 the cottage was called Craig-y-don Bach and living there was a mariner's wife, Jane Davies, with small sons John James Davies aged 4 and David Davies aged 2. Jane was 44, and born in Borth about 1837.



*LEFT* On the 25 inch Ordnance Survey Map of 1888, surveyed in 1886 the old cottage was still there, marked in red, and London House was built, it was the post office, P.O. and had buildings behind it and its own garden. Craig-y-don was also built beside the street. The old cottage, Aeron next door on the south and

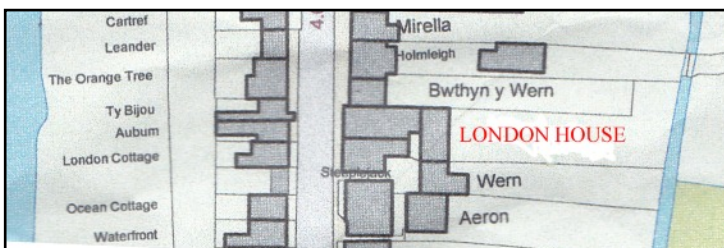
Craig-y-don shared the garden - suggesting one owner for them all, and Aeron had a path leading to the brook. Small buildings at the back would be a Ty Bach and perhaps a pig sty.

In 1901 in the cottage at the Census was Margaret Lunt, a laundress who would have carried water up to the cottage from the brook. She was the daughter of a mariner William Lunt of Morfa Borth and his wife Jane, and was baptised on March 7th 1857. She had not married. Though she had no husband in also in the cottage was her 16 year old son William John Lunt who was aged 16 and a pupil teacher.



*LEFT* On the map of 1905 revised in 1904 little had changed except a wall added between Craig-y-don and Aeron. London house had grown larger (Detail from the Ordnance Survey 25 inch Map, Cardiganshire NW III.10).

For a valuation for a tax planned but not levied the cottage was valued at £41, with £2.8s, £3 gross to pay, and in the Census for 1911 it was listed with three rooms - most likely a ground floor kitchen/living room with a fireplace, a central passage from the front door, and a bedroom on the other side of the ground floor. There would have been a ladder or stairs to a



loft under the roof. Margaret Lunt, was still there and William John Lunt, was 25 and a student of theology. Also in the cottage was her 10 year old niece Jennie Davies. Margaret did not own the cottage, it was owned by Jane Lewis who also owned Craig-y-don.

Margaret Lunt was still there in 1925 and 1934 and John Lewis living at Craig-y-don owned the cottage. He was a local man, a marine engineer a 'worker at sea' and born in Borth about 1866.

In 1949 the cottage had a new name, Wern Cottage and the owner paying the Rates was Marion Rowlands.

In 1957 and 1963 Miss Dorothy L. Wilson paid the rates for Wern Cottage and she had a vote for the house in 1963 (Rates and Electoral Registers, Ceredigion Archives)

At some time rebuilding has turned the three room cottage into a two storey house with a useful extension on the rear.

By 1975 the house had its own narrow rear garden and a generous extension on the back  
(Detail from Historical Maps on-line)

*LEFT All but the extension is on the site of the cottage of 1829 which is an interesting survival.*

Archifdy Ceredigion Archives  
yn cyflwyno / presents  
**Tai'r Borth / Houses of Borth**  
gan/by Beryl Lewis  
[cyf/ref ADX/1629]

Mae **Tai'r Borth** yn cynnwys dros 350 hanes sy'n ymwneud ag adeiladau unigol ac mae'r hanesion wedi'u darlunio â chyfoeth o ffotograffau, mapiau a dogfennau. Mae'r ffeiliau ar gael ar ein gwefan: <https://www.archifdy-eredigion.org.uk/tairborth.php?lang=cy>

Hoffem ddiolch i Beryl am fod mor garedig â chaniatáu i ni rannu ei gwaith â'r gynulleidfa ehangaf bosibl.

Ceidw Beryl Lewis yr hawlfraint yn ei gwaith ac mae'r hanesion yn cael eu rhannu at ddibenion preifat ac ymchwil yn unig.

**Houses of Borth** consists of over 350 histories of individual buildings, lavishly illustrated with photographs, maps and documents. All the files are available from our website: <https://www.archifdy-eredigion.org.uk/tairborth.php>

We would like to thank Beryl for her kindness in letting us share her work with the widest possible audience.

Beryl Lewis retains the copyright in her work and the histories are made available for private use and research only.



Cyngor Sir  
**CEREDIGION**  
County Council



Archifdy  
Ceredigion  
Archives