

THE BUILDINGS OF MOREFA BORTH

- the Marsh Harbour

Ceredigion



That part of Borth Village on a pebble bank with the sea on one side and the Cors Fochno marsh some reclaimed and the railway on the other. In the distance is the River Dyfi. Photograph Michael Lewis

Photographs and History by BERYL LEWIS

This work is for research and educational purposes only.

WAYSIDE

Wernfach (small marsh)

This is one of a group of three similar houses at the southernmost end of Morfa Borth, with the road to Clarach and the boat park and beach in front of them and the Lôn Glan-y-môr and former Wernfach at the back.



Wayside is a two storey brick house, fitted tightly to its larger neighbour Newlands. It has a gable roof at right angles to the road. Some arrangement would have been made to fit the brick chimney between the houses. The front has square bay windows both upstairs and on the ground floor, both have large modern windows. The upper one has a fine view over the beach suitable for a lounge. Before the wall and boat park were built the ground floor window would have had a fine view too. It is likely that the original front door was in a porch with a slate lean-to roof with red ridge tiles towards the rear of the south side of the house. This has been extended to form a 'vestibule' lit by glass in the modern front door and a large window on the south side. The narrow front garden area is enclosed by a low rendered brick wall with a rough finish. Behind a plain square gatepost is a wooden gate with access to the house. The flaring roof above the lower bay window is a wider version of the much taller roof there when the house was first built. That had to be lowered to enable the large picture window above.



The rear of Wayside has large garage There is also a gate into its yard and to the back door which is up a flight of steps because the site slopes downwards and the houses are taller at the back. The front porch extension continues to the back for a back door. The windows are modern and the walls are rendered. The house was built against the wall of Newhaven next door. That house was there first.

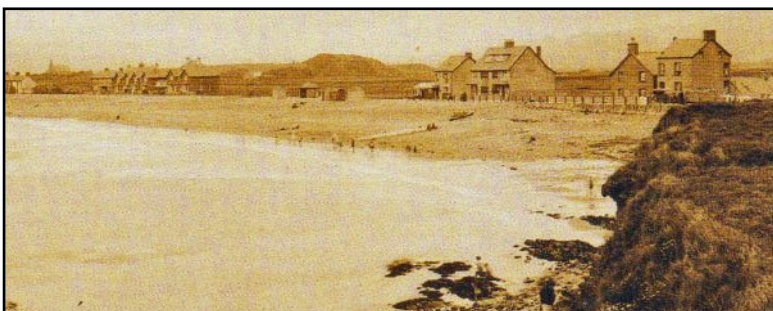
The house was built on a strip of land that was 'beach'. The embankment of stones had been thrown up by the sea, and belonged to the Crown Manor. At that time the Lôn Glan-y-môr (Sea bank Lane) was the only road and it was unfenced. A postcard photograph of 1914 shows the site. On a Crown Manor map surveyed in 1925 it was mostly shown as beach. (National Archives LRRO 1/3060)



This postcard dated 1914 shows the strip of beach. Beach Cottage is already there at the end of it. The Lôn Glan-y-môr is on the far left.

However, after 1925 an embankment was built which enabled our present road to run along the edge of the beach. There is a postcard showing villagers collecting stones from the beach. This made it possible to have buildings on

the strip of land, their fronts opening on to the new road and the beach, and the Lôn Glan-y-môr at their back.



This is dated 1925. Sŵn-y-môr and Newhaven are there, but there is a gap between that house and Beach Cottage. Wayside, Sandiway and Rockside had not yet been built.



On this Valentine's postcard the group of three houses had been built, Rockside had been either left with a brick front, or rendered a dark colour. The other two have white rendered fronts. The postcard was hand coloured and all were given red roofs. The furthest group of four houses to the same design, now Kingswood to Trysor-y-môr were rendered white.

The houses opened directly on to the road and the beach. However they were at the mercy of westerly gales with spring tides, and they regularly flooded. The Council eventually built a sea wall and boat park which protected the houses, but afterwards the family in Craigweil said their house suffered from damp as some of the water draining off the marsh at the back of the house which had previously flowed through the shingle bank below the house to the beach was blocked by the sea wall.



LEFT This postcard is dated August 1930 when the houses were new. The X marks Craig Weil, as the owner Mr Jordan sent the card to his family when he had bought it. Wayside is just beyond the tall Newhaven, and the sloping roofs of the lower bay windows can be seen. The windows were 1930s sash windows (Postcard by

courtesy of Mrs F. H. B. Renny, and above Valentine's Postcard Ceredigion Archives).

Paying the rates in 1934 and still in 1949 for a house and garage called Wayside on the 'new road' in 1934 was E. Elizabeth Hunt. She was the owner and occupier. In 1963 paying the rates was Mrs J. W. Wilkes, and James and Marguerite Wilkes were on the Electoral Register for the house (Electoral Registers and Rates, Ceredigion Archives). In recent times the house was listed when for sale with a vestibule, hall, dining/breakfast room, a lounge with sea views, a modern kitchen, three bedrooms, a bathroom, three lavatories and a garage.

Archifdy Ceredigion Archives
yn cyflwyno / presents
Tai'r Borth / Houses of Borth
gan/by Beryl Lewis
[cyf/ref ADX/1629]

Mae **Tai'r Borth** yn cynnwys dros 350 hanes sy'n ymwneud ag adeiladau unigol ac mae'r hanesion wedi'u darlunio â chyfoeth o ffotograffau, mapiau a dogfennau. Mae'r ffeiliau ar gael ar ein gwefan: <https://www.archifdy-ceredigion.org.uk/tairborth.php?lang=cy>

Hoffem ddiolch i Beryl am fod mor garedig â chaniatáu i ni rannu ei gwaith â'r gynulleidfa ehangaf bosibl.

Ceidw Beryl Lewis yr hawlfraint yn ei gwaith ac mae'r hanesion yn cael eu rhannu at ddibenion preifat ac ymchwil yn unig.

Houses of Borth consists of over 350 histories of individual buildings, lavishly illustrated with photographs, maps and documents. All the files are available from our website: <https://www.archifdy-ceredigion.org.uk/tairborth.php>

We would like to thank Beryl for her kindness in letting us share her work with the widest possible audience.

Beryl Lewis retains the copyright in her work and the histories are made available for private use and research only.



Cyngor Sir
CEREDIGION
County Council



Archifdy
Ceredigion
Archives