

THE BUILDINGS OF MOREFA BORTH

- the Marsh Harbour

Ceredigion



That part of Borth Village on a pebble bank with the sea on one side and the Cors Fochno marsh some reclaimed and the railway on the other. In the distance is the River Dyfi. Photograph Michael Lewis

Photographs and History by BERYL LEWIS

This work is for research and educational purposes only.

SANDIWAY

Wernfach (small marsh) Morfa Borth

This is one of a group of three houses at the southernmost end of Morfa Borth, with the road to Clarach and the boat park and beach in front of them and the Lôn Glan-y-môr (sea bank lane) and former Wernfach (small marsh) at the back. Built in 1928.



Sandiway in 2016. On the right is Rockside.

Sandiway is the central house in a group of three. It is a semi-detached house of brick, of two storeys. The slate coloured roof is hipped with a gabled extension on the front. It shares a red brick chimney with Rockside, each house with two chimney pots. There is a small pointed wooden decoration on the peak of the gable and a line of moulding. The walls are rendered with a pebble dash finish - popular in the 1930s when the house was built. The southernmost window on the ground floor is a square bay window. Before the sea wall and boat park were built there would have been a good view of the beach from this window. Today sea views are from a narrow balcony above and a french window opens on to it. The balcony extends above the front door supported by a slender metal post and is edged with metal and its wooden fence is supported by slender, shaped metal posts. All the windows are modern as is the front door with its glazed panels to light the hall. On the north side of the house is a porch with a hipped roof and the working front door with a rectangular window above it. The narrow front garden area is hard standing and edged by a low stone wall with more pebble dash rendering. The house has a low front wall, but there is no room for a pavement on this narrow site.



LEFT The back of the house is the original brick though the north side of the building is rendered. On the ground floor the kitchen has been extended into the porch with a fully glazed back door. As the house was built on a site sloping downwards the house is taller at the back, and steps are needed from the back door into the yard. This allows room for storage below. Half of the yard is taken up by a garage, and rendered brick walls enclose the rest. There is access to the yard from both the garage and a side gate.

The house was built on a strip of land that was 'beach'. The embankment of stones had been thrown up by the sea, and belonged to the Crown Manor. At that time the Lôn Glan-y-môr was the only road and it was unfenced. On a Crown Manor map surveyed in 1925 the strip was mostly shown as beach, the manor owning eastwards of a line from the edge of the beach

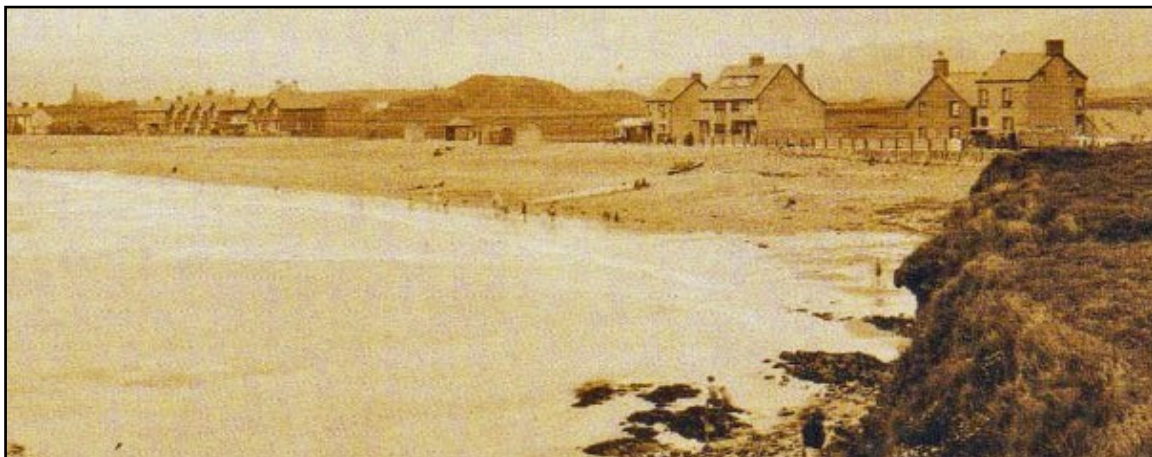
cottages to the corner of the road to Llandre (Map NA LRRO 1/3060)



LEFT This postcard of 1914 shows the strip of beach. Beach Cottage is already there in the distance. On the far left is the Lôn Glan-y-môr. (Both postcards private collection)

BELOW On this early postcard the three houses are not there yet, there is a gap between the

gable fronted beach cottage and the tall pair of houses now Swn-y-mor and Newhaven.



Once the new road to Clarach was built it was possible to have buildings on the strip of land, opening on to the new road to Clarach and the beach in front, and with the Lôn Glan-y-môr at their back. The houses opened directly on to the road and the beach. However they were at the mercy of westerly gales with spring tides, and they regularly flooded.



LEFT On this Valentine's postcard the houses are built - Wayside and Sandiway were white - Rockside has a dark front. The new road to Clarach runs along the front of them all.

(Ceredigion Archives)

The three houses were built by Reginald Guy a former Mayor of Wolverhampton. He had bought the land in 1927 from William Henry Wood, and by October 1928 they were built (Mortgage 4th. October 1928, private collection). He built them to let. Paying the rates for 'new road Sandways' (the Council's spelling of it) in 1934 was Boris Lilian Davies. This was crossed out and L. B. Davies written over the top. They had bought the house. Living there was D. L. Davies. L. B. Davies paid the rates in 1938. (£8).



LEFT This postcard was sent in August 1930 when the three houses, all matching, were new. The front windows with sea views were important and large, with bay windows on the first floor and ground floor. The ground floor bay windows had a sloping roof. Isgaer had not yet been built. Access to the beach was easy (Postcard courtesy of Mrs F H. B. Renny)

In 1949 E. R. Grey paid the rates. The same rate was charged as Rockside's. These houses began by being rented but were eventually bought. There was no name or names on the electoral roll for the house in 1949.



ABOVE The three houses shared a low wall at the front.



LEFT This detail from a film made between 1957 and 1963 shows the front of Wayside next door, and Sandiway also had a similar upper bay window and small paned windows in wooden frames. Geometrical patterns were popular in the late 1920s and 1930s (Courtesy of Alan Cash)

In 1957 and 1963 Lawrence Cash paid the rates and the spelling of the house in the list was 'Sandiway'. On the electoral roll in 1963 were Lawrence and Katherine Margaret Cash. They were from the midlands and used the house as a holiday home. (Electoral Registers and Rates Ceredigion Archives). Sandiway then had a bread oven, now removed.

BELOW Lawrence Cash's Sandiway, with possibly its original windows. Today the prominent roof above the lower bay window and the triangular window have gone (Photograph courtesy of Alan Cash)





ABOVE In the foreground near the camera is another view of the front of Lawrence Cash's Sandiway. The bay window has interesting recessed lower panes. A transparent screen on the low wall protected the front garden area from the north wind.



ABOVE This glimpse of the pair of houses shows the bricks which they were built. The diamond shape small window on the upper floor of Sandiway on the left was a bedroom at the time this photograph was taken.

(Photograph courtesy of Alan Cash)

BELOW This is the rear of Wayside next door in 1965 which had similar small paned windows as in the front of the house and Sandiway had these too. The upper floor windows were casements, one is open, and the lower window a canted bay window. Sandiway still has this bay window, but with modern glass (Photograph courtesy of Alan Cash)



Archifdy Ceredigion Archives
yn cyflwyno / presents
Tai'r Borth / Houses of Borth
gan/by Beryl Lewis
[cyf/ref ADX/1629]

Mae **Tai'r Borth** yn cynnwys dros 350 hanes sy'n ymwneud ag adeiladau unigol ac mae'r hanesion wedi'u darlunio â chyfoeth o ffotograffau, mapiau a dogfennau. Mae'r ffeiliau ar gael ar ein gwefan: <https://www.archifdy-eredigion.org.uk/tairborth.php?lang=cy>

Hoffem ddiolch i Beryl am fod mor garedig â chaniatáu i ni rannu ei gwaith â'r gynulleidfa ehangaf bosibl.

Ceidw Beryl Lewis yr hawlfraint yn ei gwaith ac mae'r hanesion yn cael eu rhannu at ddibenion preifat ac ymchwil yn unig.

Houses of Borth consists of over 350 histories of individual buildings, lavishly illustrated with photographs, maps and documents. All the files are available from our website: <https://www.archifdy-eredigion.org.uk/tairborth.php>

We would like to thank Beryl for her kindness in letting us share her work with the widest possible audience.

Beryl Lewis retains the copyright in her work and the histories are made available for private use and research only.



Cyngor Sir
CEREDIGION
County Council



Archifdy
Ceredigion
Archives