

THE BUILDINGS OF MOREFA BORTH

- the Marsh Harbour

Ceredigion



That part of Borth Village on a pebble bank with the sea on one side and the Cors Fochno marsh some reclaimed and the railway on the other. In the distance is the River Dyfi. Photograph Michael Lewis

Photographs and History by BERYL LEWIS

This work is for research and educational purposes only.

ROCKSIDE

Wernfach (small marsh) Morfa Borth

This is the southernmost of a group of three similar houses at the south end of Morfa Borth, in front of them is the road to Clarach and the end of the wall of the boat park and the beach. At the back is the Lôn Glan-y-môr (Sea bank Lane) and former Wernfach (small marsh). They were built after 1925 and by 1930.



Rockside is on the right in this photograph taken in 2016.

Rockside is one of a pair of semi-detached brick houses with a slate coloured hipped roof with red ridge tiles. Prominent at the front is the gable. The house shares a brick chimney with Sandiway, and each have two chimney pots. The walls are rendered with a pebble dash finish very popular in the later 1920s and 1930s when the house was built. On the north side of the front upstairs is a square bay window, and on the ground floor a bigger bay window with a sloping and curved hipped roof probably original. There would be a good view of the beach and Cardigan Bay. All the windows are modern. The front door is at the side of the house in front of a porch shaped extension with a hipped slate roof. This is quite deep and reaches the back wall of the house. It has a circular window like a ship's porthole facing the road. The front garden is enclosed by a low wall topped with slate and rendered. Access is through a wooden gate and along a paved walkway to the front door. The gate opens on to the road to Clarach and there is no pavement. It is likely that this house has three bedrooms, a bathroom, toilet, a lounge, and a kitchen/breakfast room.



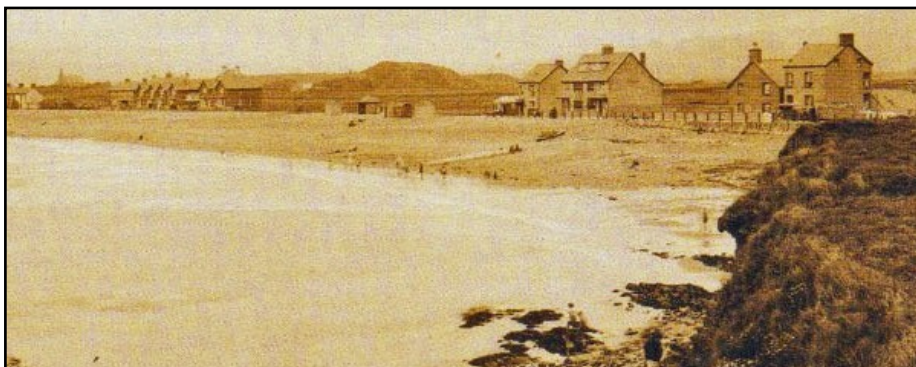
LEFT The rear of the house is the same as that of Sandiway, though it has a rendered wall. The kitchen extends into the porch area, allowing a wide window. The garden extends to the Lôn Glan-y-môr and there it has a little more space than the houses nearer the Nisa. There is room for a garden and a parking space.

The house was built on a strip of land that was an embankment of stones thrown up

by the sea, and belonged to the Crown Manor. At that time the Lôn Glan-y-môr was the only road and it was unfenced.



LEFT This is from a postcard dated 1914 and shows the strip of beach. The Lôn Glan-y-môr is on the far left. On a Crown Manor map surveyed in 1929 it was still beach, the manor owned it. (Map National Archives LRRO 1/3060)



LEFT On this postcard of 1925 Rockside, Wayside and Sandiway were not built yet (Postcard Private Collection).



ABOVE On this Valentine's postcard we can see the 'new road' to Clarach along the edge of the beach. The three houses are built, Wayside and Sandiway have been rendered white. Rockside has a dark front but a white rendered side. This postcard has given them all very red roofs!



ABOVE This postcard was sent in August 1930 when the houses were new. Rockside, Sandiway and Wayside had the kind of ground floor bay windows with sloping roofs like Kingswood, Craigweil and Trysor-y-môr nearest the camera. We can just see little roofs over the Rockside group's front doors too. The 1930s windows with little panes of glass were actually sash windows.

The postcards show how the houses were at the mercy of westerly gales with spring tides, and they regularly flooded. The Council eventually built a sea wall and boat park which protected them, but afterwards the family in Craigweil said their house suffered from damp as some of the water draining off the marsh at the back of the house which had previously flowed through the shingle bank below the house to the beach was blocked by the sea wall.

Paying the rates for Rockside in 1934 and 1938 was Rachel Williams. She was the owner and occupier of the house on the 'new road' and it had its name Rockside. In 1949 paying the rates was Dr W. Williams. On the electoral roll for the house was Elizabeth Gurney and William Macaulay – possibly tenants.

Rockside Page 4

Paying the rates in 1963 was Guy Francis Pearson. He paid the same amount of £44 as Sandiway and Wayside. He and his wife Sylvia June Pearson were on the electoral roll and were probably living there (Electoral Registers and Rates Ceredigion Archives).

Archifdy Ceredigion Archives
yn cyflwyno / presents
Tai'r Borth / Houses of Borth
gan/by Beryl Lewis
[cyf/ref ADX/1629]

Mae **Tai'r Borth** yn cynnwys dros 350 hanes sy'n ymwneud ag adeiladau unigol ac mae'r hanesion wedi'u darlunio â chyfoeth o ffotograffau, mapiau a dogfennau. Mae'r ffeiliau ar gael ar ein gwefan: <https://www.archifdy-ceredigion.org.uk/tairborth.php?lang=cy>

Hoffem ddiolch i Beryl am fod mor garedig â chaniatáu i ni rannu ei gwaith â'r gynulleidfa ehangaf bosibl.

Ceidw Beryl Lewis yr hawlfraint yn ei gwaith ac mae'r hanesion yn cael eu rhannu at ddibenion preifat ac ymchwil yn unig.

Houses of Borth consists of over 350 histories of individual buildings, lavishly illustrated with photographs, maps and documents. All the files are available from our website: <https://www.archifdy-ceredigion.org.uk/tairborth.php>

We would like to thank Beryl for her kindness in letting us share her work with the widest possible audience.

Beryl Lewis retains the copyright in her work and the histories are made available for private use and research only.



Cyngor Sir
CEREDIGION
County Council



Archifdy
Ceredigion
Archives