

# THE BUILDINGS OF MOREFA BORTH

- the Marsh Harbour

Ceredigion



That part of Borth Village on a pebble bank with the sea on one side and the Cors Fochno marsh some reclaimed and the railway on the other. In the distance is the River Dyfi. Photograph Michael Lewis

Photographs and History by BERYL LEWIS

*This work is for research and educational purposes only.*

## THE ORANGE TREE Morfa Borth

This is a cottage on the beach side at the southern part of Borth High Street. Formerly one of the London Place cottages named after London House across the road. Home of mariner Captain David Daniel and his family until 1910. Later called Sheerbrooke. An Orange Tree Café in 1951.



*The Orange Tree in 2009.*

The Orange Tree is double fronted, and has a gable roof with a deep pitch parallel to the road. The pitch suggests it may have been heightened if it began as one of Borth's oldest cottages. The two large dormer windows in the front roof light an upper floor. All the

windows and the door are modern.

The walls are rendered in a rough cast. On the south side there is a passage to the rear, on the north side the cottage butts up against Leander. The front door opens directly on to hard standing and the road.



The rear of the cottage has a low pitch roof with three small rectangular windows for its upper floor. Below is a wide extension on the south side with a very low pitch roof. This acts as a verandah, lit with glass windows, and it has a back door into the yard. There is a similar extension, though not as deep on the

north side, and this too has a continuation of the low pitch roof. Altogether these make the building deeper than it was on the 1888 and 1905 maps, and the appearance of the back is very modern. In the yard is a platform with a fine view out to sea. The yard ends at the beach with the Council's defensive sea wall of vertical planks, with a gateway with steps down to the beach, and the gate is very solid, also of vertical planks.

The walls are smoothly rendered.

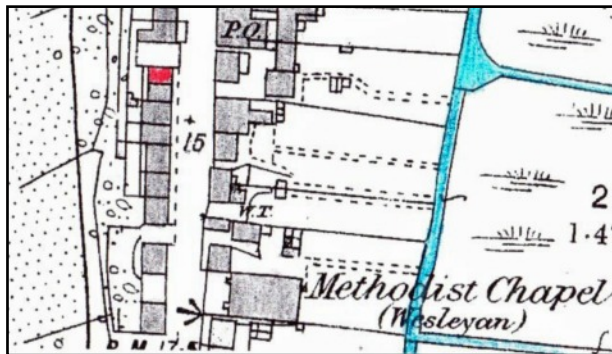
At present it is not possible to find the occupants of the cottage in the early Census's. In the cottage at the 1871 Census was Captain David Daniel aged 32, baptised 5th May 1839 at the church at Llandre. He was the son of a mariner, David Daniel and his wife Elizabeth and the family were already in Morfa Borth in 1841 with homes on the other side of the road - north of this site. Also in the cottage was his wife Mary, aged 30 and born in Borth about 1841, and daughters; Catherine 5, Emma 4, Margaretta 1, and a lodger Rosina Daniel 13, daughter of master mariner David Daniel and his wife Elizabeth and baptised on March 7<sup>th</sup> 1857. The family owned and had shares in ships, and Rosina, a 91 ton schooner, was one of them. (Register of Shipping Aberystwyth, Ceredigion Archives).

In the 1881 Census Mary the Captain's wife was at home and there were two more children, Mary 3, and a son David Thomas Daniel 7. The cottage had the address 'London Place' in 1891, and the Daniel's daughter Mary then aged 13 was there.

In the 1891 Census in the cottage was Mary Daniels now 62, and her son Thomas aged 27 had gone to sea like his father and was an able seaman.

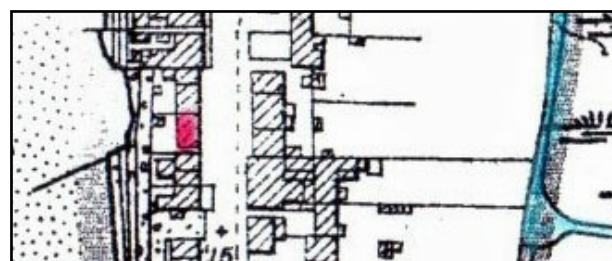
In 1910 for a tax, planned but not levied, the cottage was valued at £42. There would have been £2 to pay and £2.10s gross. That is the typical value of one of Borth's quite good quality rubble stone cottages. Mary Daniel had died, and her executors owned the cottage. It was empty.

In 1925 the cottage had a new name, Sheerbrooke, and paying the rates was the owner Lewis Rees. He had a tenant, David Jenkins.



*In 1886 the cottage, Captain David Daniel's home, is marked in red, it had its own backyard, and the small building there was probably its Ty Bach (outside lavatory). The front door opened directly on to the street. It was slightly larger than Leander next door. At the back there was some kind of fence to defend it against the sea. (Detail from the 25 inch Ordnance Survey Map, surveyed in 1886 and published in 1888. Cardiganshire III.10)*

By 1934 the cottage had another name, 'Orange Tree House', and paying the rates was Lilian Cross.



*BELOW In 1904 there was no change to the cottage. The fence to defend it against the sea was very feeble compared with the many fences of some of its neighbours - each house owner was responsible for his own fence or fences. Often these were brushwood bundles at an angle and anchored into the bank of stones. (Detail from the 25 inch Ordnance Survey Map, revised in 1904 and published in 1905. Cardiganshire III.10)*

*The Orange Tree Page 3*

By 1938 Miss Dutton and Miss Scudamore were paying the rates.

In 1949 Mollie Dutton paid the rates and it had become a little café. In 1951 it advertised itself as 'The Orange Tree, proprietor Mollie Dutton (Borth Review National Library of Wales). In the 1960s it advertised 'home made cakes and preserves' (Handbook and Guide to Borth). In 1963 Nellie Dutton paid the rates for a 'house, café and premises', and Mollie Dutton had a vote for the house. (Rates and Electoral Registers, Ceredigion Archives). We can imagine the customers given their tea and cakes perhaps with a view of the beach. The Dutton family member who first came to Morfa Borth was George Dutton in 1863, a platelayer for the railway, who lived at Chester House now part of the Victoria Inn.



*We can see The Orange Tree when it was an old cottage. Reading from the left; London Cottage, Auburn, Ty Bijou and then The Orange Tree, and next door Leander. These were called the 'London Cottages' and London House (and shop) is the big building on the right. The photograph was taken when the road was being dug up - possibly to lay a pipe.*

*Postcard courtesy of the Amgueddfa Ceredigion Museum.*

Archifdy Ceredigion Archives  
yn cyflwyno / presents  
**Tai'r Borth / Houses of Borth**  
gan/by Beryl Lewis  
[cyf/ref ADX/1629]

Mae **Tai'r Borth** yn cynnwys dros 350 hanes sy'n ymwneud ag adeiladau unigol ac mae'r hanesion wedi'u darlunio â chyfoeth o ffotograffau, mapiau a dogfennau. Mae'r ffeiliau ar gael ar ein gwefan: <https://www.archifdy-ceredigion.org.uk/tairborth.php?lang=cy>

Hoffem ddiolch i Beryl am fod mor garedig â chaniatáu i ni rannu ei gwaith â'r gynulleidfa ehangaf bosibl.

Ceidw Beryl Lewis yr hawlfraint yn ei gwaith ac mae'r hanesion yn cael eu rhannu at ddibenion preifat ac ymchwil yn unig.

**Houses of Borth** consists of over 350 histories of individual buildings, lavishly illustrated with photographs, maps and documents. All the files are available from our website: <https://www.archifdy-ceredigion.org.uk/tairborth.php>

We would like to thank Beryl for her kindness in letting us share her work with the widest possible audience.

Beryl Lewis retains the copyright in her work and the histories are made available for private use and research only.



Cyngor Sir  
**CEREDIGION**  
County Council



Archifdy  
Ceredigion  
Archives