

THE BUILDINGS OF MOREFA BORTH

- the Marsh Harbour

Ceredigion



That part of Borth Village on a pebble bank with the sea on one side and the Cors Fochno marsh some reclaimed and the railway on the other. In the distance is the River Dyfi. Photograph Michael Lewis

Photographs and History by BERYL LEWIS

This work is for research and educational purposes only.

THE NISA SUPERMARKET

Wernfach – the small marsh.

On the junction of the High Street with the roads to Llandre and Clarach. It replaced earlier shops, the Canteen Stores and a SPAR, and opened for business in March 2006. The architects were Lionel Curtis and Rory Williams R.I.B.A. for Mr and Mrs Derek Edwards.



ABOVE The front of the building in 2016. On the ground floor is the supermarket and above is the seating area and balcony of the 'Boulders Cafe'. The circular section has a transparent roof, areas of glass windows and french windows open on to the balcony. There is plenty of space and light and panoramic views.

BELOW The north face of the building has a shaped roof and the main section of the wall is faced with slate. On this side of the building is a red signboard with the names of the architects.





ABOVE The rear of the building in 2016. The roof extends to protect a balcony accessed by a metal staircase. There is a door leading from the balcony into the building. On the left the curve of the top continues to the ground, and all these walls are rendered. Not only does the top and back of the building contain the kitchen and cloakroom at the rear of the cafe seating area, but it also has room for the storage of goods needed by the supermarket, and a staff entrance door, but also facilities for the staff. The grassed area in the foreground is part of the Wernfach (small marsh) now drained and usually free from floods.

BELOW A loading platform for goods from large trucks is on the other side of the building with the road to Llandre running alongside. A ramp is used to take them to the upper floor. There is also very handsome nameplate lettered on to a block of smooth slate, and let into the slate wall. The building is a very exciting modern design





ABOVE LEFT A detail of the slate work and nameplate in 2016. At the very top of the photograph is the end of one of the metal girders used to support the overhanging roof.

ABOVE RIGHT The footing of the rendered sections of the building is dark brick.



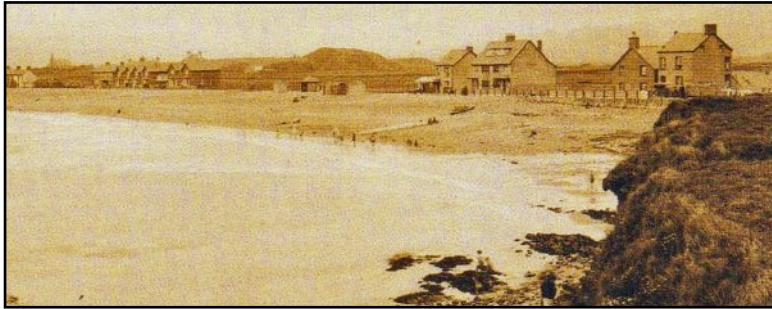
ABOVE LEFT A detail of the north wall - part of the curved front of the building.

ABOVE RIGHT Metal work supports the balcony and its railings are metal too. The frames of the windows have a plastic finish.

BOTTOM LEFT The west wall is also faced with slates.

The roadside ground on which this was built had nothing drawn on it on a map surveyed on October 18th and December 3rd 1925. It was still marked as the 'waste' of the Crown Manor who owned it as it was not suitable for farming. The ground when enclosed could be purchased from the Crown. (Map National Archives LRRO 1/3060)

Previously in October 1924 a wooden shop had been built called the 'Canteen' somewhere in Upper Borth near the Castle Stores. J. Morgan Hughes and Miss L. M. Hughes from there sang a duet at an Eisteddfod at the Babell Calvinistic Methodist Chapel in Dolybont. In 1925 Richard Hughes and J. Morgan Hughes paid rates on their 'wooden shop'. But the rates list added that by 1927 their shop had become more valuable, £4 gross and £2.10s to pay had

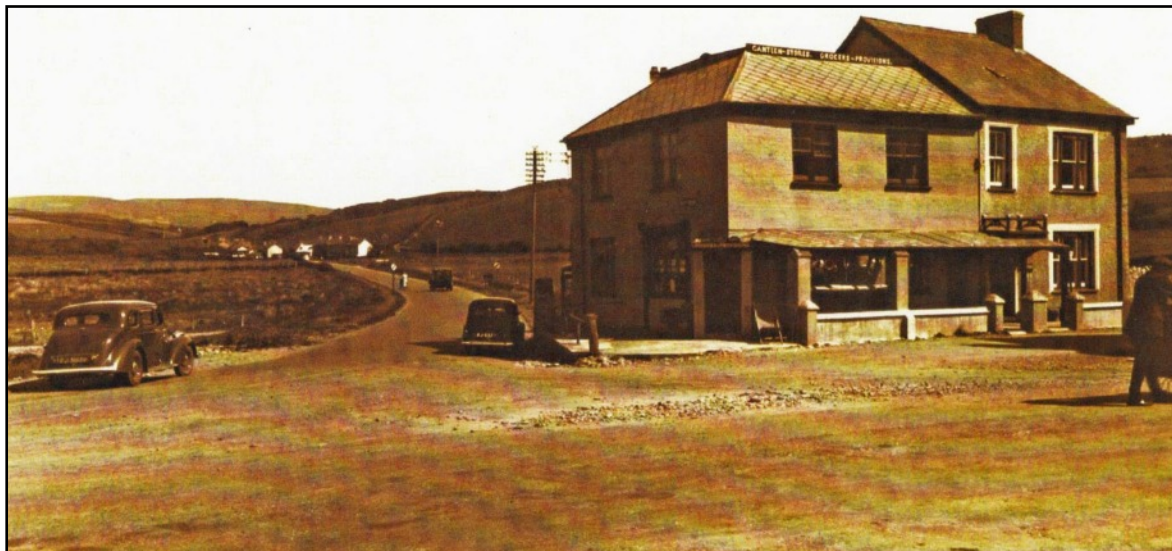


On this detail from a postcard of about 1925, a 'General View of Borth' on the far left is the house end of the building with its chimney - see the photograph below. There was a single storey building alongside (Postcard private collection).

become £5 gross and £3 to pay. I think it had moved to the present roadside site. In 1926 in a Directory of South Wales it had rooms to let and ground for camping. As the 'Hughes Brothers' of the Canteen Stores in a Guide to Borth they advertised groceries and provisions, a public bathing hut and deck chairs to hire, a camp site, and ices, refreshments, teas, coffee and minerals. (Aberystwyth Public Library). In 1934 Richard Hughes paid the rates not only

for the 'Canteen Stores', but the rate included a bungalow and garage. He paid £8, £14 gross, and in August 1935 the rate was increased twice to £10 then £12 to pay, £16 and £20 gross. This is the same rate as the house called Anwylan on the beach side of the High Street, so a substantial building now existed on the corner, possibly the one in the photograph on the postcard of 'Borth, Glanywern' of about 1938. In 1938 Richard Hughes also paid rates of £12. The postcard shows a two storey shop alongside the house in the 1925 photograph. They shared the low wall with square posts with pyramidal tops which also ran outside the seafront side of the shop which indicates that the same person owned both. Along the ridge of the hipped roof of the shop the sign said CANTEEN STORES, PROVISIONS. GROCERIES.

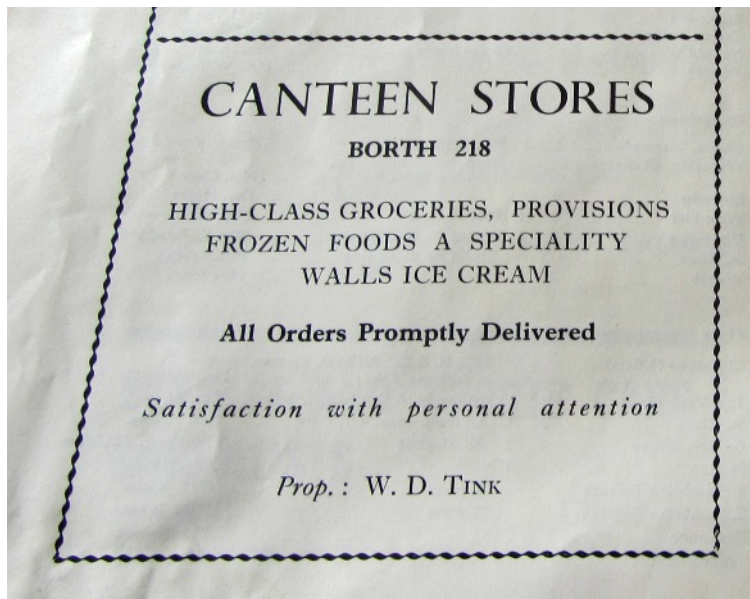
The Canteen Stores from a postcard dated 1938.



Slates or tiles were arranged in a diamond pattern on this roof. A lean to roof along the seafront side protected a walkway and a shop window. Gateposts at a gap in the low wall led to the shop entrance. A similar gap led into the house alongside. This was not a flat site, stones supported an area of hard standing enclosed by posts and chains alongside the north roadside of the shop. There seems to be another larger shop window on that side.

In 1949 there was a new owner, N. Myfanwy Tink paid the rates, again £12. In an advertisement in the Borth Review the place had a telephone, Borth 23. (National Library of Wales)

About 1950 W, D, Tink sold the groceries and provisions, and Mrs D. Jones advertised a 'Canteen Flat' to let with one bedroom and one sitting room. (Borth Guide Book, Aberystwyth Library). In 1962 frozen foods and Walls Ice Cream were added to the 'High Class Groceries'. (Borth Guide Book, private collection).



LEFT This advertisement was put by Mr Tink into a 'Borth, Ceredigion' guide, 1s.6d. of 1962 (private collection).

In 1963 Myfanwy Tink paid the rates for a 'shop and premises'. There was £62 to pay so the Canteen Stores was doing well. In the Electoral Register no-one had a vote for the shop but with votes for the Canteen Flat were John Morgan Jones and Doreen N. Jones. Sometime after 1968 there was fruit sold there, and it had become a Sub-Post Office.

BELOW In 1994 the shop was a SPAR. Photograph by A. L Cash at the May Bank Holiday.



Mr and Mrs Tink retired and the shop was enlarged when the sea facing verandah was filled in, and there was an additional alteration on the main road side and a lean-to extension was put on the back.

Panteg next door had a porch and a dormer window.

When cardboard boxes at the rear of the SPAR caught fire, there was serious damage to the shop and the damage spread to Panteg next door. Panteg happened to be for Sale, and both



were able to be bought, demolished and the Nisa supermarket was built on the site.

LEFT This detail from a modern 25 inch map shows how the building fits its site to allow plenty of room for the shop floor (Detail from a Council Crown 25 inch Map courtesy of Councillor Ray Quant when assisting research for a local event - and two copies had to overlap hence the line across the picture)

The site was just inland from the pebble embankment and was marshy soft ground. 76 piles were needed each eighteen feet long to support the building. The Nisa opened in March 2006 and contains a post office.

In 1910 Mr and Mrs Derek Edwards of the Nisa had a South Wales 'Building Excellence Award' in the category of 'small commercial' buildings. The business has also won two awards.

There has only been slight cracking of the loading bay floor at the rear, easily mended, otherwise it has not moved.

The former Canteen Stores gave its name to a 'Canteen Corner' – still called that in a 2014 re-development scheme.

The author would like to thank the present family owning the Nisa for their help.

Archifdy Ceredigion Archives
yn cyflwyno / presents
Tai'r Borth / Houses of Borth
gan/by Beryl Lewis
[cyf/ref ADX/1629]

Mae **Tai'r Borth** yn cynnwys dros 350 hanes sy'n ymwneud ag adeiladau unigol ac mae'r hanesion wedi'u darlunio â chyfoeth o ffotograffau, mapiau a dogfennau. Mae'r ffeiliau ar gael ar ein gwefan: <https://www.archifdy-eredigion.org.uk/tairborth.php?lang=cy>

Hoffem ddiolch i Beryl am fod mor garedig â chaniatáu i ni rannu ei gwaith â'r gynulleidfa ehangaf bosibl.

Ceidw Beryl Lewis yr hawlfraint yn ei gwaith ac mae'r hanesion yn cael eu rhannu at ddibenion preifat ac ymchwil yn unig.

Houses of Borth consists of over 350 histories of individual buildings, lavishly illustrated with photographs, maps and documents. All the files are available from our website: <https://www.archifdy-eredigion.org.uk/tairborth.php>

We would like to thank Beryl for her kindness in letting us share her work with the widest possible audience.

Beryl Lewis retains the copyright in her work and the histories are made available for private use and research only.



Cyngor Sir
CEREDIGION
County Council



Archifdy
Ceredigion
Archives