

# THE BUILDINGS OF MOREFA BORTH

- the Marsh Harbour

Ceredigion



That part of Borth Village on a pebble bank with the sea on one side and the Cors Fochno marsh some reclaimed and the railway on the other. In the distance is the River Dyfi. Photograph Michael Lewis

Photographs and History by BERYL LEWIS

*This work is for research and educational purposes only.*

# MUNDING

## Morfa Borth - the Marsh Harbour

Built after 1904 but before 1910.



*Munding in 2015.*

Munding, on the east side of the High Street is semi-detached but joined to Dinorwic on the south, and of the same design suggesting they were built at the same time. The house is under a gable roof parallel to the street. The house then extends a long way back filling its ground completely.

This is a two storey house, but wide dormer windows allow for a second floor with a large bedroom lit by a dormer window in the front, and a smaller bedroom lit by a dormer window at the rear. These appear to have a flat or nearly flat roof. The walls at this date of building are probably brick. Some care was taken with the detail on this house. The roof is edged with a pattern of dentils - brick - space-brick space etc. The rendering has quoins edging the front, and the windows have decorative frame and



a prominent keystone. On the first floor above the front door is the frame of a window in the rendering which may have been blocked. The front door has pilasters either side, with a simple capital of two horizontal lines, topped by mock brackets carrying a prominent decorative moulding. Above the front door is a window to light the hall. The windows are modern. On the northern end of the roof is a red brick chimney. Access to the house is on the north side of it. There is a narrow front garden with a low wall carrying decorative railings.

*LEFT Munding is the northernmost of a terrace of three houses with Dinorwic and Elidir.*





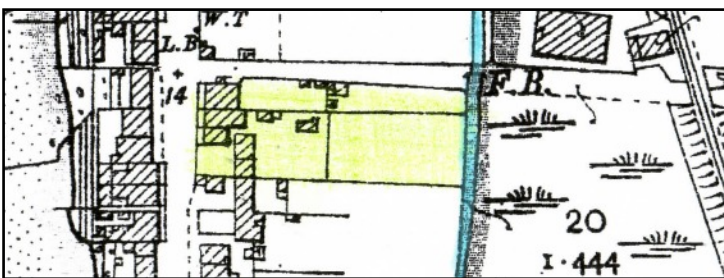
*LEFT The front doors are identical, and a glimpse of the handsome railings and gate in front of Munding.*

The rear of the house has a substantial extension the full width of the house and three storeys high. Then it has a two storey section and finally a long section of one storey. By 2008 the two storey section which is modern contained a workshop with block cavity walls under a flat roof laid with mineral felt painted with solar reflection paint. The back garden is very long and narrow, grassy, and extends to some shrubs and the ditch, the old brook. There is access to the rear for a car, and a place to park.

The ground for this house was enclosed in 1823 by a weaver Lewis Lewis, from the pebble embankment thrown up by the sea, and called 'waste' because it was no use

for farming. His ground measured one rod, about a quarter of an acre, and extended to a brook. On a map of 1829 it is shown with a terrace of cottages built on it set back from the street. A rent of £2.6s had to be paid every year to the Crown manor who owned the ground. Opposite across the street was the beach (Map National Archives LRRO 1/3060). The road was centuries old being a quick way to North Wales via a ferry to Aberdovey. It was a turnpike road by the 1770s.

In 1848 the Tithe Apportionments Map listed 'houses and gardens' on this site - number 35. There were three of these, Lewis Lewis had the centre one. The ground on which Munding will be built was empty. On the 25 inch map of 1888 surveyed in 1886 the Lewis Lewis ground extended to the road, and there were three new houses built beside the street. The ground on which Munding would be built was still empty.

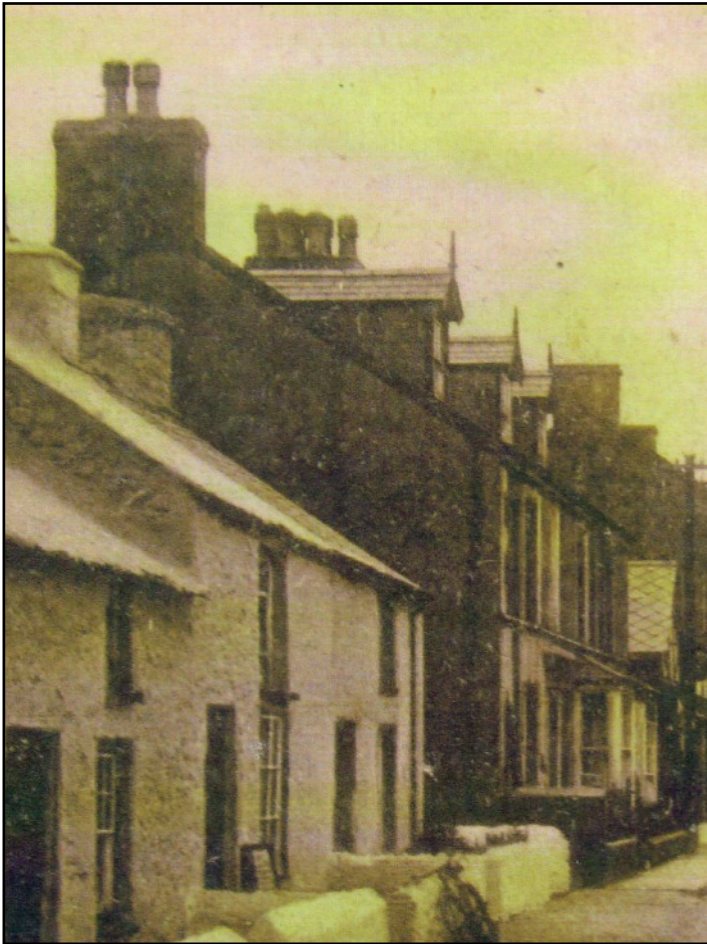


*LEFT On the map of 1905 surveyed in 1904 the ground on which Munding will be built was still empty. Marked in yellow is the land that had belonged to Lewis Lewis the weaver. Munding will be built in the empty square beside the street in the bottom left hand corner of the Lewis family*

*ground. Old cottages were still at the rear.*

By 1910 both Munding House and Dinorwic were built and for a valuation for a tax planned but not levied Munding was valued at £357 - more than Dinorwic at £291. There would have been £6.16s to pay, £8 gross. The owner was Anne Jones who was also the occupier. (Ceredigion Archives and map, National Library of Wales). The house was not mentioned in the 1911 Census.

Paying the Rates for the house in 1925 was David Lloyd and the occupiers were Ben James and Margaret Davies.



*LEFT This is an early photograph of the three houses. All have dormer windows topped by decorative finials. The chimneys had room for four flues. The north wall of Munding looks rough and possibly was brick but the front wall had rendering on the ground floor. The line of moulding running across all three houses below the upper windows was there. The front door appears to have a small roof over it (Detail from a postcard 'High Street Borth' courtesy of Peter Fleming).*

In August 1934 Mrs Jones of Munding provided a recipe for a St Matthew's Church recipe book. (Cambrian News, Ceredigion Archives)

With a vote for the house in 1945 were John Myrddin Jeremy, Gwendoline Jeremy and William Morgan.

Mr Jeremy was paying the rates in 1949.

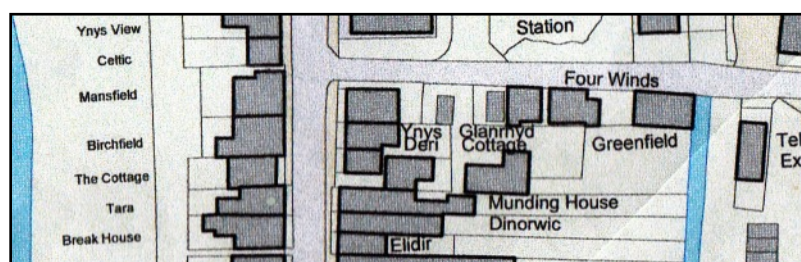
There are details of the house in 1954 when Munding House was up for sale. It was freehold. On the ground floor were an entrance hall, two reception rooms, a kitchen, scullery, lavatory and coal house. There were two bedrooms on the first floor and a bathroom and lavatory. On the second floor were two more bedrooms. Outside was a yard and garden and a garage with a back entrance well built of stone with cement facing and a tiled roof. It was in very good condition (Cambrian News cutting, Ceredigion Archives ABY/B/16).

Jenny Davies paid the rates in 1957 and in 1963 when she had a vote for the house (Electoral Registers and Rates, Ceredigion Archives).

In the late 1960s in a Handbook and Guide to Borth Mrs J. Davies was offering furnished accommodation there of two bedrooms (Private Collection).

In 1975 the garage was at the rear. Access was along a track marked from the lane to Brynlllys (Historic Maps Online).

BELOW Today Munding House has a narrow garden all the way to the old ditch and the house extends all the way to the garage and has a tiny yard on the north side of it (Council Map courtesy of Councillor Ray Quant who provided it for research for a village event).







*ABOVE The rear of the three houses seen from the garden of Dinorwic in the centre of the drawing. All had extensions at the rear, Munding on the right has a three storey extension that was the width of the house. The sloping roofed extensions on the other two would have had chimneys for a kitchen below, and it is likely that Munding too had one of these, since rebuilt. Captain Thomas Williams was the builder of Dinorwic and Elidir. We do not know if he built Munding as well.*

Archifdy Ceredigion Archives  
yn cyflwyno / presents  
**Tai'r Borth / Houses of Borth**  
gan/by Beryl Lewis  
[cyf/ref ADX/1629]

Mae **Tai'r Borth** yn cynnwys dros 350 hanes sy'n ymwneud ag adeiladau unigol ac mae'r hanesion wedi'u darlunio â chyfoeth o ffotograffau, mapiau a dogfennau. Mae'r ffeiliau ar gael ar ein gwefan: <https://www.archifdy-eredigion.org.uk/tairborth.php?lang=cy>

Hoffem ddiolch i Beryl am fod mor garedig â chaniatáu i ni rannu ei gwaith â'r gynulleidfa ehangaf bosibl.

Ceidw Beryl Lewis yr hawlfraint yn ei gwaith ac mae'r hanesion yn cael eu rhannu at ddibenion preifat ac ymchwil yn unig.

**Houses of Borth** consists of over 350 histories of individual buildings, lavishly illustrated with photographs, maps and documents. All the files are available from our website: <https://www.archifdy-eredigion.org.uk/tairborth.php>

We would like to thank Beryl for her kindness in letting us share her work with the widest possible audience.

Beryl Lewis retains the copyright in her work and the histories are made available for private use and research only.



Cyngor Sir  
**CEREDIGION**  
County Council



Archifdy  
Ceredigion  
Archives