

THE BUILDINGS OF MOREFA BORTH

- the Marsh Harbour

Ceredigion



That part of Borth Village on a pebble bank with the sea on one side and the Cors Fochno marsh some reclaimed and the railway on the other. In the distance is the River Dyfi. Photograph Michael Lewis

Photographs and History by BERYL LEWIS

This work is for research and educational purposes only.

MOORLANDS

Morfa Borth (the Marsh Harbour)

At the northern end of the village with the beach over the road. This house was built on part of two acres of land enclosed in 1824 by Captain Thomas Jones who built a cottage on it (Hopewell). Moorlands was built in 1935 in the Art Deco style by the architect Ronald Franks for his client H. Melen Fisher. Like Brockhill it was designed as a holiday home.



ABOVE The house in 2015.

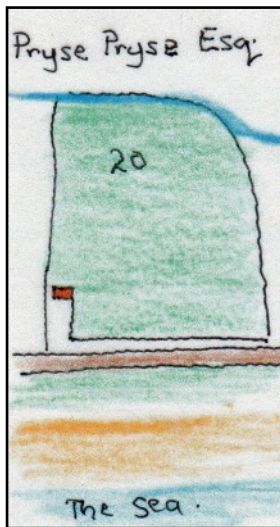


Unlike Brockhill which has a generously large site, this house almost fills its plot, with room to access the garden at the rear on the north side. Today the south wall of the house is on the boundary of the plot.

LEFT The north side in 2015.

Mr Franks was well known for the 'White House' at Holland on Sea Essex, (originally called Biana). Flat roofed homes were popular at seaside resorts in the 1930s. There is a chimney on the north side of the roof. This is a two storey house with a basement, and as at Brockhill, a garage is built into the house, at Moorlands it is entered from the front. The shape of the house is a

cube with a curving extension on the ground floor at the front. A window in five sections runs round this. The windows will originally have had metal frames in a geometrical pattern, as Brockhill did. When this house was built there would have been a view of the sea from the ground floor. This was lost when the concrete sea defensive wall and promenade was built about 1960. However Moorlands has a balcony - probably with its original metal railings - with a fine view of the sea from the room on the upper floor whose door leads out on to it. The walls of Moorland are built of concrete reinforced with iron. The front door is up some steps as the basement is below. The wall enclosing the front today is very simple but there are signs of infilling at the top. On the north side of the house is a back door, and as at Brockhill there is very interesting spacing of various sizes of window on this wall. The rear garden has a narrow access into a plot of ground leading to the ditch and railway line.

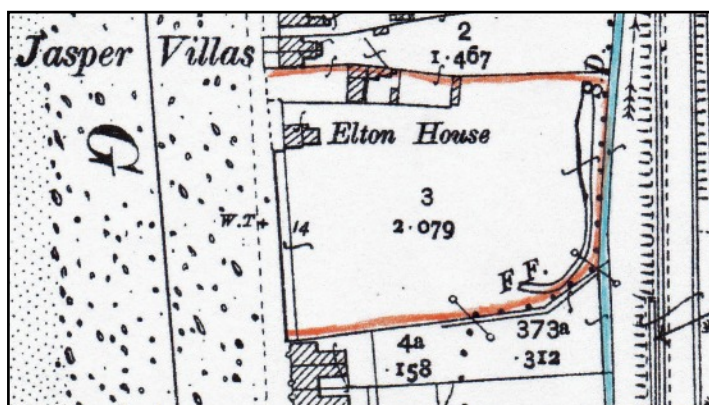


The ground on part of which Moorlands stands was two acres enclosed in 1824 by Captain Thomas Jones. Part was the embankment of stones built up by the sea, and part was reclaimed marsh. It was called 'waste' by the Crown Manor who owned it, and the Captain could pay a rent for it, or buy it for two years rent.

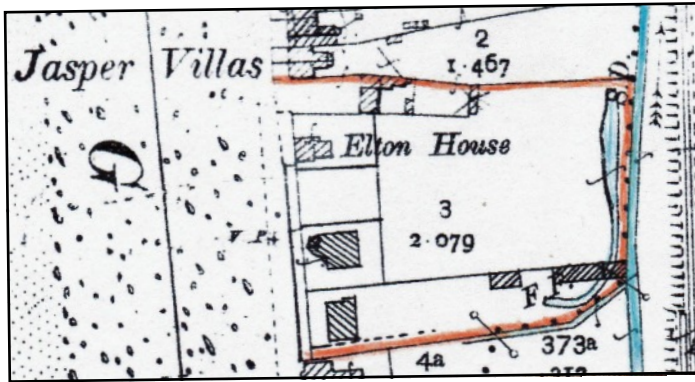
LEFT On a Crown Manor Map of 1829 the ground was Number 20 and extended to a brook - now a dry ditch. The cottage set back from the road was Hopewell, named after a sloop many shares of which were owned by Captain Jones, and sailed by him and his son.

The road was centuries old and was a turnpike road by the 1770s. It led to a ferry from Ynyslas to Aberdovey and was a quick way to North Wales. The brook supplied the cottages with fresh water, the out flow from the Glan Lerry Corn Mill plus some little streams, and for fuel the cottagers had an area of peat near Ynys Fergi. However

by 1935 Moorlands had its own water supply and possibly electricity too. The Siloh Chapel had it by 1932, Borth St Matthew's Church, the Vicarage and the National School by 1934, the railway station by 1936 (*Advertisement by A.W. Miller E.C.A. of Aberystwyth in a Recipe Book in aid of Borth's St Matthew's Church .and the Coastlines of the Cambrian Railways, C. C. Green*)



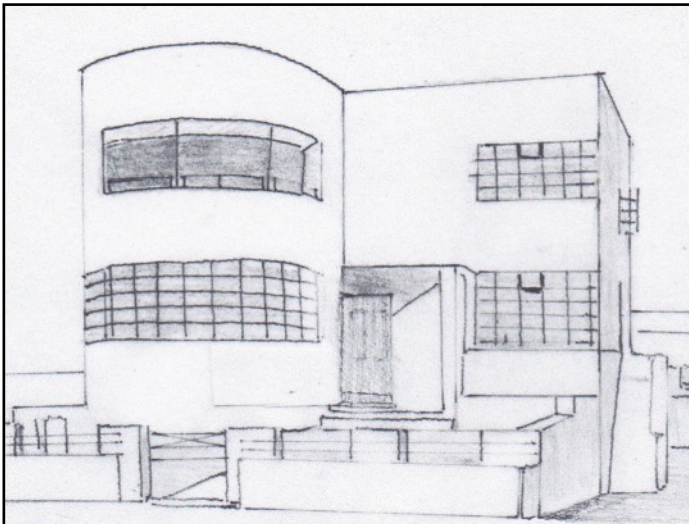
LEFT This was the Jones's ground in 1904 outlined in red. Hopewell is on the northern boundary and Elton House had been built for Captain Thomas Jones's son, also a Captain Thomas Jones. No other houses had been built there. (Detail from the Ordnance survey 25 inch map revised in 1904 and published in 1905, Cardiganshire III.10),



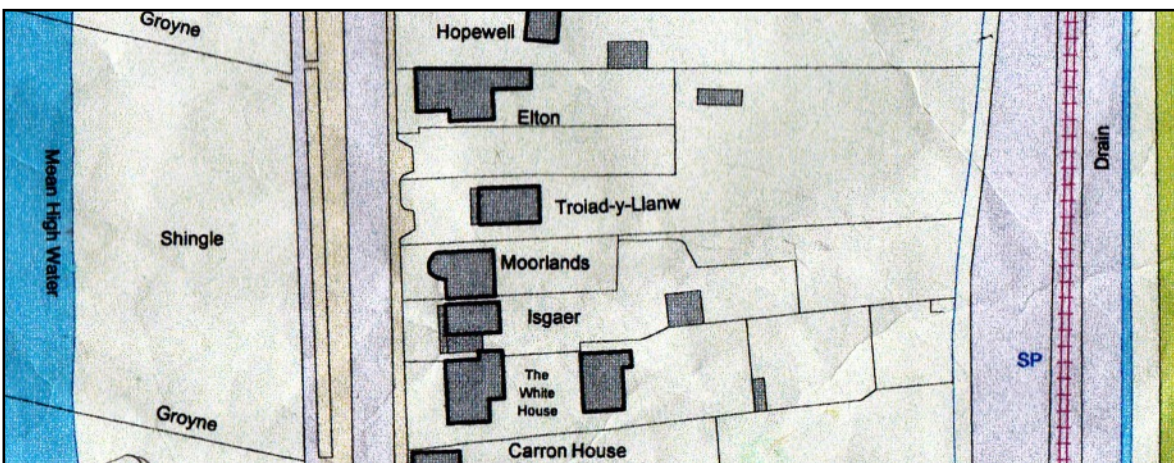
LEFT The Council drew in new houses on their copy of the 1905 25 inch Ordnance Survey Map, and Moorlands then had a wider plot of ground, though with only a small back garden. In 1956 the ground behind was pasture. (Detail from the map revised in 1904 and published in 1905, Cardiganshire III.10,

Paying the rates for the house in 1949 was Geoffrey F. Fisher. In 1957 and 1963 Stanley Ernest Jones was paying the rates. In 1963 Mr Jones and Dorothy Alice Jones had votes for the house.

There are only two houses of this kind in Borth. Below is a sketch from a photograph of Brockhill when it was first built. It is likely that the windows of Moorlands also had the grid



of metal frames. The viewing balcony of Brockhill was enclosed, with a huge open window. Moorlands is simpler as the balcony is open to the skies and there are no windows reaching to the edge of the front wall.



ABOVE Moorlands has quite a small garden which looks as though it was taken out of the garden of Isgaer which may have been built a little earlier (Detail from a modern Council Map courtesy of Councillor Ray Quant who provided it for research for a village event).

Archifdy Ceredigion Archives
yn cyflwyno / presents
Tai'r Borth / Houses of Borth
gan/by Beryl Lewis
[cyf/ref ADX/1629]

Mae **Tai'r Borth** yn cynnwys dros 350 hanes sy'n ymwneud ag adeiladau unigol ac mae'r hanesion wedi'u darlunio â chyfoeth o ffotograffau, mapiau a dogfennau. Mae'r ffeiliau ar gael ar ein gwefan: <https://www.archifdy-eredigion.org.uk/tairborth.php?lang=cy>

Hoffem ddiolch i Beryl am fod mor garedig â chaniatáu i ni rannu ei gwaith â'r gynulleidfa ehangaf bosibl.

Ceidw Beryl Lewis yr hawlfraint yn ei gwaith ac mae'r hanesion yn cael eu rhannu at ddibenion preifat ac ymchwil yn unig.

Houses of Borth consists of over 350 histories of individual buildings, lavishly illustrated with photographs, maps and documents. All the files are available from our website: <https://www.archifdy-eredigion.org.uk/tairborth.php>

We would like to thank Beryl for her kindness in letting us share her work with the widest possible audience.

Beryl Lewis retains the copyright in her work and the histories are made available for private use and research only.



Cyngor Sir
CEREDIGION
County Council



Archifdy
Ceredigion
Archives