

THE BUILDINGS OF MOREFA BORTH

- the Marsh Harbour

Ceredigion



That part of Borth Village on a pebble bank with the sea on one side and the Cors Fochno marsh some reclaimed and the railway on the other. In the distance is the River Dyfi. Photograph Michael Lewis

Photographs and History by BERYL LEWIS

This work is for research and educational purposes only.

LONGMOOR

Morfa Borth - the Marsh Harbour

On the east side of the High Street. Formerly St Matthew's Vicarage for nearly forty years. It replaced an ancient cottage and was built after 1910 and by 1924.



LEFT Longmoor in 2107.

This is a tall house, a generous two storeys high, with an attic floor lit by a dormer window in the front of the roof, and another window in a gable shared with Glenavon next door. It is single fronted, with the door on the northern side and the walls of red brick are rendered. The larger windows have three flat sections, with a diamond pattern on the upper lights. There is a plain modern window in the shared gable and a casement style modern dormer window. The front door is inset a little under a gently curving low arch, and is modern. There is a house nameplate at the top. The building design matches its neighbours, even the shop, suggesting they were built at the same time. As the plot of land on which they stand had just one owner in 1910 this is likely.



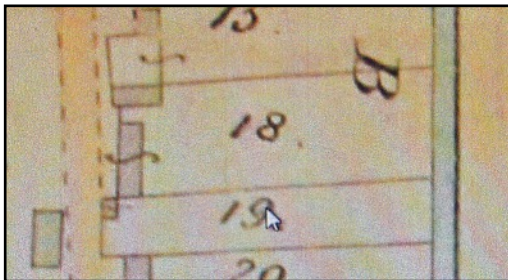
LEFT Longmoor on the right is the third of the three houses and a shop in a terrace. It is likely they were designed to be the same colour, possibly red brick as much of the rear of this terrace is still red brick.



LEFT Longmoor with bright white barge boards shares an extension with Glenavon, and its roof has been renewed and is another colour from its neighbours. It has a chimney on the main roof and shares a chimney on the extension which indicates there was a kitchen below in this part of the building.

Longmoor is built on the site of a terrace of three old cottages set back from the street. The land had been enclosed in 1824 by Evan Hughes from the pebble embankment called 'waste' by the Crown Manor who owned it. It was over half an acre, 2 rods and 7

perches, and in 1829 he was renting it (Number 28, Map of 1829 National Archives LRRO 1/3060) Evan Hughes was a master mariner, commander of the sloop Liverpool Trader in 1825, and owner of 46 of her 64 shares. He owned and commanded the sloop Providence in 1838 and was the owner of the sloop 'Friendship' in 1826. He had shares in other ships and traded shares, and raised mortgages on his ships. He was able to provide very well for his family.



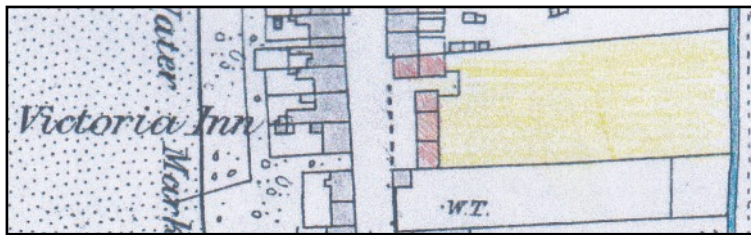
LEFT On a map of 1848 the old cottages and gardens were Number 18 and had new owners John Price and Mary Lewis, and were occupied by John Davies and others. A block of two cottages had been built on the northern end of the ground at right angles to the street. All these cottages shared the

large 'garden' which extended to a brook of fresh water for the villagers (Detail from the Tithe Apportionments Map for Llanfihangel Genau'r Glyn, Cyfoeth Township, Number 18) Mary Lewis was a widow, born in 1786 and she had a daughter Mary. John Davies was a mariner with a wife and children.

In 1861 living in one of the cottages was John Pryse, a merchant seaman, born about 1811, and with a wife Laura from Aberdovey, and a daughter Anna born about 1852 in Borth. It is not possible to find the occupiers of the other cottages.

By 1871 Jane Price a widow of a mariner was there, born at Llynllwyd and elderly, aged 68, and the Census spelt her name Price. She had two unmarried sons, John aged 35 (born about 1836) and Thomas aged 34 (born about 1837). John was to continue to live in their cottage until the beginning of the twentieth century. Elizabeth and Margaret Davies were in another of the cottages.

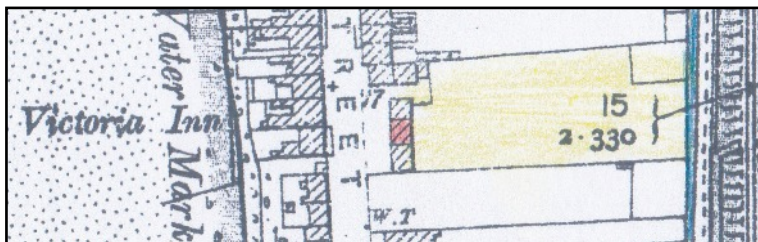
By the 1881 Census one of the cottages was empty. John Price was still there, aged 56 and a 'general labourer'.



LEFT The cottages in 1886, marked in red. The fact that they all shared the large garden at the back suggests they had one owner (Detail from the 25 inch Ordnance Survey Map surveyed in 1886 and published in 1888,

Cardiganshire NW III.10)

In 1891 John Pryse was still there aged 66 a 'farm labourer'. In 1901 he was a 'railway labourer' aged 77. His cottage was the street front of the two built at right angles to the street.



LEFT In 1904 marked in red is the old cottage approximately where Longmoor stands today (Detail from the 25 inch Ordnance Survey Map revised in 1904 and published in 1905, Cardiganshire NW III.10)

In 1911 John Pryse was still there, aged 87. He was all by himself (Census) His cottage had three rooms - probably a main living room and kitchen, a central passageway and a main bedroom downstairs and a 'loft' above. In 1910 he was listed as the owner of all the ground - including his own cottage and the row of three by now very old cottages - no tenants are given for them.



LEFT We can see his cottage on an old postcard sent in 1909, it was kept nicely whitewashed or rendered. It is clear from the picture that this was a rubble stone cottage - probably with rounded stones from the beach. Its stone chimney was on the street side, and its window was not very large. John Pryse would still have been there. We do not have a picture of the other old cottages but they were all still standing in 1905 after 81 years (Detail from a postcard courtesy of Peter Fleming)

In 1910 for a tax planned but not levied, John Pryse owned everything, the whole plot with the cottages. He would have paid £2.8s, £3 gross for his cottage, but the value with the half acre was £475. A potential building plot price perhaps as the half an acre of ground had survived and would be available for new buildings.

On this ground Glenavon was already built in 1924, and in 1925 the name of the new house now Longmoor was 'St Matthew's as it was the vicarage for Borth's church. The vicar there was the Rev. Edwin Phillip Davies, and he had been Borth's vicar since 1913 (Kelly's Directory of South Wales, 1926, Ceredigion Archives). The Rev. J. Bowden Thomas was there in 1934 and still there in 1949. The Rev. Idris Jones was there in 1957. In 1963 the Rev. J. K. Williams

was there with his wife Jane Alice Williams and they had votes for the house. Paying the rates was Mrs Budge the Treasurer for the Church (Electoral Registers and Rates, Ceredigion Archives).

RIGHT The four houses sometime before 1945. Longmoor second from the right does not appear to have had a hood over its front door. The houses fitted tightly into the site of the three cottages, but were not set back from the street. If you look carefully you can just see the edge of John Pryse's cottage (Amgueddfa Ceredigion Museum).



In 1975 the house was still the Vicarage. It had an enclosed garden and it is possible that the vicars had a garage on the land at the back which was still shared with the rest of the Terrace (Historical Maps online).

The vicars moved to a vicarage at Cliff Road Upper Borth and Longmoor could become a private house or flats.

Archifdy Ceredigion Archives
yn cyflwyno / presents
Tai'r Borth / Houses of Borth
gan/by Beryl Lewis
[cyf/ref ADX/1629]

Mae **Tai'r Borth** yn cynnwys dros 350 hanes sy'n ymwneud ag adeiladau unigol ac mae'r hanesion wedi'u darlunio â chyfoeth o ffotograffau, mapiau a dogfennau. Mae'r ffeiliau ar gael ar ein gwefan: <https://www.archifdy-eredigion.org.uk/tairborth.php?lang=cy>

Hoffem ddiolch i Beryl am fod mor garedig â chaniatáu i ni rannu ei gwaith â'r gynulleidfa ehangaf bosibl.

Ceidw Beryl Lewis yr hawlfraint yn ei gwaith ac mae'r hanesion yn cael eu rhannu at ddibenion preifat ac ymchwil yn unig.

Houses of Borth consists of over 350 histories of individual buildings, lavishly illustrated with photographs, maps and documents. All the files are available from our website: <https://www.archifdy-eredigion.org.uk/tairborth.php>

We would like to thank Beryl for her kindness in letting us share her work with the widest possible audience.

Beryl Lewis retains the copyright in her work and the histories are made available for private use and research only.



Cyngor Sir
CEREDIGION
County Council



Archifdy
Ceredigion
Archives