

# THE BUILDINGS OF MOREFA BORTH

- the Marsh Harbour

Ceredigion



That part of Borth Village on a pebble bank with the sea on one side and the Cors Fochno marsh some reclaimed and the railway on the other. In the distance is the River Dyfi. Photograph Michael Lewis

Photographs and History by BERYL LEWIS

*This work is for research and educational purposes only.*

## THE LODGE

The southernmost of a terrace of tall buildings on the east of the High Street. Built after 1910 but by 1925, and replacing a very old cottage set back from the street. This was a useful place to live, not too far from the railway station, and opposite the Victoria Inn.



*LEFT The Lodge in 2009 before an extension was built on the south side. All the windows and doors are modern. It is likely that the original walls of the terrace houses were the same colour - perhaps red brick as large area of this survives on the rear of the buildings.*

The house is a generous two storeys high with a gable facing the street linked to a gable roof parallel to the High Street, with windows for attic rooms and a slender chimney. The house is single fronted and has its front door on the south side. The walls of red brick are rendered with rough cast. The ground floor window has a shallow canted bay as have the windows above. Railings enclose a narrow front area.



*LEFT Beside the house a new single storey section was built during the winter of 2014 - 2015 using modern methods with a brick base and blocks faced with local stone. It has a second floor under the roof.*



ABOVE The rear of the house in 2015 with its recently built extension. This has a floor in the roof with rooflights and the large dormer window will have a fine view over the railway, the reclaimed pastures and the Cors Fochno marsh to the hills beyond. The old house has a rendered extension on the south side and has half of a conservatory with Longmoor. Today the extension is a separate home with its own front door and at the end of the wooden fence round the back garden is a door into The Lodge. In the foreground is the lane of Clos y Bryngwyn.

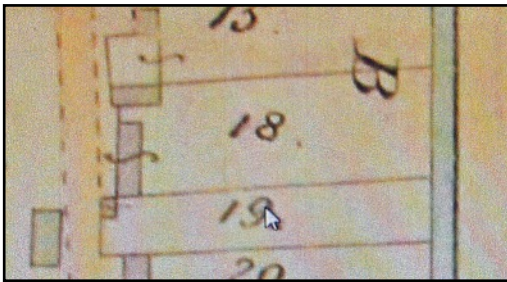
RIGHT This house matches Gwynfryn on the other end of the terrace of four - except it has no shop window. This picture was taken in 2017 when all the windows of the houses had been replaced with modern ones.



LEFT The windows may once have looked like this - Longmore on the left and Glenavon still had them in 2009.

This house is built on the site of the southernmost of an ancient terrace of three cottages set back from the street. They were Number 28 on a map of 1829 and the land had been enclosed in 1824 from the pebble embankment 'waste' by Evan Hughes. It was over half an acre, 2 rods and 7 perches, and he rented it from the Crown who owned the manor. (Map, National Archives LRRO 1/3060) Evan Hughes was a master mariner, captain of the sloop Liverpool Trader in 1825,

and owner of 46 of her 64 shares. He owned the sloop Providence in 1838 was the captain and owner of the sloop 'Friendship' in 1826. He had shares in other ships and traded shares, and raised mortgages on his ships. He was able to provide very well for his family.



*LEFT* On a map of 1848 this ground and cottages are Number 18. There were new owners, John Price and Mary Lewis, and the cottages and gardens were occupied by John Davies and others. There was also a pair of cottages built on the northern end of the ground, at right angles to the street. All these cottages shared the 'garden' which extended to a 'brook' of fresh water for the villagers. (Detail from the Tithe Apportionments Map for Llanfihangel Genau'r Glyn, Cyfoeth Township, on-line at CYNEFIN).

Mary Lewis was a widow, born in 1786 and she had a daughter Mary. John Davies was a mariner with a wife and children.

In 1851 at the Census living in one of the cottages was John Pryse, a merchant seaman, born about 1811 with his wife Laura from Aberdovey, and a daughter Anna born about 1852 in Borth. In the 1861 Census it is not possible to find the occupiers of the other cottages. By 1871 Jane Price a widow of a mariner was there, and the Census spelt her name Price. She had two unmarried sons, John aged 35 (born about 1836) and Thomas aged 34 (born about 1837). There were Elizabeth and Margaret Davies in another of the cottages.

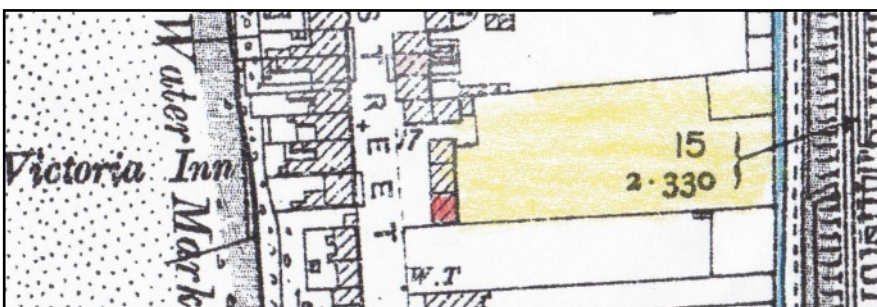
In the 1881 Census one of the cottages was empty. It is not possible to find the occupants of the others.



*LEFT* The cottages in 1886 marked in red and their ground marked in yellow. The surveyor has drawn them all with the same owner (Detail from the 25 inch Ordnance Survey Map surveyed in 1886 and published in 1888,

Cardiganshire NW III,10)

In the Census of 1881 John Pryse was there, aged 56 and a 'general labourer'. In 1891 he was still there aged 66 a 'farm labourer'. He lived in the cottage sideways to the High Street and nearest it. In 1901 he was a 'railway labourer' aged 77.



*LEFT* The cottage at the end of the row in 1904 is where The Lodge stands today (Detail from the 25 inch Ordnance Survey Map revised in 1904 and published in 1905, Cardiganshire NW III,10)

In 1911 John Pryse was still there, aged 87. He was all by himself. His cottage had three rooms - probably a main living room and kitchen, a central passageway and a main bedroom downstairs and a 'loft' above. In 1910 for a tax planned but not levied he was listed as the owner of all the ground and the three by now very old cottages (81 years) - no tenants are given for them - and his own cottage. He would have paid £2.8s, £3 gross for



his cottage, but the value with the half acre was £475. A potential building plot price perhaps?

*LEFT His cottage in the foreground was kept nicely whitewashed. It is clear from the picture that this was a rubble stone cottage - probably with rounded stones from the beach. Its stone chimney was on the street side, and its window was not very large and was a sash window with 16 lights and thin glazing bars (Postcard courtesy of Peter Fleming)*

In January 1924 The Lodge, a 'freehold residence' was built and up for sale by the Cooke Brothers, Aberystwyth, together with three farms owned by Miss Lewis in 1910. (Cambrian News) In 1925 paying Rates for the house was J. R. Evans, he was the owner and occupier. Sometime after 1922 furnished apartments were advertised there of five bedrooms and two sitting rooms (The Illustrated Borth Guide, price 6d. - Aberystwyth Public Library).

*RIGHT A detail from an old postcard shows the house on the far right. Its walls were rendered and there was a hood over the front door. There was no front garden (Postcard Amgueddfa Ceredigion Museum)).*



*RIGHT Another old postcard pre-1945 shows the d i a m o n d patterns on the top sections of sash windows. There is a glimpse of John Pryse's cottage at the end of the row of tall houses (Postcard private collection).*



*The Lodge Page 5*

In August 1934 Mrs Anderson of the Lodge gave a recipe for Tea Scones to the St Matthew's Church Bazaar. Wed 15 August, Cambrian News).

In 1945 with votes for the house at the General Election were Thomas J. Jones and Linda M. Jones. Mr Jones also paid the Rates for it in 1949. (Ceredigion Archives)

Mrs Linda Jones paid the rates in 1957.

A. Fielding paid the rates in 1963 and Frederick H. Biddle had a vote for the house (Electoral Registers and Rates, Ceredigion Archives).

In 1975 the old Pryse cottage was still there, and the block of houses were still sharing the ground at the back (Detail, Historical Maps on-line).

When the Pryse cottage was demolished there was room for a drive alongside Gwynfryn with access to the rear of all four houses.

Archifdy Ceredigion Archives  
yn cyflwyno / presents  
**Tai'r Borth / Houses of Borth**  
gan/by Beryl Lewis  
[cyf/ref ADX/1629]

Mae **Tai'r Borth** yn cynnwys dros 350 hanes sy'n ymwneud ag adeiladau unigol ac mae'r hanesion wedi'u darlunio â chyfoeth o ffotograffau, mapiau a dogfennau. Mae'r ffeiliau ar gael ar ein gwefan: <https://www.archifdy-ceredigion.org.uk/tairborth.php?lang=cy>

Hoffem ddiolch i Beryl am fod mor garedig â chaniatáu i ni rannu ei gwaith â'r gynulleidfa ehangaf bosibl.

Ceidw Beryl Lewis yr hawlfraint yn ei gwaith ac mae'r hanesion yn cael eu rhannu at ddibenion preifat ac ymchwil yn unig.

**Houses of Borth** consists of over 350 histories of individual buildings, lavishly illustrated with photographs, maps and documents. All the files are available from our website: <https://www.archifdy-ceredigion.org.uk/tairborth.php>

We would like to thank Beryl for her kindness in letting us share her work with the widest possible audience.

Beryl Lewis retains the copyright in her work and the histories are made available for private use and research only.



Cyngor Sir  
**CEREDIGION**  
County Council



Archifdy  
Ceredigion  
Archives