

THE BUILDINGS OF MOREFA BORTH

- the Marsh Harbour

Ceredigion



That part of Borth Village on a pebble bank with the sea on one side and the Cors Fochno marsh some reclaimed and the railway on the other. In the distance is the River Dyfi. Photograph Michael Lewis

Photographs and History by BERYL LEWIS

This work is for research and educational purposes only.

LERRY COTTAGES

This was two cottages once. They were not there in 1848, but were built by 1886. They appear on the 25 inch Ordnance Survey Map of 1888 surveyed in 1886. They were semi-detached and joined on to the back of an already existing house originally a cottage owned by the Daniel family - Anne Daniel widow was still there in 1861.



Leri Cottages in 2019. It was having new rendering.

This is a two storey building at the back of Ty Leri. Its back butts up against the White Lion Lane terrace. The larger south facing windows have the pattern of sash windows and all the windows and the doors are modern. A single storey narrow building butts up against Ty Leri. Access from the High Street is by a passageway along the south side of Leri House.

LEFT The gable end of Lerry Cottages is in the centre of this photograph. It has one upper window and a back door below. There is a small yard or garden area, and beyond a long strip of ground leading down to the ditch - the old brook.

Leri Cottages stands on the east side of the stone bank thrown up by the sea, and partly on the reclaimed marsh.

The road was centuries old, having been a turnpike road in the 1770s. It led to a ferry to Aberdovey, a quick way to reach North Wales. The stone bank belonged to the Crown Manor who called it waste as it was no use for farming. This was gradually enclosed to have cottages built beside it.



LEFT A cottage stands on the road end of Number 36 on this map of 1829, and this would be the site of Ty Leri. The cottages behind were not there then (Detail copied from a Map, National Archives LRRO 1/3060).



LEFT By the 1848 Tithe Map, it was Number 28, and the cottage had been considerably enlarged at the back. We know the owner was Anne Daniel, a widow, and she lived there. That surveyor made the site 27 perches, and it was described as a 'cottage and garden'

(A detail from the Tithe Apportionments Map for Llanfihangel Genau'r Glyn, Cyfoeth Township, on-line at CYNEFIN))

Anne Daniel was the widow of master mariner Captain Thomas Daniel who had died by October 1836, but who would have made a good living for his family. (Shipping Register Ceredigion Archives). Four children had been born there, David Daniel, Nov, 4 1830, James Watkin Daniel, 9 April 1833, and Rosina Daniel 25 September 1835. Thomas would become a master mariner, and James Watkin also became a master mariner and had shares in ships. Rosina gave her name to a schooner of 91 tons built in 1851 which sailed until 1893. James Watkin Daniel was her captain in 1855. (Shipping Register Ceredigion Archives). Ann Daniel was still in the cottage in the 1851 and 1861 Census's. She was born in Caergorwydd, Cardiganshire in c. 1807 and her husband Captain Thomas was a member of the Daniel family who were farming at Pen-y-graig Farm on Gwastad, Upper Borth. By 1861 Rosina had married and she and a small grandson, Evan J. Evans aged one were living in the cottage with her mother.

The railway opened in 1863 for passengers and there was building or rebuilding of houses in Morfa Borth as it had a future as a promising seaside resort available to people from the Midlands who could come on the train. By the 1871 Census Anne Daniel was gone from there and it is not possible to trace the cottage in that list.

Sometime after that Ty Leri was built and the Ty Leri Cottages. Beatrice next door and the White Lion Place row of cottages were all part of a development by Enoch James on his White Lion Inn ground.

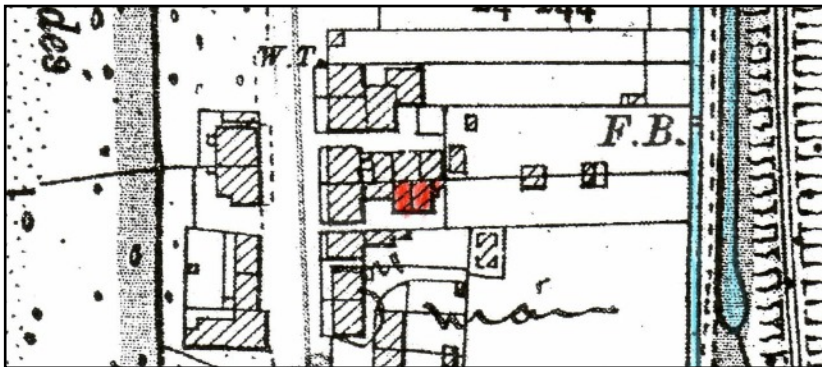


LEFT The two Leri Cottages in 1886 are marked in red. The surveyor has drawn them as owned with Ty Leri then called Lerry Villa (Detail from the 25 inch Ordnance survey Map surveyed in 1886 and published in 1888, Cardiganshire, NW).

By the 1891 Census living in Lerry Villa was a retired farmer called Abraham Jones, born in c. 1808 in Borth. Rents from the cottages would add to his income in retirement.

The two cottages first appear in a Census in 1901. In the one nearest the garden lived Anne Lewis, an unmarried charwoman of 65, so she was born about 1836 in Llandre, and was a Welsh speaker. By 1911 she was working as a laundress - at home. Also there was her daughter Jane aged 28 born about 1841 in Llandre who was a dressmaker. The 1911 Census said the cottage had 3 main rooms - not including any scullery.

The other cottage, nearest to Ty Leri was smaller with only two main rooms in the 1911 Census. Living there was Phoebe Jenkins, an unmarried lady aged 74, born in Borth c. 1837 or 1839.



LEFT The two cottages in 1904. There was a small extension on the back of Number 2 possibly with a Ty Bach - outside lavatory. The small buildings in the long strip of garden may have had a pigs or chickens (Detail from the 25 inch Ordnance Survey Map revised in 1904 and published in 1905, Cardiganshire,

NW).

A valuation for a tax planned but not levied in 1910 assessed each cottage at £65 with £2.4s to pay, £2.15s gross. Lewis Lloyd of Lerry Villa (Ty Leri) owned both of them. Both are listed as a 'house with a garden' so they must have shared the Villa's garden. Both had permanent tenants so were not being used as holiday accommodation.

In 1925 paying the Rates for the cottages were Jane Lewis, and Richard B. Evans and the owner was John Lloyd who also owned Lerry Villa.

With a vote for one of them in 1945 was Gwesta M. Edwards.

In 1949 paying the Rates were Jane Lewis and W. C. Edwards and they had votes for the cottages in 1963 (Electoral Registers and Rates, Ceredigion Archives).

On a modern Council Map the cottages and Ty Leri are still as they were in 1904 except that no small buildings are marked in the long strip of garden.

Archifdy Ceredigion Archives
yn cyflwyno / presents
Tai'r Borth / Houses of Borth
gan/by Beryl Lewis
[cyf/ref ADX/1629]

Mae **Tai'r Borth** yn cynnwys dros 350 hanes sy'n ymwneud ag adeiladau unigol ac mae'r hanesion wedi'u darlunio â chyfoeth o ffotograffau, mapiau a dogfennau. Mae'r ffeiliau ar gael ar ein gwefan: <https://www.archifdy-ceredigion.org.uk/tairborth.php?lang=cy>

Hoffem ddiolch i Beryl am fod mor garedig â chaniatáu i ni rannu ei gwaith â'r gynulleidfa ehangaf bosibl.

Ceidw Beryl Lewis yr hawlfraint yn ei gwaith ac mae'r hanesion yn cael eu rhannu at ddibenion preifat ac ymchwil yn unig.

Houses of Borth consists of over 350 histories of individual buildings, lavishly illustrated with photographs, maps and documents. All the files are available from our website: <https://www.archifdy-ceredigion.org.uk/tairborth.php>

We would like to thank Beryl for her kindness in letting us share her work with the widest possible audience.

Beryl Lewis retains the copyright in her work and the histories are made available for private use and research only.



Cyngor Sir
CEREDIGION
County Council



Archifdy
Ceredigion
Archives