

# THE BUILDINGS OF MOREFA BORTH

- the Marsh Harbour

Ceredigion



That part of Borth Village on a pebble bank with the sea on one side and the Cors Fochno marsh some reclaimed and the railway on the other. In the distance is the River Dyfi. Photograph Michael Lewis

Photographs and History by BERYL LEWIS

*This work is for research and educational purposes only.*

# KYANA Morfa Borth

On the beach side in the northern part of Borth High Street. Built after July 1970. It replaced two cottages in Adelaide Place belonging originally to a Simon family of master mariners.

*BELOW Kyana in 2016*



Kyana is a wide two storey, end of terrace house with a low pitch gable roof parallel to the street. The front is in two sections the northern one having an integral passage to a garage. The narrow front garden area is enclosed by a low wall with a gate at the northern end. The northern gable end of the house does not have windows because it overlooks the

Victoria Inn's public passage through to its beach front. The house is barely two storeys high and its taller neighbours give it the feel of a cottage.

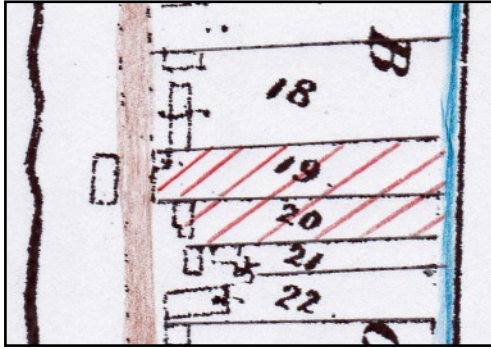


*LEFT The rendering has curved shapes scratched in it, and there is a diving bird mosaic decoration. RIGHT The front door is modern and decorative.*



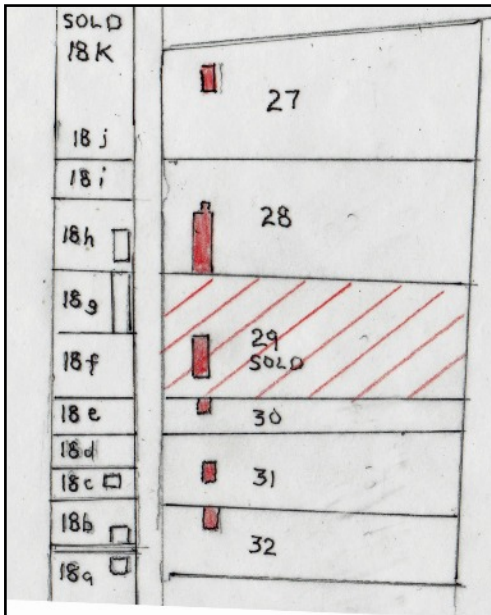


The ground for this house is the stone bank thrown up by the sea and called 'waste' by the Crown Manor who owned it as it was no use for farming. On a map of 1829 it was beach (National Archives LRRO 1/3060). The road had been there for centuries, it was used in the twelfth century and was a turnpike road by the 1770s. It led to a ferry from Ynyslas to Aberdovey and was a quick way to North Wales. Fresh water for the cottages and houses came from a brook behind the buildings on the other side of the road. By 1886 there were taps in the streets. When this house was built the village had a modern water supply and a sewage works.



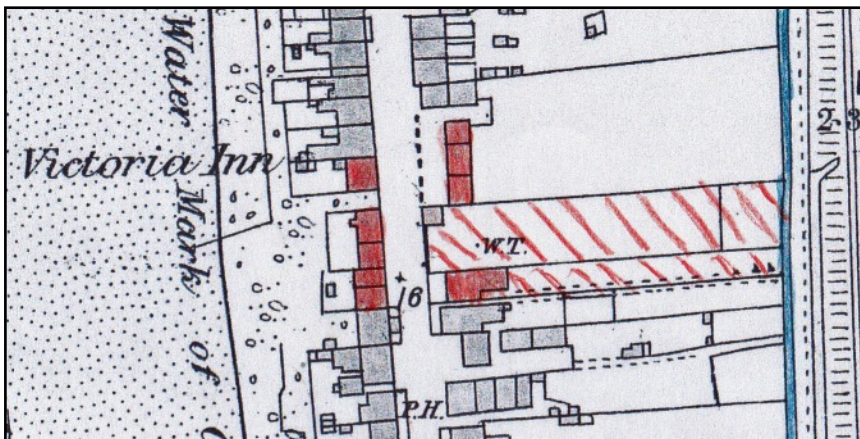
In 1824 on the other side of the street, Margaret Simon, a master mariner's widow, had an encroachment of 2 rods and 16 perches (over half an acre) with a cottage or house on it (Map National Archives LRRO 1/3060).

*ABOVE LEFT* In 1848 the striped ground was Margaret Simon's with her house on plot 20 and garden on plot 19. Over the road the surveyor has drawn a building (later two cottages). Because no tithe had to be paid on cottages with no gardens we have no details about them (Tithe Apportionments Map Llangihangel Genau'r Glyn, Cyfoeth Township - on line at CYNEFIN - National Library of Wales).



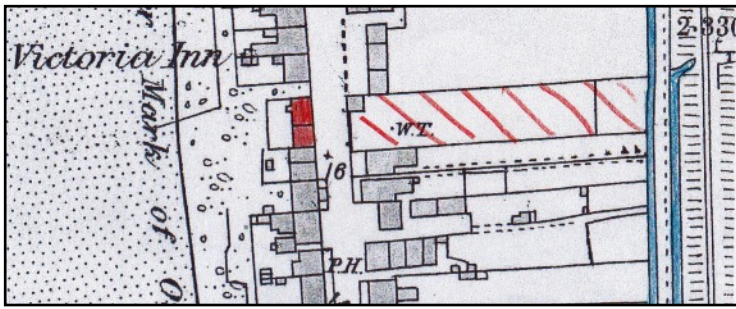
*LEFT* We can see them better on this copy from a map of 1859. They were on plot 18g, and were nearly the last cottages on the beach side, the other one drawn was rebuilt as 'Chester House' by railway platelayer George Dutton for his family, and is now part of the Victoria Inn. Cottages over the road, coloured red, were much older and on a map of 1829 (Plot 18g, Map, National Archives LRRO 1/3060)

Captain John Simon 1807 - 1881 the son of Margaret Simon and her mariner husband, had commanded the sloop Rebus but it was lost in 1855. He then commanded the schooner Adelaide in 1861, and named his home 'Adelaide' after her so the nearby cottages became known as 'Adelaide Place'. He owned many of them and must have bought the marked out beach side plots from the Crown. His wife Mary was born about 1816.



*LEFT* Marked in red are the nine cottages called Adelaide Place in the 1881 Census. Mary Simon (probably John's widow) was living in the one on the beach side next to the gap in the row. It was the biggest and best of the row and it and its neighbour are now the site of Kyana. Next

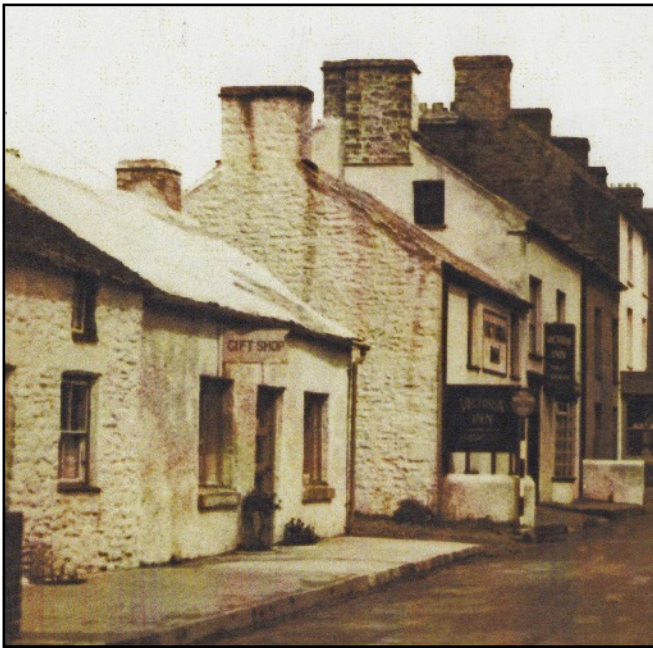




door was her daughter Eliza who had wed a mariner John Hughes. Over the road Bryngwyn had replaced the Simon's old house I

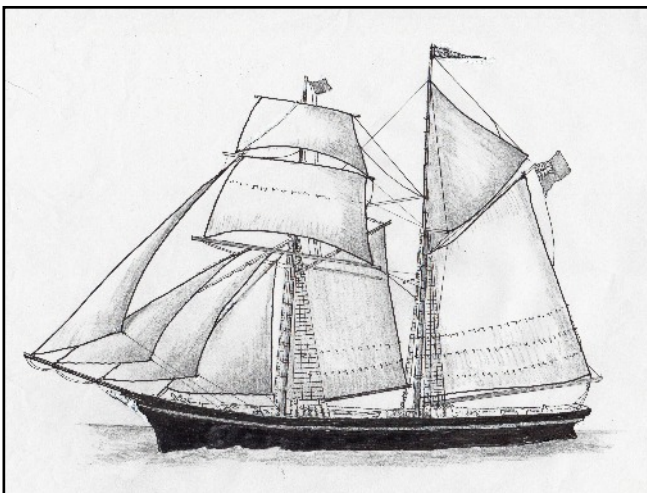
LEFT Marked in red are the two cottages that are on the site of Kyana. The largest, next to the passage to the beach, the widowed Margaret Simon's home was called Number 4 Adelaide Place in 1881. Possibly this was the main Simon home at that time and called 'Adelaide'. The surveyor has marked the Hughes's cottage with the same owner, and they shared a yard. The cottages had no extensions on the back and opened directly on to the street. The small building on the back

of the biggest cottage was probably their Ty Bach - outside lavatory. The Simon family still owned the ground over the road marked with stripes. (Details from the 25 inch Ordnance Survey Map sryveyed in 1886 and published in 1888. Cardiganshire III.10)



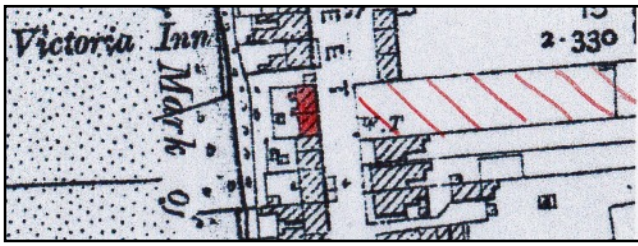
LEFT This detail from an old postcard shows the two cottages on the site of Kyana. The cottage next to the passage was then a 'Gift Shop' and the one next to it had rubble stone walls, including round stones from the beach in its front wall. The cottage beyond was once Chester House.

RIGHT The detail from a postcard posted in 1968 shows the cottages. The Simon family had built a better pair of houses for themselves next door, now Hafan and Glan Ynys.



LEFT Captain John Simon's Adelaide was a schooner. She was 45 tonnes and built in Aberystwyth in 1835 and sailed until 1873 when she was broken up at Newquay. (Shipping Register, Aberystwyth, Ceredigion Archives. The drawing is based on another Borth schooner, the Dovey Belle).

In 1891 there was a younger Mary Simon, then aged 55 in Cottage Number 4. She was not Captain Simon and his wife Margaret's daughter, but would have been their son John Simon's wife. She was earning a living as a 'baker'. In the cottage next door was a mariner called David Jenkins with his wife and three children. He worked as a monumental



mason's worker and apprentice.

*LEFT In 1904 the two cottages were still together. There was a new small building in the yard and a protective fence out on the stones. It would have been a row of stakes hammered into the stone bank at an angle. The black line is*

*the normal high tide mark (25 inch Ordnance survey Map revised in 1904 and published in 1905. Cardiganshire III.10.*

In 1910 for a tax planned but not levied, in Mary Simon's cottage was Eliza Hughes. Both cottages were owned by John Simon who was living in the Simon's bigger house further along the row, now called Hafan. Mary Simon's cottage was valued at £22. 10s, and the Jenkins's cottage at £35, more valuable perhaps because it had an upper floor Ceredigion Archives, T/DV/18 and map at the National Library of Wales).

In 1911 at the Census the Jenkins' son 28 year old David Jenkins was in the their cottage. He had become a mariner. Also in the cottage was his 23 year old sister Jane. Neither had married. The cottage had four main rooms.

In 1925 paying the rates of both cottages were 'the executors of William Davies'. They were the owners, no-one is listed as living in the two cottages.

In 1934 the occupier of the Jenkins's cottage was Arthian Davies, and T. L. Tibbott was his tenant and paid the rates for it in 1938. No-one was listed for Mary Simon's cottage.

Arthur Ford and Mary A. Ford had votes for Mary Simon's cottage in the 1945 General Election and in 1949 Arthur Ford paid the rates for both the cottages. In 1963 Mrs Ford paid the rates for one of them (Electoral Registers and Rates in the Ceredigion Archives).

Thereafter the pair of old cottages were pulled down for a site for Kyana. That is the reason why it has a wide front, it was replacing two cottages.

Kyana was not yet built in July 1970 - the two cottages were still there, one called 'Adelaide and the other 'Gift Shop' when listed on Aberystwyth Rural Council's plans for improving the sea defences behind the beach side houses. They were going to build a new wall of vertical sleepers, 10 foot landward of the existing row and projecting about 2 foot above the shingle.

In 1994 Kyana was the home of Professor Bryn Hubbard of Aberystwyth University, a distinguished glaciologist, awarded the 'Polar Medal' in 2016, formerly given to such polar explorers as Captain Scott and Ernest Shackleton. (Y Tincer Medi 1994)

The origin of the name 'Kyana' is not known. It was a female name for someone good and gracious, some families have it as a surname, and it is the name of a place in Kentucky in America.





*ABOVE The house from the beach in 2016. A wing reaches out into the yard on the north, two storey and then a single storey, the upper floor having a fine view of the sea. There are other extensions and buildings in the yard. Access to the beach is through a boarded gateway. Above it is a wire netting fence across all of the yard with slender posts allowing views of the beach.*

Archifdy Ceredigion Archives  
yn cyflwyno / presents  
**Tai'r Borth / Houses of Borth**  
gan/by Beryl Lewis  
[cyf/ref ADX/1629]

Mae **Tai'r Borth** yn cynnwys dros 350 hanes sy'n ymwneud ag adeiladau unigol ac mae'r hanesion wedi'u darlunio â chyfoeth o ffotograffau, mapiau a dogfennau. Mae'r ffeiliau ar gael ar ein gwefan: <https://www.archifdy-eredigion.org.uk/tairborth.php?lang=cy>

Hoffem ddiolch i Beryl am fod mor garedig â chaniatáu i ni rannu ei gwaith â'r gynulleidfa ehangaf bosibl.

Ceidw Beryl Lewis yr hawlfraint yn ei gwaith ac mae'r hanesion yn cael eu rhannu at ddibenion preifat ac ymchwil yn unig.

**Houses of Borth** consists of over 350 histories of individual buildings, lavishly illustrated with photographs, maps and documents. All the files are available from our website: <https://www.archifdy-eredigion.org.uk/tairborth.php>

We would like to thank Beryl for her kindness in letting us share her work with the widest possible audience.

Beryl Lewis retains the copyright in her work and the histories are made available for private use and research only.



Cyngor Sir  
**CEREDIGION**  
County Council



Archifdy  
Ceredigion  
Archives