

THE BUILDINGS OF MOREFA BORTH

- the Marsh Harbour

Ceredigion



That part of Borth Village on a pebble bank with the sea on one side and the Cors Fochno marsh some reclaimed and the railway on the other. In the distance is the River Dyfi. Photograph Michael Lewis

Photographs and History by BERYL LEWIS

This work is for research and educational purposes only.

GWELFOR

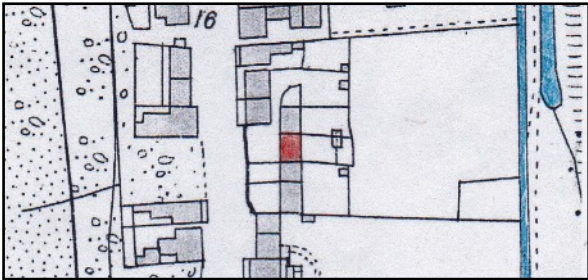
Morfa Borth - the Marsh Harbour

Newly built, or a rebuild of an old cottage, Thomas Owen's Pwllmawr Dairy Farm in 1910. Built by 1925 and the home of a monumental mason Thomas Richards.

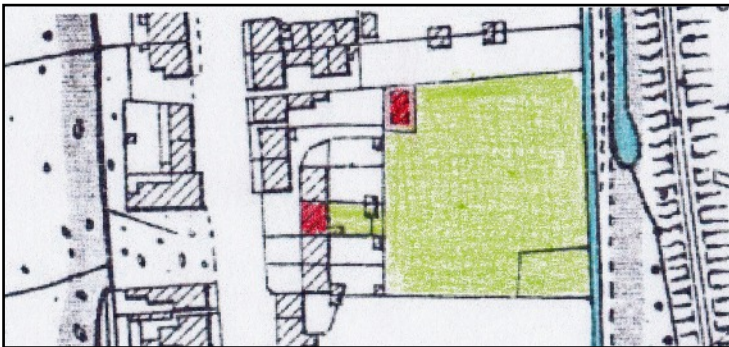


Gwelfor is built on a pebble embankment built up by the sea, and behind it is land drained from the Cors Fochno peat bog. The house is single fronted and two and a half storeys high. It is a bold design. Half of the front extends forwards and is topped by a dormer window. Below is a square bay window on the first floor, and a larger bay window on the ground floor. All the windows are matching, and the roof of the bays are part of the design. The upper window lighting a second floor room under the roof has a gable and is quite large. It is framed and surrounded by a mock Tudor pattern of dark wooden timbers popular in the 1920s and 1930s. The timbers may have been treated with Stockholm tar, and the spaces between filled with plaster work. They are probably a wooden decoration on a plastered surface. The barge board is plain. The window above the front door is edged with dark wood. The main roof is a gable roof parallel to the street and is topped with red ridge tiles and with a red brick chimney on the south. It is likely that the walls of the house are brick. The modern front door is on the northern side of the front,

set back. There is a front garden enclosed by a low stone wall. The house is L shaped, a deep building extending almost to its back fence or wall. This does not spread across all of the back, the southern side ends parallel with the cottages next door, and this section has a small porch-like extension at the rear as well/



LEFT Marked in red is the site of the cottage on which Gwelfor was built. This is how it looked on the Ordnance Survey Map published in 1888 but surveyed in 1886. The brook that had fresh water is marked in blue and so is the pool beyond, 'pwll' in Welsh (Map Cardiganshire NW III.10).



LEFT On the 25 inch map of 1905 revised in 1904 Pwllmawr was still a cottage, part of a Dairy Farm. Also marked in red was a stable on land marked green that belonged to the farmer, Thomas Owen in the Valuation of 1910. (Ceredigion Archives and map National Library of Wales)

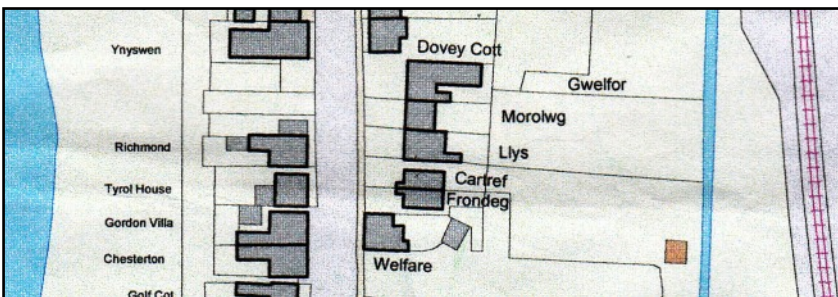
This building grew up out of a terrace of four cottages, and in 1962 there was still the ruin of one on the north side of it. In 1925 the house owned the land at the rear of all the cottages. The owner and occupier was Thomas Richards. He was a self employed monumental mason. He was born about 1878 in Borth. In 1901 aged 23 and already a self employed monumental mason he was living at home with his mother Jane, a mariner's wife in Madeira House now called Glan-y-mor. It was small with only 4 main rooms in 1911. So he became very successful to be able to own and occupy Gwelfor in 1925 (Rates, Ceredigion Archives)

By 1949 Catherine Richards was the owner.

In 1957 P. Barnard and then R.C. Barnard paid the rates.

With votes for the house in 1963 were Peter Nevin Barnard and Freda Constance Barnard (Electoral Registers Ceredigion Archives).

Gwelfor is a Welsh name for the house and it means 'Seaview'. When built there were good views of the sea as there was no house directly opposite.



LEFT A map of 1975 and this modern Council map shows the shape of the house. It shared a back boundary with all of its neighbours and has only a small garden or yard. Interestingly all the boundaries of the original

encroachment of master mariner Captain John Hughes in 1822 still survived - from Gleaner to Llys (Historical Maps On-line and Council Map courtesy of Councillor Ray Quant).



LEFT In the foreground is Gwelfor about 1962. It had lattice windows.

For the story of the Captain Hughes his cottages and the ground please see 'Pwllmawr Cottage'.

Archifdy Ceredigion Archives
yn cyflwyno / presents
Tai'r Borth / Houses of Borth
gan/by Beryl Lewis
[cyf/ref ADX/1629]

Mae **Tai'r Borth** yn cynnwys dros 350 hanes sy'n ymwneud ag adeiladau unigol ac mae'r hanesion wedi'u darlunio â chyfoeth o ffotograffau, mapiau a dogfennau. Mae'r ffeiliau ar gael ar ein gwefan: <https://www.archifdy-ceredigion.org.uk/tairborth.php?lang=cy>

Hoffem ddiolch i Beryl am fod mor garedig â chaniatáu i ni rannu ei gwaith â'r gynulleidfa ehangaf bosibl.

Ceidw Beryl Lewis yr hawlfraint yn ei gwaith ac mae'r hanesion yn cael eu rhannu at ddibenion preifat ac ymchwil yn unig.

Houses of Borth consists of over 350 histories of individual buildings, lavishly illustrated with photographs, maps and documents. All the files are available from our website: <https://www.archifdy-ceredigion.org.uk/tairborth.php>

We would like to thank Beryl for her kindness in letting us share her work with the widest possible audience.

Beryl Lewis retains the copyright in her work and the histories are made available for private use and research only.



Cyngor Sir
CEREDIGION
County Council



Archifdy
Ceredigion
Archives