

# THE BUILDINGS OF MOREFA BORTH

- the Marsh Harbour

Ceredigion



That part of Borth Village on a pebble bank with the sea on one side and the Cors Fochno marsh some reclaimed and the railway on the other. In the distance is the River Dyfi. Photograph Michael Lewis

Photographs and History by BERYL LEWIS

*This work is for research and educational purposes only.*

# THE CLUB HOUSE,

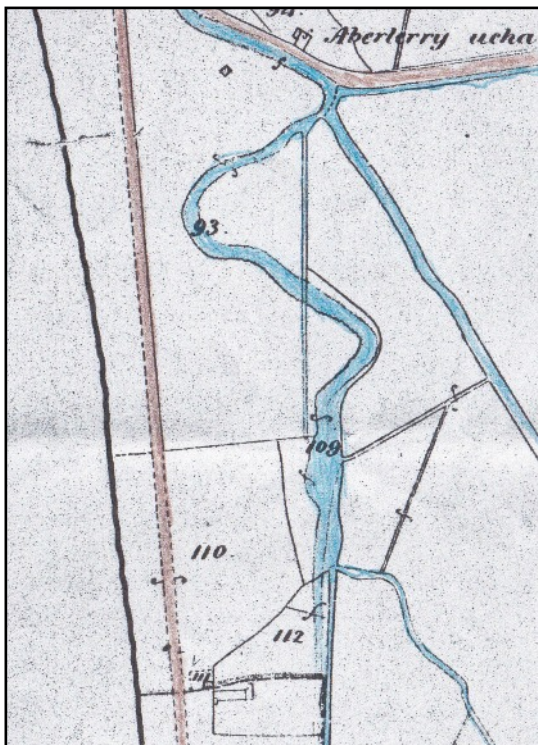
## Borth and Ynyslas Golf Club Morfa Borth

At the north end of the village beside the road to Ynyslas. The present building was begun in 1985 - built in stages - and completed in 1992. It overlooks the eighteenth hole. These golf links are said to be the oldest in Wales.



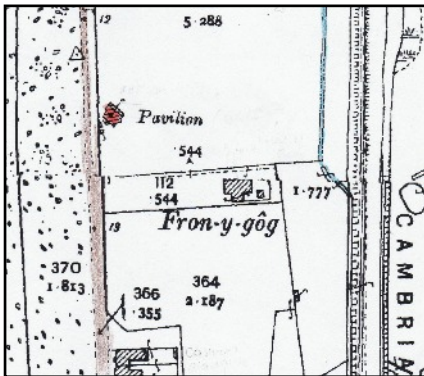
*ABOVE The Golf Clubhouse in 2015 from the road to Ynyslas.*

The Clubhouse is set back from the road overlooking the 18<sup>th</sup>. Hole. It was being built in 1985 and extended in stages. It was finished in 1992 and opened by Lord Elystan Morgan. It had to be single storey and probably has a special base designed to distribute its weight so it could float on the top of the marsh. The roofs make an interesting pattern, with hipped roofs and two prominent gables at right angles to the main run of the building, the largest with wide front and side windows overlooking the Course. The base of the building is red brick and the walls are rendered above it. The red colour is echoed in the red ridge tiles.



The land on which the Golf Clubhouse stands was originally 'waste' of the Cors Fochno bog, owned by the Crown Manor, and encroachments were rented or sold. Drained land was used as pasture. LEFT The Clubhouse stands on the south end of an eleven acre pasture field, number 93 which in 1848 was owned by William Tisley Jones and farmed by Thomas Jenkins (Tithe Apportionments Map, Llanfihangel Genau'r Glyn, Henllys Township, CYNEFIN on-line.) Across it running parallel to the sea - the black line is the high tide mark- was a road to Ynyslas which had been there for centuries, it was used in the twelfth century and was a turnpike road by the 1770s. It led to a ferry from Ynyslas to Aberdovey and was a quick way to North Wales. The road would provide good access to the golf course. The old course of the River Lerry marked in blue wound its way across the field a little further inland and a new straight drain had been dug

The golf course began with five holes, and then extended to nine holes. The masters of Uppingham School played golf on what they called 'a long strip of rough ground by the shore' during their year in Borth from 1875 to 1876. The present 18 hole course was made in 1885 (Canon Norman Potter writing in the '1950 Borth Review', National Library of Wales). The 'Golf Annual' of 1888-9 reported that a 'Club' was founded on a August 3<sup>rd</sup>. In 1892 plans of the 'Links' were being given out to holiday visitors by Mr Hohenberg the proprietor of Borth's impressive Cambrian Hotel (later Pantyfedwen and now gone). In 1893 there were 70 members. In May 1895 the Cambrian Railway Company donated a Challenge Cup not to cost more than seven guineas and if won by the same golfer two years running he could keep it. Canon Norman Potter wrote that it could be too windy to play a round, and the 13<sup>th</sup> Hole was called 'The Devil's Own' as it was approached over 'rough country' (Borth Review as before). In 1896 money was being raised to pay off a debt of £80 for the 'new Pavilion'.



*LEFT Marked in red is the Pavilion in 1904 sited alongside the road to Ynyslas, its side and back to the road. The front overlooked the first tee. It was close to the northern end of the village, and golfers would have walked there along the road. To the south was re-claimed pasture owned by Pryse-Pryse of Gogerddan and sold to build Fron-y-gog (Detail from the 25 inch Ordnance Survey Map revised in 1904 and published in 1905. Cardiganshire III.10)*

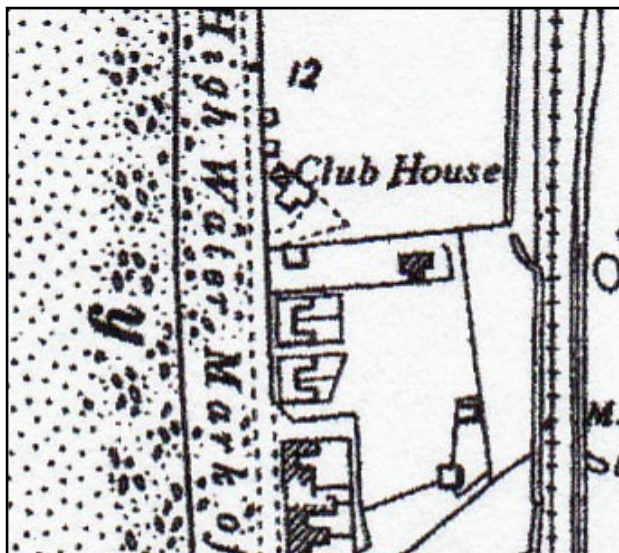
In 1910 for a tax planned but not levied, the Golf links were valued at £2,237 and £450. The owner was William Basil Loxdale Jones of Gwynfryn, Taliesin, the squire of the Gwynfryn Estate.



*LEFT This was the Pavilion from a booklet with small photographs of Borth posted in 1915. There is a man in the photograph which helps give the scale of the building which was single storey with a gable roof with an overhang at the front supported by posts providing an open verandah. This was where*

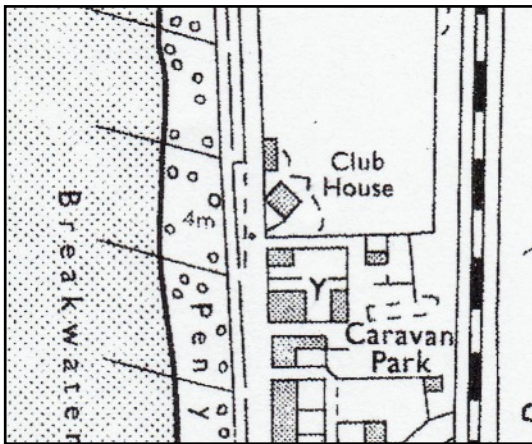
*gentlemen members smoked. The metal pipe chimney at the nearest end to the camera suggests a kitchen was that end. On the rear of the building was a lean-to. A fence enclosed the front, with a gate. Access was from a path but players had trodden a direct path to the pavilion*

*across the grass. There was a second building alongside (Photograph from 'Welsh Women at Tea'. Courtesy of Peter Fleming)*

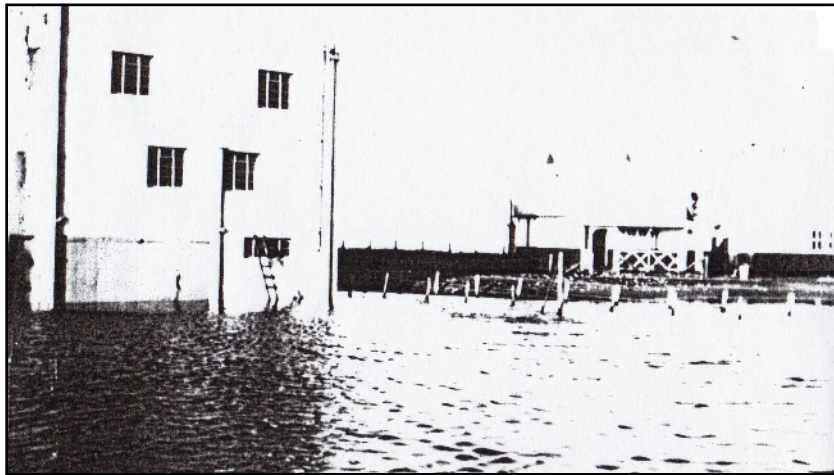


The Gwynfryn Estate still owned the Clubhouse in 1935. There was an Artisan Golf Club as well whose members worked on the Course as caddies for example, but they were only allowed inside the Clubhouse for the Christmas Party.

*LEFT The Pavilion in 1948 with a space to park cars. The Club was an attraction for visitors to Borth, and new houses were linking it to the north of the village, for example Brockhill is there and Morlais.*



*In 1984 the Clubhouse is in the same position as in 1915. It was to be moved on rollers to a new site. There was still the building alongside it aligned with the road. The Golden Sands Caravan Park had been set up. (Details from an Ordnance Survey 6 inch Map of 1904 updated to 1948, and one of 1984).*



*Brockhill is on the left and on the right is the Pavilion (clubhouse). Though this is a terrible old photocopy, it gives some idea of the side of the building opening on to the golf course. It was raised up and did not flood! The date is after 1935.*

Archifdy Ceredigion Archives  
yn cyflwyno / presents  
**Tai'r Borth / Houses of Borth**  
gan/by Beryl Lewis  
[cyf/ref ADX/1629]

Mae **Tai'r Borth** yn cynnwys dros 350 hanes sy'n ymwneud ag adeiladau unigol ac mae'r hanesion wedi'u darlunio â chyfoeth o ffotograffau, mapiau a dogfennau. Mae'r ffeiliau ar gael ar ein gwefan: <https://www.archifdy-ceredigion.org.uk/tairborth.php?lang=cy>

Hoffem ddiolch i Beryl am fod mor garedig â chaniatáu i ni rannu ei gwaith â'r gynulleidfa ehangaf bosibl.

Ceidw Beryl Lewis yr hawlfraint yn ei gwaith ac mae'r hanesion yn cael eu rhannu at ddibenion preifat ac ymchwil yn unig.

**Houses of Borth** consists of over 350 histories of individual buildings, lavishly illustrated with photographs, maps and documents. All the files are available from our website: <https://www.archifdy-ceredigion.org.uk/tairborth.php>

We would like to thank Beryl for her kindness in letting us share her work with the widest possible audience.

Beryl Lewis retains the copyright in her work and the histories are made available for private use and research only.



Cyngor Sir  
**CEREDIGION**  
County Council



Archifdy  
Ceredigion  
Archives