

THE BUILDINGS OF MOREFA BORTH

- the Marsh Harbour

Ceredigion



That part of Borth Village on a pebble bank with the sea on one side and the Cors Fochno marsh some reclaimed and the railway on the other. In the distance is the River Dyfi. Photograph Michael Lewis

Photographs and History by BERYL LEWIS

This work is for research and educational purposes only.

GLENAVON

Morfa Borth - the Marsh Harbour

The house replaced an old cottage and was built after 1910 but by 1924.

RIGHT Glenavon in 2009

This is a tall house, a generous two storeys high, with gable windows for an attic floor and a large chimney with eight flues. It is single fronted, with the door on the southern side. This is a brick building and the front walls are rendered. The windows are very interesting and appear to be sash windows - in the photograph one is open. The front door is inset a little under a gently curving low arch, and low railings enclose a narrow strip in front of the house. The building design matches its neighbours, even the shop.

BELOW RIGHT The house shares a gable for one of its dormer windows.

BELOW This may be the original geometrical pattern above the front door.



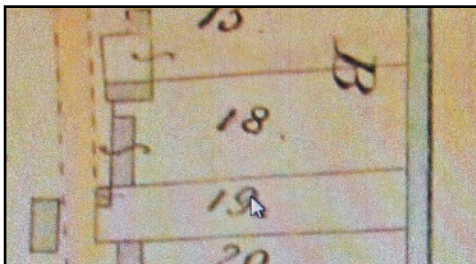
This suggests they were built at the same time, and as the plot of land on which the houses stand had just one owner in 1910 this is likely.



LEFT and RIGHT The back of the house shares a gable and a rear wing with Longmoor whose barge boards are white. The small windows of Glenavon's upper floor have the geometrical pattern which matches those at the front of the house. Rear wings of houses often had a chimney and contained the kitchen.



This house is built on the site of the northernmost of a terrace of three old cottages set back from the street which were there in 1829. The ground had been enclosed in 1824 by Evan Hughes from the pebble embankment that the Crown Manor who owned it called 'waste' because it was no use for farming. It was over half an acre, 2 rods and 7 perches (Number 28 on the map of 1829, NA LRRO 1/3060). Evan Hughes was a master mariner, captain of the sloop Liverpool Trader in 1825, and owner of 46 of her 64 shares. He owned the sloop Providence in 1838 and was the captain and was the owner of the sloop 'Friendship in 1826. He had shares in other ships and traded shares and raised mortgages on his ships. He was able to provide very well for his family.



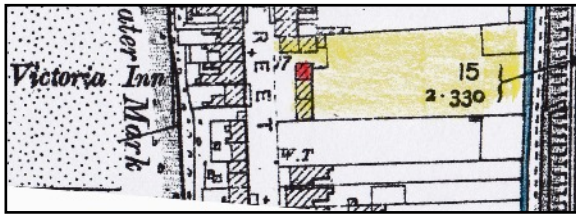
LEFT In 1848 there were new owners, John Price and Mary Lewis, and the cottages and gardens were occupied by John Davies and others. There was another cottage built on the northern end of the ground at right angles to the street. All these cottages shared the 'garden' which extended to a 'brook' of fresh water for the villagers (Detail from the Tithe apportionments

Map for Llanfihangel Genau'r Glyn, Cyfoeth Township, on-line at CYNEFIN)

Mary Lewis was a widow, born in 1786 and she had a daughter Mary. John Davies was a mariner with a wife and children.

John Price in 1861 was living in one of the cottages. He was a merchant seaman, born about 1811, and his wife Laura was from Aberdovey. Also in the cottage was a daughter Anna born about 1852 in Borth. It is not possible to find the occupiers of the other cottages. By 1871 Jane Price a widow of a mariner was there, born at Llynllwyd and elderly, aged 68, and the Census spelt her name Price. She had two unmarried sons, John aged 35 (born about 1836) and Thomas aged 34 (born about 1837). Her son John was to live in the cottage on the northern boundary alongside the High Street until the beginning of the twentieth century. There were

Elizabeth and Margaret Davies in another of the cottages. By the 1881 Census one of the cottages was empty. John Price (Pryse) was still there, aged 56 and a 'general labourer'. In 1891 he was 66 and a 'farm labourer'. In 1901 he was a 'railway labourer' aged 77. In 1911 he was still there, aged 87. He was all by himself.



LEFT In 1904 all the old cottages were still there. John Pryse's ground is marked in yellow and in red is the old cottage that was on the site of Glenavon (Detail from the 25 inch Ordnance Survey Map revised in 1904 and published in 1905).



LEFT We do not know what the other old cottages looked like but the nicely whitewashed one in the foreground of a postcard posted in 1909 was John Pryse's. We can see the walls were rubble stone with rounded stones from the beach (Postcard courtesy of Peter Fleming)

In 1910 John owned all the ground - and the three by now 81 year old cottages - no tenants are given for them - and his own cottage then called Number 4 New Street. In 1910 for a tax planned but not levied, he would have paid £2.8s, £3 gross for his cottage, but the value with the half acre was the huge sum of £475. This seems to be its value as a potential building site.

RIGHT The four houses sometime before 1945. Glenavon had a hood over its front door the same as The Lodge. The houses fitted tightly into the site of the three cottages, but were not set back from the street. If you look carefully you can just see the edge of John Pryse's cottage (Amgueddfa Ceredigion Museum).



Sometime in the 1920s the present house having been built and called Glenavon, furnished apartments with four bedrooms and two sitting rooms were advertised in The Illustrated Borth Guide, price 6d. (Aberystwyth Public Library). In October 1924 Mr and Mrs of Thomas Davies were living there when their daughter Gertrude was married (Cambrian News). Mr Davies paid the Rates for it in 1925. In 1926 an Insurance Agent, George T. Morgan gave Glenavon as his address.

Glenavon Page 4

Paying the Rates for the house in 1949 was Arthur E. Humphreys. Mr Humphreys was a valuable member of the community, in 1949 he was the secretary of the Borth 'Improvements Committee'. He was also a churchwarden at St Matthew's Church, clerk to the parish council and treasurer of the Public Hall Committee (Borth Review, National Library of Wales).

Mr A. E. Humphreys paid the rates in 1957 and until 1963 when he also had a vote for the house.

In the late 1960s Mrs Swancott was there (Electoral Registers and Rates, Ceredigion Archives)

In 1975 John Pryce's cottage was still there, but today it has gone (Historical Maps Online).

Archifdy Ceredigion Archives
yn cyflwyno / presents
Tai'r Borth / Houses of Borth
gan/by Beryl Lewis
[cyf/ref ADX/1629]

Mae **Tai'r Borth** yn cynnwys dros 350 hanes sy'n ymwneud ag adeiladau unigol ac mae'r hanesion wedi'u darlunio â chyfoeth o ffotograffau, mapiau a dogfennau. Mae'r ffeiliau ar gael ar ein gwefan: <https://www.archifdy-ceredigion.org.uk/tairborth.php?lang=cy>

Hoffem ddiolch i Beryl am fod mor garedig â chaniatáu i ni rannu ei gwaith â'r gynulleidfa ehangaf bosibl.

Ceidw Beryl Lewis yr hawlfraint yn ei gwaith ac mae'r hanesion yn cael eu rhannu at ddibenion preifat ac ymchwil yn unig.

Houses of Borth consists of over 350 histories of individual buildings, lavishly illustrated with photographs, maps and documents. All the files are available from our website: <https://www.archifdy-ceredigion.org.uk/tairborth.php>

We would like to thank Beryl for her kindness in letting us share her work with the widest possible audience.

Beryl Lewis retains the copyright in her work and the histories are made available for private use and research only.



Cyngor Sir
CEREDIGION
County Council



Archifdy
Ceredigion
Archives