

THE BUILDINGS OF MOREFA BORTH

- the Marsh Harbour

Ceredigion



That part of Borth Village on a pebble bank with the sea on one side and the Cors Fochno marsh some reclaimed and the railway on the other. In the distance is the River Dyfi. Photograph Michael Lewis

Photographs and History by BERYL LEWIS

This work is for research and educational purposes only.

GLANRHYD NUMBER ONE

This cottage was built between 1829 and 1845. It has the name 'Glanrhyd' - meaning 'by the ford' (rhyd) - because there had been a ford not far away on the lane to Ynysfergi and Brynlllys where the brook that ran at the end of the gardens behind the High Street houses crossed the lane. There is a ditch there today. This cottage would be a home for a weaver called Lewis Lewis and his family and a Borth policeman.



ABOVE *Glanrhyd Number 1 in 2008.*



It is the nearest cottage to us on this old postcard, and had a central front door, sash windows with small panes, and a fatter chimney. The walls were stone and not whitewashed. The curving whitewashed stone wall around the front would protect it from vehicles coming up the lane beside it. The 'pavement' was grass and earth.

door with a window alongside, and has a flat roof above supported by plain brackets. There is one upper window in the peak of the gable. In the back of the roof is a single dormer window on the south side.

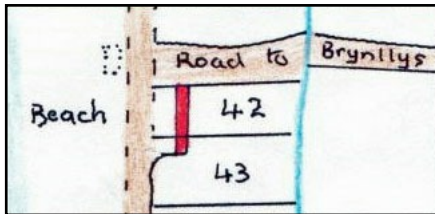
The cottage is one and a half storeys high under a gable roof. It is semi-detached being the southernmost cottage of a terrace of three cottages alongside the High Street. Dormer windows light an upper floor. The walls are rubble stone, with a few rounded pebbles from the beach - but less than in some of Borth's other old cottages. The upper section of the walls is rendered pebble dash. . Facing the street the cottage has modern downstairs windows, much larger than in the old cottage. A simple pale plaster frame is made in the render round then. All the windows and the doors of this cottage have frames of this kind. The front of the cottage has a very narrow garden area, now hard standing, enclosed by a low rendered wall. This cottage has its front door at the side and it opens directly on to a cobble stone pavement beside the lane to Brynlllys. It is a modern



At the back is a single storey extension with a flat roof. The back door matches the front door. All these are modern. There is a small back garden and also a fenced off parking area with a timber garage.

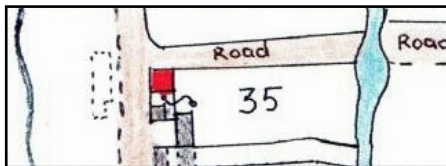
By 1845 the cottage was built and had been taken into the plot with the row of cottages set back from the street. Lewis Lewis owned all the

cottages and the land. All the cottages would become homes for his family. Lewis Lewis was a weaver, and middle aged when this cottage was built. He was 50 in 1841 and was born about

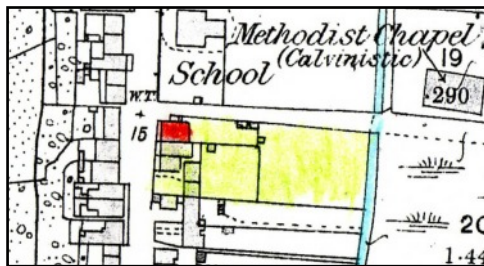


In 1829 the cottage was not there yet, and the lane to Brynlllys was much wider. (NA LRRO 1/3060)

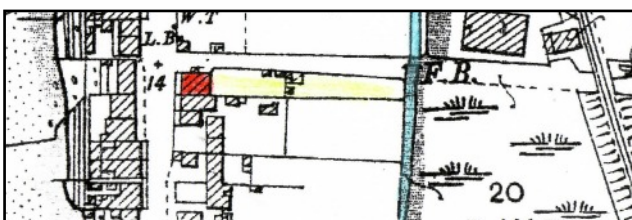
1791 in Llandre. His wife was the same age, and they had children Catherine, Evan, Lewis and Margaret. In Number One was a member of the family, Eleanor, a local girl, born in Morfa Borth, who had married a Lewis mariner who was probably a son of the weaver. She had sons Lewis, David and John. They all went to sea. Eleanor was a widow by the 1871 Census, and was still living in the cottage at the 1881 Census. A daughter had wed a James, and in the cottage was a grandson Llewellyn James Lewis.



LEFT Lewis the weaver's cottage was on this map in 1845, it is marked in red. (Number 35) The ford (rhyd) was marked too. (Tithe Apportionments Map of Llanfihangel Genau'r Glyn, Cyfoeth Township. This detail is copied from it. NLW and Cynefin on-line)



LEFT On the 25 inch Ordnance Survey Map of 1888, surveyed in 1886 the cottage, coloured red, is quite a substantial building - much deeper front to back than the old cottage, as it is today. Its garden stretched down to the brook in two sections, with small buildings. There would have been a Ty Bach and possibly a pig sty. As today the cottage had a narrow front garden. The Lewis land is marked in yellow.



LEFT On the 25 inch Ordnance Survey Map of 1905 revised in 1904 it has its own long narrow garden, and there is a new small building in the furthest section.

Number One Glanrhyd Page 3

In 1891 at the Census David James, a widowed farm labourer aged 70 was in the cottage with Eliza James Lewis, his daughter, a mariner's wife. Also a baby grandson, John James Lewis. Eliza James Lewis moved next door, and at the 1901 Census a 63 year old widow and laundress, and a Welsh speaker called Jane Davies was in the cottage.

The Lewis family continued to own the cottage. In 1910 David Lewis who was living in Barry owned the cottage. For a valuation for a tax planned but not levied this cottage was valued at £76. 1s. There would have been £4 to pay, £6. 10s. gross. There was a tenant there, Richard Griffiths who was Borth's police constable. (Ceredigion Archives and Map at the National Library of Wales). He was middle aged, and was born in Newcastle Emlyn. His wife Eleanor was born in Aberayron. They had had two children, but they were not in the cottage at the Census. The 1911 Census listed the cottage with 4 rooms, but the valuation suggests that the extension on the back had made it more valuable than other four roomed cottages. Sculleries for example were not counted. The place was then called 'Glan Rhyd Cottage'. In 1925 Borth's Methodist Chapel owned the cottage, and paid the Rates. Richard Griffiths was living there, and Miss Griffiths gave a recipe for making tasty lemonade for a Recipe book published by the Cambrian News in support of St Matthew's Church. Mr Griffiths owned the cottage in 1934 and 1938, and David Morgan was living there in 1934.

Richard and Eleanor Griffiths had votes at the General Election of 1945, as did Magdalen Bryan, and Eleanor Griffiths paid the rates in 1949. Possibly Richard had died.

In 1963 Mrs Florence Louisa Quant paid the rates, and she had a vote for the cottage as did Raymond P. Quant and Michael Henry Quant. (Ceredigion Archives).

Today modern brick bungalows have been built on the former land of this cottage.

*The stonework at the side of this cottage has some rounded stones.
(February 2015).*



Archifdy Ceredigion Archives
yn cyflwyno / presents
Tai'r Borth / Houses of Borth
gan/by Beryl Lewis
[cyf/ref ADX/1629]

Mae **Tai'r Borth** yn cynnwys dros 350 hanes sy'n ymwneud ag adeiladau unigol ac mae'r hanesion wedi'u darlunio â chyfoeth o ffotograffau, mapiau a dogfennau. Mae'r ffeiliau ar gael ar ein gwefan: <https://www.archifdy-ceredigion.org.uk/tairborth.php?lang=cy>

Hoffem ddiolch i Beryl am fod mor garedig â chaniatáu i ni rannu ei gwaith â'r gynulleidfa ehangaf bosibl.

Ceidw Beryl Lewis yr hawlfraint yn ei gwaith ac mae'r hanesion yn cael eu rhannu at ddibenion preifat ac ymchwil yn unig.

Houses of Borth consists of over 350 histories of individual buildings, lavishly illustrated with photographs, maps and documents. All the files are available from our website: <https://www.archifdy-ceredigion.org.uk/tairborth.php>

We would like to thank Beryl for her kindness in letting us share her work with the widest possible audience.

Beryl Lewis retains the copyright in her work and the histories are made available for private use and research only.



Cyngor Sir
CEREDIGION
County Council



Archifdy
Ceredigion
Archives