

THE BUILDINGS OF MOREFA BORTH

- the Marsh Harbour

Ceredigion



That part of Borth Village on a pebble bank with the sea on one side and the Cors Fochno marsh some reclaimed and the railway on the other. In the distance is the River Dyfi. Photograph Michael Lewis

Photographs and History by BERYL LEWIS

This work is for research and educational purposes only.

GLANABER

Morfa Borth - the Marsh Harbour

Formerly part of Alma Place, and on the east side of the High Street. The home of David Jenkins, a master mariner and his descendants, then of another master mariner. More recently called Lerri Dale.



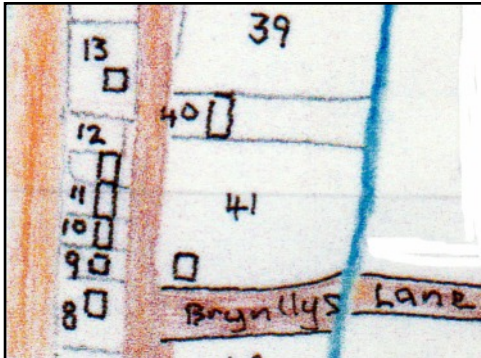
LEFT Glanaber in June 2009.

This house is the southernmost of a pair of single fronted, two storey houses under a gable roof parallel to the street. There are roof lights and small windows in the gable end for an attic floor. The chimney is rubble stone, and on the south side of the roof. The walls are probably rubble stone too. Today they are rendered and the ground floor at the front has a pattern copied from ashlar masonry. There is decoration round the window above the front door of pilaster strips with a prominent keystone which has a random pattern on it. There is a diamond shape decorating the pilaster strips. The front door has the same patterns around it in the plaster, and over the door is a protruding moulding exactly like that of Alma's next door. This suggests the two houses may have been built at the same time. All the windows have modern frames, and the bay windows are very plain with no plaster decoration. The front door is wooden and opens directly on to the street.

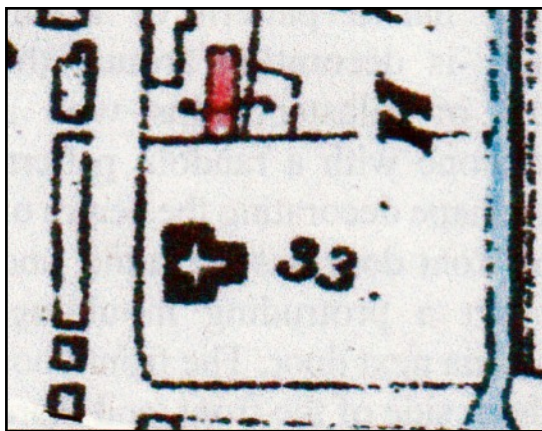


LEFT The pair of houses.

The ground on which the house was built was the stone embankment built up by the sea. The road was very old and a quick way to North Wales via a ferry across the River Dovey. It was a turnpike road by the 1770s.



LEFT A narrow plot of just four perches (30 perches make a quarter of an acre) on the left and numbered 40 on this detail from a map in watercolour of 1829 was ground owned by the Crown Manor in between the main street and a brook - now a ditch. It was enclosed by the mariner David Jenkins in 1825 and by there were some cottages on it. However the ground beside the road where Alma and Glanaber would be built is empty (Detail after Map NA LRRO 1/3060)

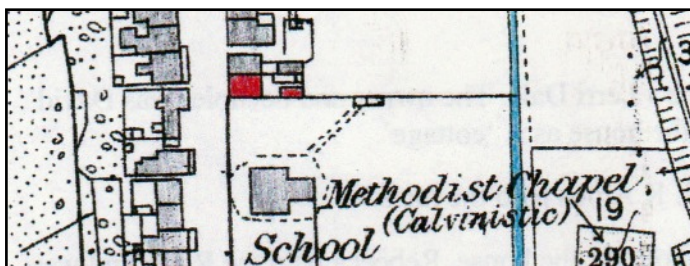


LEFT David Jenkin's cottages in 1848 marked in red. The Church had built a National School on Number 33 next door. No Alma or Glanaber yet (Detail from the Tithe Apportionments Map for Llanfihangel Genau'r Glyn, Cyfoeth Township).

Alma and Glanaber were built by 1861. I could not find them in the 1851 Census but they were there in the 1861 Census, then three homes with three Jenkins families living next to the school. In one was Anne Jenkins born in 1816 with a daughter Ann born about 1848. In another was Elizabeth Jenkins, a widow aged 67, born in borth about 1794. In the third house or cottage was Anne Jenkins born in Glanwern about 1817, with a daughter Mary born about 1844. The two Anns were wives of the master mariner brothers, David 1814 - 1905 and John Jenkins 1820 to 1878. They were the sons of the mariner David Jenkins and his wife Eleanor (Parish Register).

The address for future Census for Alma and Glanaber were 'Alma Place'. Alma was a battle in the Crimean War in September 1864 with a victory for the British and French, it took place close to a River Alma.

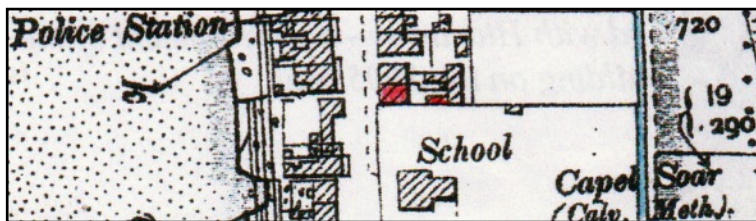
In the summer of 1871 the Cambrian News reported holiday visitors staying in a house in Alma Place for six weeks. They were mostly from Oswestry and probably came on the train (Borth Station opened in 1863). Their landlord was Captain Jenkins.



LEFT Glanaber in 1886 marked in red, with possibly part of an old cottage behind it. There was a small yard behind the house (Detail from a 25 inch Ordnance Survey Map surveyed in 1886 and published in 1888 - Cardiganshire NW)

Visitors staying in 1880 had Mrs A. Jenkins as their landlady and her address was 3 Alma Place - probably Glanaber. This would be the present house with plenty of room for holiday visitors. Mrs Anne Jenkins had a son David born in 1840 and already a master mariner, a daughter Ann born in 1849 and a son Thomas aged 17 born about 1854. Their master mariner father was away at sea.

By the 1891 Census we have some more information about the family living in Glanaber. Captain David Jenkins was at home, by then retired and aged 76, he spoke both Welsh and English. He was a Borth man. His wife Ann was also local and spoke Welsh. Their daughter Ann was 39 and had not married. She too was born in Borth about 1852. Captain David was still there in 1911 aged 86. His wife had died and he was looked after by his daughter Ann. He died in 1905 and his funeral was at the Garn Chapel in Bow Street. This family like so many Borth families were chapel-goers.



LEFT In 1905 Glanaber is marked in red and there was a new building built across the rear of the garden as Ty Bach is today. Marked in blue was a brook with water from the tail

race of the Glanlerry Mill, water from the River Leri and from some small streams. Today it is a ditch (Detail from a 25 inch Ordnance Survey Map revised in 1904 and published in 1905 -

Cardiganshire NW).



LEFT An old postcard shows Alma on the far right and Glanaber with a hipped roof and finial over its upper bay window. It had sash windows. The front of the school can be seen next door.

(Picture courtesy of the Amgueddfa Ceredigion Museum)

Glanaber Page 4

In 1910 for a tax planned but not levied, the Jenkins family still owned Glanaber, but living there was John B. or John D. Jones, a worker in the merchant marine. The house still with no name and described as a 'cottage' was valued at £130. It was a decent sized house as the 1911 Census listed it with six main rooms.

In 1925 the house was called 'Lerri Dale' and the owner and occupier was David Hughes. The Council still described it as a 'cottage'.

In 1934 it had the name Glanaber and R. K. Amos paid the rates.

In 1945 Rebecca and David Amos had votes for the house at the General Election. Rebecca was the owner and was still paying the rates in 1957 (Electoral Registers and Rates, Ceredigion Archives).



LEFT The house, Ty Bach now standing behind Alma and Glanaber'. Long extensions from both of them reach all the way to this house.

BELOW The ground plan today a detail from a modern Council Map (Map by courtesy of Councillor Ray Quant who provided it for research for a local event).



Archifdy Ceredigion Archives
yn cyflwyno / presents
Tai'r Borth / Houses of Borth
gan/by Beryl Lewis
[cyf/ref ADX/1629]

Mae **Tai'r Borth** yn cynnwys dros 350 hanes sy'n ymwneud ag adeiladau unigol ac mae'r hanesion wedi'u darlunio â chyfoeth o ffotograffau, mapiau a dogfennau. Mae'r ffeiliau ar gael ar ein gwefan: <https://www.archifdy-ceredigion.org.uk/tairborth.php?lang=cy>

Hoffem ddiolch i Beryl am fod mor garedig â chaniatáu i ni rannu ei gwaith â'r gynulleidfa ehangaf bosibl.

Ceidw Beryl Lewis yr hawlfraint yn ei gwaith ac mae'r hanesion yn cael eu rhannu at ddibenion preifat ac ymchwil yn unig.

Houses of Borth consists of over 350 histories of individual buildings, lavishly illustrated with photographs, maps and documents. All the files are available from our website: <https://www.archifdy-ceredigion.org.uk/tairborth.php>

We would like to thank Beryl for her kindness in letting us share her work with the widest possible audience.

Beryl Lewis retains the copyright in her work and the histories are made available for private use and research only.



Cyngor Sir
CEREDIGION
County Council



Archifdy
Ceredigion
Archives