

THE BUILDINGS OF MOREFA BORTH

- the Marsh Harbour

Ceredigion



That part of Borth Village on a pebble bank with the sea on one side and the Cors Fochno marsh some reclaimed and the railway on the other. In the distance is the River Dyfi. Photograph Michael Lewis

Photographs and History by BERYL LEWIS

This work is for research and educational purposes only.

GLAN NANT

Morfa Borth - the Marsh Harbour

The southern end cottage in a terrace, called Railway Terrace in 1891 and St David's Place in 1881. By 1868 and until 1927 it was a butcher's shop and home of the Ody family. Today it is a private house.



LEFT This photograph of the cottage was taken in June 2009. In the back ground in disrepair was the former slaughterhouse.

This cottage is a bare two storeys high, sharing a stone chimney with Rose-land next door, and with a brick chimney of its own on the other end of the roof. The cottage shares the roof height of Rose-land too, but it is wider. The walls are rendered, and the windows are modern but have the pattern of small panes associated with old cottages. The front door is on the northern side of the front,

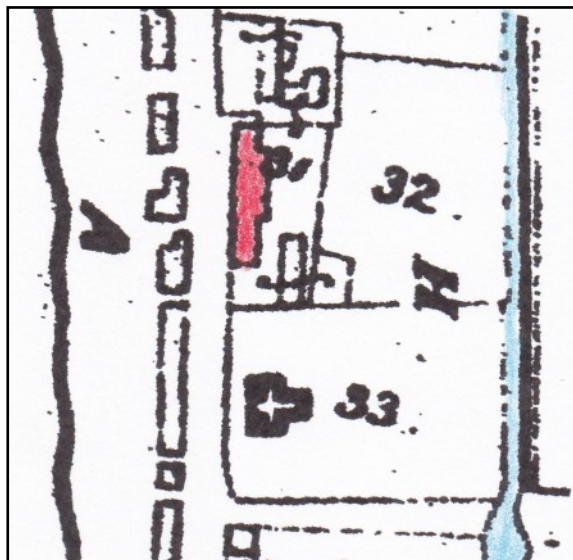
and the lower window is large - much larger than expected in an old cottage. There is access to the rear with enough space between Glan Nant and its neighbour 'Alma' to drive a vehicle through.



LEFT The extension at the rear is two storeys and almost the width of the house. In the foreground is the remains of the former slaughterhouse and then grassland. The photograph was taken in 2018.

The ground on which the cottage was built was the stone embankment built up by the sea. The road was very old and a quick way to North Wales via a ferry across the River Dovey. It was a turnpike road by the 1770s. A

three quarter acre plot on the stone embankment owned by the Crown Manor had been enclosed by 1818. The person's name on their map sadly is illegible. There were no cottages on it in 1829 (Detail from a Crown Manor Map of 1829, National Archives LRRO 1/3060)



LEFT By 1848 a terrace of cottages, 31, marked in red, was on that site and the owner was David Hughes, a mariner. They had been built after 1832, and stood on half an acre of ground. David Hughes also had nearly three quarters of an acre of 'garden' (2 rods, 38 perches). (Tithe Apportionments Map, Llanfihangel Genau'r Glyn, Cyfoeth Township. On-line at Cynefin).

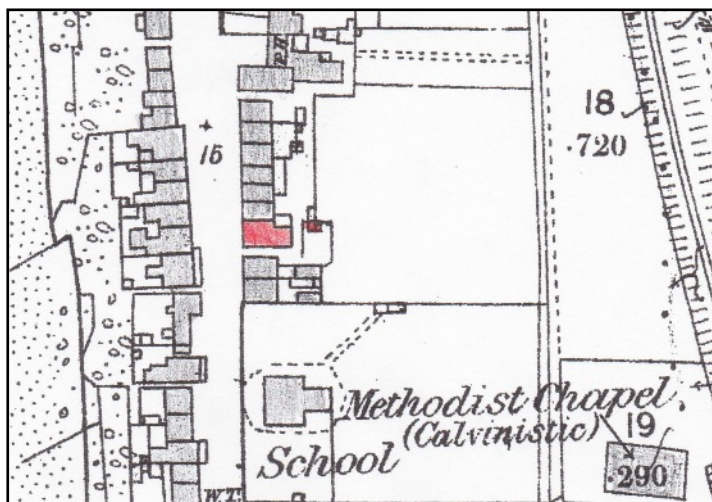
The name for the row of cottages was once St David's Terrace. The Diocese of St David owned the big site 33 close by, and had a Church (National) School there by 1842 (replaced today by the Meddygfa). John Ellis writing a history of Borth in 1930, and whose great aunt was born in Borth in 1809 and lived there all her life and must have supplied him with some information, wrote that the southernmost cottage now Glan Nant was the shop of William Hughes Ody, a butcher, and all the remaining cottages

belonged to an enterprising mariner David Hughes. In 1846 he had built a ship, the 'Catherine and Ellen' on the beach across the road. His family set up the Railway Inn which began in 'Brookfield' and eventually moved next door and expanded, so the history of the terrace is connected to this family.

Like the oldest Borth cottages they were set back a little bit from the street. It is not possible to find the occupants of Glan Nant in the early Census.

By 1868 a family originally from Aberstwyth and then from Goginan had moved into the cottage and set up a butcher's shop there (Slater's Directory of South Wales, Ceredigion Archives). Mary Ody was a widow, and local, born in the parish about 1818. She was acting as housekeeper for her son William Hughes Ody, born in Aberystwyth about 1852, who was the butcher. In 1868 he was just sixteen years old. There was a younger son Thomas Hughes Pryse Ody, born in Goginan about 1860. Another son, Richard Hughes Ody had died in 1869 aged 12 (Llandre Churchyard tombstone). William's second name 'Hughes' was his mother's name before she married in Aberystwyth in 1848 and was possibly a connection to David Hughes the owner of the place in 1848. Hugh and Mary Hughes were witnesses at the wedding. She had been born in Taliesin. Her late husband, Thomas Ody - an Englishman, born in Lydford Wiltshire, had been a shopkeeper in Druid Village Goginan. He had also been a local Wesleyan preacher. In 1861 at Goginan the family had a dressmaker daughter, Anne of 18, unmarried, and sons William 9, John 7, Richard 3 who was to die aged only 12, and Thomas Price Ody, 2. The shop in Goginan was flourishing - they could afford a 'shopkeeper's assistant, James Pope aged 17.

By 1871 Thomas Ody had died, and his widow Mary had moved to Glan Nant. The terrace was then called 'St David's Place'. Mary Ody died on 31st January 1877 aged 60.



LEFT Glan Nant marked in red was the largest cottage in the terrace and had a substantial wing at the back. At that time it shared a garden with the other cottages, all owned by the Hughes family of the Railway Inn. The small building at the back may have been an outside lavatory (Detail from the 25 inch Ordnance Survey Map surveyed in 1886 and published in 1888, Cardiganshire NW III.10)

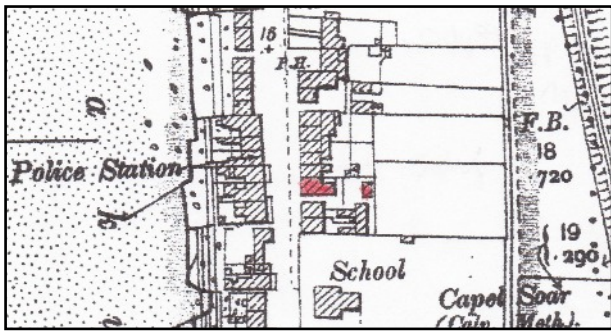
In the 1881 Census there was a domestic servant in the house, 25 year old Mary Lewis from Talybont, looking after William Hughes Ody who had not married. Living there too was younger brother Thomas aged 21 who had been a pupil teacher. The family spoke both Welsh and English.

William in 1883, aged 31 was a useful member of the community At a public meeting in response to storm and flooding damage to Borth, the Cambrian Times reported that he was one of 12 men chosen to 'wait upon the Council's Sanitary Authority'. In October 1899 he was the vice-chairman of the parish council'.

The business must have flourished. In 1891 a butchery assistant had been taken on and was living in the house. He was a local lad, Hugh Hughes aged 16, and the place was now called Railway Terrace as the enlarged Railway Inn stood at the northern end of the terrace.

William Ody had a horse and trap to deliver his meat. At the Sale of his property after his death there was a bay mare of the 'Vanner' type, a light draught gypsy horse, brown in colour with a black mane, black ears, a black tail. with feathered black legs and powerful muscles. In his outbuildings was a four stall stable with a loft above, a lean to cart house and a slaughter house. (CRO ADX 376/6)

In 1901 William Ody was still single, looked after by Mary Lewis. There was a new grocery assistant, Thomas Leri Jenkins, born near Liverpool, at Lane, Widnes



LEFT In 1904 there was a building at the back, his slaughter house, inside an enclosure of 150 feet by 86 feet. William Ody was not only a butcher, but also a cattle dealer. ((A detail from the 25 inch Ordnance Survey Map revised in 1904 and published in 1905 Cardiganshire NW III.10 and Ceredigion Archives ADX 376/6)

At a valuation for a tax planned but not levied in 1910 William Ody owned the place, still described as a 'cottage'. However it was now valued at £153 - much more than the rest of the terrace - for example next door (Roseland) was £70 and the remaining cottages between £20 and £51. His butchery business and outbuilding would make the place valuable. He needed some pasture for his mare, and owned some land by Osprey House (now Meirion), and was also the tenant and occupier of 28 acres, 1 rod 27 perches of agricultural land at Min y don - the owner was the estate of the late Mr Gregson who had owned and developed much of Ynyslas. On this land at his death William Ody had 55 cross-bred ewes due to lamb as from February 20th and one suffolk ram and one cross-bred ram.

In 1911 the Census listed just four rooms for the house. This would not include a scullery nor the room used for the shop.

For the Rates in 1925 the house had no name, the address was Railway Place, and William Ody paid a rate of f5 19s. (£7 gross) for his house and premises.

William Hughes Ody died on January 27th 1927 aged 76 and is buried at Llandre. His brothers inherited his property, John Ody was a retired paymaster, and Thomas Price Ody a retired estate agent. William's property was valued at £7,952.15s.6d (On line Index of Wills and Probates).

In the advertisement for a Sale of his property in March 1927 we get a picture of his home. On the ground floor was the shop and a kitchen and scullery. Above were three bedrooms. The wash house and lavatory were outside.

His furniture comprised brass and iron bedsteads, toilet tables, a commode, mahogany and other chests of drawers, bedroom chairs, a very fine oak linen press, various books, antique oak chairs, a settle, a book case, an oak grandfather clock, old jugs, willow pattern plates, an oak corner cupboard, a mahogany Pembroke table, a sea chest, a gentleman's bicycle and the usual kitchen utensils.

Out door effects comprised a chaff cutter, hand trucks, a corn bin, a grindstone, ladders, a set of harness, a butcher's trap, about two tons of prime meadow hay, some builder's material, 85 drain pipes, bricks, a wheel barrow, poles and sundry timber and his bay mare. His piece of land by Meirion which

fronted the high street by 18 foot, and was 86 feet deep, was listed as 'a valuable building plot'. (On it today is the 'Amusements' building') (CRO ADX 376/6)

Glan Nant was sold in 1927 and it seems that an Evans family took over the business. In 1934 Edward R. Evans paid the rates for a house on Railway Terrace with a shop, garage and slaughter house.



ABOVE Glan Nant with young Gethin Evans and Mr Harry Evans. Meat was hung outside the shop (Photograph courtesy of Y Tincer).

In 1945 Mary Evans had a vote at the house and the Rates of 1949 listed her as the owner. The house had its present name, Glan Nant.

With votes for Glan Nant in 1963 were William R. and Catherine L. Morgan (Electoral Registers and Rates, Ceredigion Archives).

A map of 1975 shows a much bigger slaughterhouse at the back with direct access to the street (Historical Maps On-line). This would be the brick building in the photograph on page 1.

RIGHT The Sale of William Ody's Estate. It is a rare glimpse inside a home that had been established by 1868 (Ceredigion Archives ADX 376/6)

THE ESTATE OF MR. W. H. ODY, Deceased.

BORTH.

Important Sale of Freehold Business Premises, Suitable Outbuildings, a convenient Field adjoining thereto, a Valuable Building Plot, Antique Household Furniture, and Outdoor Effects; Also a Bay Mare.

MR. EMLYN ABRAHAM, A.A.I.,

Has been favoured with instructions to Sell by Auction

ON WEDNESDAY, MARCH 2nd, 1927,

A QUANTITY OF

HOUSEHOLD FURNITURE

On the Premises, Situate at **RAILWAY PLACE, BORTH,**

COMPRISING:—Brass and Iron Bedsteads; Toilet Tables; Commode; Mahogany and other Chests of Drawers; Bedroom Chairs; A VERY FINE OAK LINEN PRESS; Miscellaneous Books; Antique Oak Chairs; Settle; Book Case; Oak Grandfather's Clock; Old Jugs; Willow Pattern Plates; Oak Corner Cupboard; Mahogany Pembroke Table; Sea Chest; Gent's Bicycle, and the usual Kitchen Utensils.

THE OUT-DOOR EFFECTS

INCLUDE:—Chaff Cutter; Handtrucks; Corp Bin; Grindstone; Ladders; Set of Harness; Butcher's Trap; about Two Tons of Prime Meadow Hay; a Quantity of Builders' Material comprising:—Eighty-five Drain Pipes; Bricks; Wheel Barrow; Poles and Sundry Timber, etc.; BAY MARE (Vanner Type).

ON VIEW DAY PRIOR TO SALE. SALE TO COMMENCE AT 11 a.m. PROMPT.
TERMS: CASH DAY OF SALE.

THE VALUABLE

FREEHOLD PROPERTY AND LAND

To be Sold by Auction at the **PUBLIC HALL, BORTH,**

at 3 p.m., subject to conditions to be then read or produced, viz:—

LOT 1.—The Desirable Shop Premises and Valuable good will, together with commodious Outbuildings, known as

RAILWAY PLACE, BORTH.

Containing the following Accommodation, on Ground Floor:—SHOP, KITCHEN and SCULLERY. On First Floor:—THREE BEDROOMS. Outside:—WASH-HOUSE and LAVATORY.

THE OUTBUILDINGS comprise:—A Well-Fitted SLAUGHTER HOUSE, 4, STALL STABLE with Loose Box and LOFT over.

The late Mr. W. H. Ody, conducted a Highly Successful Butchering and Cattle Dealing Business for the past 50 years and the Good-will thereof will be included in the Sale. The Purchaser will be required to take over at the Auctioneer's Valuation, the Trade Fixtures, Fittings, Utensils and Fifty-five Cross-Bred Ewes due to Lamb as from February 20th, one Suffolk Ram and one Cross-Bred Ram.

LOT 2.—The FIELD and LEAN-TO CART HOUSE in rear and adjoining Lot 1. Approximately 150 ft x 86 ft.

LOT 3.—The VALUABLE BUILDING PLOT commanding an important Site Value with a frontage of 38 ft to Hight Street, and a depth of 47 feet or thereabouts.

VACANT POSSESSION OF ALL LOTS WILL BE GIVEN ON COMPLETION.

Further Particulars may be obtained of the Solicitors—Messrs. SMITH, DAVIES and JESSOP, Market Chambers, Aberystwyth, Tel. 50, or of the Auctioneer at his Estate Office, Cambrian Chambers, Aberystwyth, Tel. 164.

Archifdy Ceredigion Archives
yn cyflwyno / presents
Tai'r Borth / Houses of Borth
gan/by Beryl Lewis
[cyf/ref ADX/1629]

Mae **Tai'r Borth** yn cynnwys dros 350 hanes sy'n ymwneud ag adeiladau unigol ac mae'r hanesion wedi'u darlunio â chyfoeth o ffotograffau, mapiau a dogfennau. Mae'r ffeiliau ar gael ar ein gwefan: <https://www.archifdy-ceredigion.org.uk/tairborth.php?lang=cy>

Hoffem ddiolch i Beryl am fod mor garedig â chaniatáu i ni rannu ei gwaith â'r gynulleidfa ehangaf bosibl.

Ceidw Beryl Lewis yr hawlfraint yn ei gwaith ac mae'r hanesion yn cael eu rhannu at ddibenion preifat ac ymchwil yn unig.

Houses of Borth consists of over 350 histories of individual buildings, lavishly illustrated with photographs, maps and documents. All the files are available from our website: <https://www.archifdy-ceredigion.org.uk/tairborth.php>

We would like to thank Beryl for her kindness in letting us share her work with the widest possible audience.

Beryl Lewis retains the copyright in her work and the histories are made available for private use and research only.



Cyngor Sir
CEREDIGION
County Council



Archifdy
Ceredigion
Archives