

# THE BUILDINGS OF MOREFA BORTH

- the Marsh Harbour

Ceredigion



That part of Borth Village on a pebble bank with the sea on one side and the Cors Fochno marsh some reclaimed and the railway on the other. In the distance is the River Dyfi. Photograph Michael Lewis

Photographs and History by BERYL LEWIS

*This work is for research and educational purposes only.*

# FOUR WINDS and GREENFIELD

Morfa Borth

Two modern bungalows on the south side of the lane to Borth Zoo and on the High Street side of the railway level crossing.

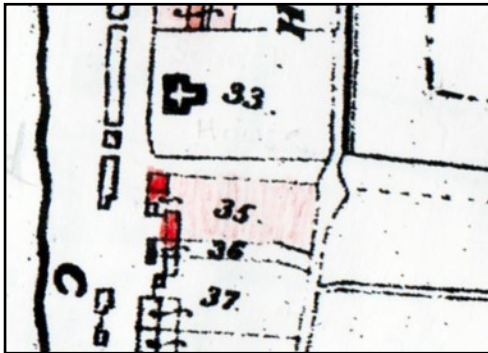


*ABOVE Greenfield in 2019 which opens on to the street and has a wooden garage beside it.*

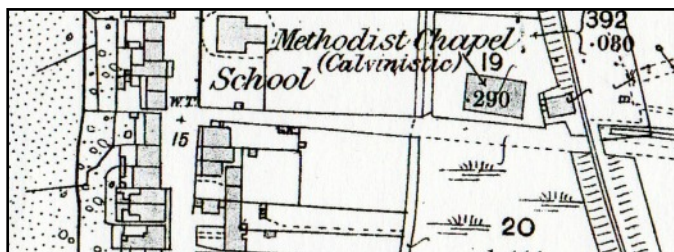


*ABOVE Four Winds, and beyond it is its large brick workshop and garage building with rendered walls, a corrugated metal roof, and plenty of space for parking in between. The bungalow has an extension on the east side with its front door. Both these bungalows were built by 1963.*

The ground on which these are built is reclaimed Cors Fochno marsh.

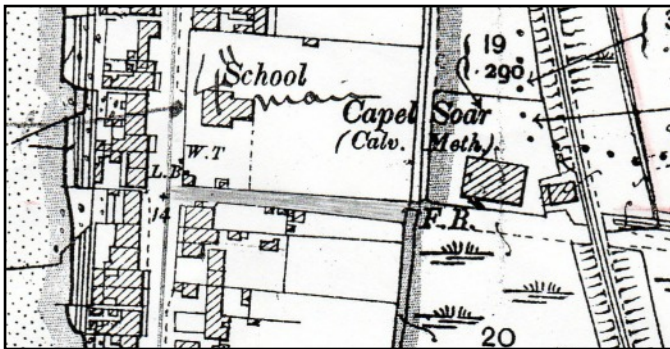


LEFT In 1848 before the railway came, this ground, Number 35, was Lewis Lewis's 'houses and gardens' - they are coloured red, and measured nearly half an acre (1 rod 23 perches). He lived in what is now Glanrhyd Number 1, and was a weaver. He owned the ground down to the brook (ditch). He was making a good living - he was the only weaver in the village and would have been weaving woollen cloth (Tithe Apportionments Map, Llanfihangel Genau'r Glyn, Cyfoeth Township online at CYNEFIN).



LEFT In 1886 Glanrhyd Number 1 ended, and there was a square enclosure or small field down to a brook with water for the village. This was the former weaver's land, and so were the cottages beside the High Street. There was a ford across the lane (Detail from the 25 inch Ordnance

Survey Map surveyed in 1886 and published in 1888, Cardiganshire NW).



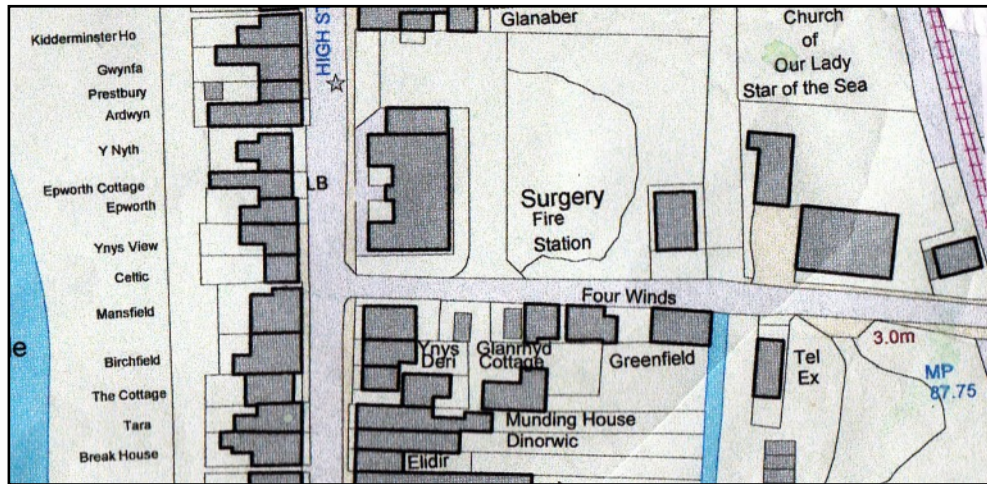
LEFT In 1905 the square enclosure had been divided, making a long narrow enclosure at the laneside behind Glanrhyd Number 1's garden. This which became narrower and ended at the brook (now a ditch) which then still carried water, as a footbridge had been built to cross it. There were tiny buildings on the piece of ground - possibly for pigs or

chickens (Detail from the 25 inch Ordnance Survey Map revised in 1904 and published in 1905, Cardiganshire NW).

In 1910 for a tax planned but not levied the plot was 304. It was owned with one of the Cottages on the High Street by T. S. Morgan of Nant Carro and the tenant of both the ground and the cottages was David Davies. Both were valued at £86, and the tax and later rate to be paid was £3.8s, gross £4.5s. David Davies born about 1871 at Llanbadarn Fawr, and his wife Margaret Anne and their children lived at 'Glanrhyd House'. He was a 'general carrier'.

Morgan and Ethel Davies paid the rates for Four Winds in 1963. Greenfield was called Avenue Bungalow by the Council to begin with, but in 1963 it had its name Greenfield and paying the rates was Mrs N. J. Edwards. She was the mother of the builder, who built it for her.

Greenfields and Four Winds now fill their ground, the backs of the bungalows on the boundary.



*ABOVE Today the bungalows fit tightly into the space between the road and their rear boundaries. The ditch - the former brook is still there and is needed for drainage. Today there is no ford but water in the ditch is taken under the road (Detail from a Council Map courtesy of Councillor Ray Quant who provided it for research for a village event).*

Archifdy Ceredigion Archives  
yn cyflwyno / presents  
**Tai'r Borth / Houses of Borth**  
gan/by Beryl Lewis  
[cyf/ref ADX/1629]

Mae **Tai'r Borth** yn cynnwys dros 350 hanes sy'n ymwneud ag adeiladau unigol ac mae'r hanesion wedi'u darlunio â chyfoeth o ffotograffau, mapiau a dogfennau. Mae'r ffeiliau ar gael ar ein gwefan: <https://www.archifdy-ceredigion.org.uk/tairborth.php?lang=cy>

Hoffem ddiolch i Beryl am fod mor garedig â chaniatáu i ni rannu ei gwaith â'r gynulleidfa ehangaf bosibl.

Ceidw Beryl Lewis yr hawlfraint yn ei gwaith ac mae'r hanesion yn cael eu rhannu at ddibenion preifat ac ymchwil yn unig.

**Houses of Borth** consists of over 350 histories of individual buildings, lavishly illustrated with photographs, maps and documents. All the files are available from our website: <https://www.archifdy-ceredigion.org.uk/tairborth.php>

We would like to thank Beryl for her kindness in letting us share her work with the widest possible audience.

Beryl Lewis retains the copyright in her work and the histories are made available for private use and research only.



Cyngor Sir  
**CEREDIGION**  
County Council



Archifdy  
Ceredigion  
Archives