

THE BUILDINGS OF MOREFA BORTH

- the Marsh Harbour

Ceredigion



That part of Borth Village on a pebble bank with the sea on one side and the Cors Fochno marsh some reclaimed and the railway on the other. In the distance is the River Dyfi. Photograph Michael Lewis

Photographs and History by BERYL LEWIS

This work is for research and educational purposes only.

ELIDIR

Built after 1910 and in existence by 1925. It belonged then to the owner of Dinorwic, Captain Thomas Williams who lived next door, who may have built it. He had put either a member of his family or a tenant in Elidir. Terry Davies writes about Captain Williams in his *Borth A Maritime History*, page 127.



Elidir in 2015.

The house is single fronted and in a terrace of three under a gable roof parallel to the High Street. It has two storeys, with a dormer window allowing another floor under the roof. Though not very wide this building has considerable depth. The walls are brick and rendered and there is a decorative use of bricks under the eaves. Under the upper window is a line of moulding linking all three houses together. Below it the wall has a pattern of rusticated masonry. The upper front window is modern and has a frame in the rendering with a keystone. The ground floor has a square bay window with modern framing and a hipped roof. The dormer window is small, has a modern frame and may be original. The chimney is shared with Dinorwic and has four chimney pots so there were plenty of warm rooms. The front door is on the south side of the front, and has a moulded top edge supported by pilasters with a simple capital either side of the front door. These match both Dinorwic and Munding next door. Quoins are drawn in the rendering on the outer edge of the

house. There is a narrow walled front garden with a plain railing. Some care has been taken with the details in the rendering of the three houses.



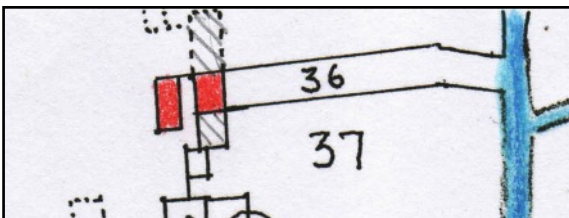
LEFT The three houses in the terrace, Munding house in the foreground, Dinorwic and then Elidir. The chimneys are red brick.



ABOVE The rear of the three houses from the garden of Dinorwic in the centre of the drawing. All three have extensions and Elidir's on the left with a sloping roof matches that of Dinorwic. With a chimney these probably had the kitchens and scullery below with a room above. All three houses have narrow plots. Elidir has considerable further extensions.

Elidir's back is in two sections, a short section and a long narrow grassy garden leading down to the ditch - a former brook. There are stones under the floors of this house, and water can creep through.

The ground for this house is the pebble embankment thrown up by the sea. and called 'waste' by the Crown Manor who owned it because it was no use for farming. It was enclosed in 1820 by Evan Lloyd and his ground was very small and only measured two perches. It extended to a brook. On a map of 1829 it is shown with one cottages built on it set back from the street part of a terrace with two other cottages to the north of it. Opposite across the street was the beach (Number 43 Map National Archives LRRo 1/3060).

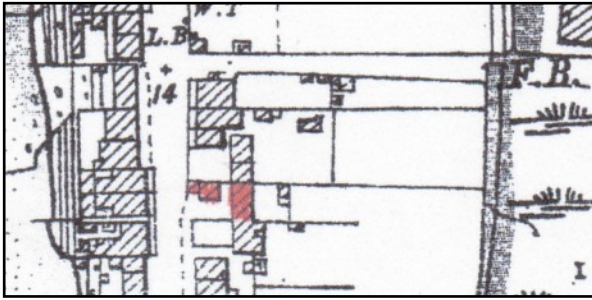


LEFT In 1848 the old cottage was still there, marked in red, but another also coloured red had been built beside the street. Morgan Hughes owned 36 and lived in one of the cottages. His ground measured only 19 perches (40 perches was a quarter of an acre) (A detail copied from the Tithe Apportionments Map for Llanfihangel Genau'r Glyn,

Cyfoeth Township on-line at CYNEFIN)

In the 1841 Census Morgan Hughes was an agricultural labourer with a wife Esther and they had children, John, Anne, David, Jane, Hugh, and Margaret By 1881, aged 71 he was working as a 'a general carrier'. Still there in 1891, aged 81 he was still working. His daughter Jane Lewis was a 49 year old widow, but her husband or family had provided for her as she had her

'own means' and did not need to work. In 1901 she was living in the cottage, and it had an address, number 2 Acorn Place.



LEFT The 25 inch Ordnance Survey Map of 1905 revised in 1904 still shows the old cottages unchanged since 1848. Munding House and Dinorwic and Elidir were not yet built. At that time the map shows that cottage and the adjoining one marked in red were owned by Captain John Rees who owned Acorn House with the front garden next door but he lived in Manchester and put tenants there. Hence the

address 'Acorn Place' for the nearby old cottages.

By 1911 important developments were happening. Munding House was built, and Dinorwic by Captain Thomas Williams for himself. Evan Morgan Lewis who lived elsewhere in Borth at Glanydon then owned the small strip of ground south of Dinorwic on which were some ruins,

probably the remains of the old cottages marked in red on the map above. Captain Thomas Williams came into possession of this, removed the cottages and built Elidir on it. (Valuation for a tax of 1910 planned but not levied. Ceredigion Archives and NLW)



LEFT In the foreground are the Glanrhyd cottages, then the three tall houses, Munding, Dinorwic and Elidir which is the furthest away. All had dormer windows with finials, and Elidir had its bow window. The front wall of Elidir was dark colour perhaps brick or rendering.

Paying the Rates for Elidir in 1925 was Captain Williams, and Thomas James Davies was living in the house and the Captain called it Elidir House. Sometime in the twenties Elidir was advertised in the Illustrated Borth Guide, price 6d. for 'furnished accommodation' for holiday makers of four bedrooms and two sitting rooms. (Aberystwyth Public Library). In 1934 Captain William's tenant had been S. M. Felgali who was succeeded by John Gwilym Morris. Captain Williams died in 1945.

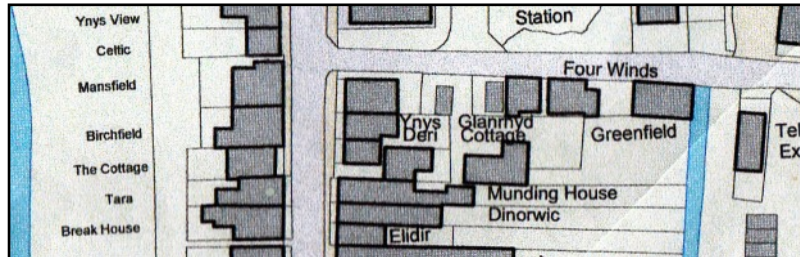
On December 4th 1943 Elidir, a freehold residence was up for auction at the Friendship Inn. It had five bedrooms, a bathroom with hot and cold running water and a lavatory. Downstairs were two reception rooms, a kitchen, a scullery, an outside lavatory, a yard and a large garden. It had a tenant, Mrs Pugh who paid £26 17s 2d per annum and she paid the rates. Possibly it did not reach its asking price because it was for sale again by private treaty on June 17th 1944 and was described as a 'well built property on the main road' (Cutting from the Cambrian News, Ceredigion Archives ABY/B/16)

With votes for the house in the General Election of 1945 were (Mrs) Jane Pugh and William E. Davies and Gwladys Davies. Terry Davies writes about catching sprats with the Davies boys from the house. (Borth A Seaborn Village, pages 68 and 69).

Elidir Page 4

Paying the Rates for Elidir in 1949 was Mrs Jane Pugh, and Mrs G. Davies paid the rates in 1957. With votes for the house in 1963 were Derrick and Edward William Pugh Davies, Erinwen Davies and William E. Davies and Mr Davies paid the rates that year (Electoral Registers and Rates Ceredigion Archives)

In 1975 the house was a simple rectangle with a very long narrow garden in two sections extending to the ditch - the former brook. The Acorn House had become a garage and was the Acorn Garage (Historical Maps on-line).



ABOVE A modern Council Map shows a long narrow house, its garden in two sections stretching down to the ditch which was once a brook.

Since then considerable additions have been added at the rear.

Archifdy Ceredigion Archives
yn cyflwyno / presents
Tai'r Borth / Houses of Borth
gan/by Beryl Lewis
[cyf/ref ADX/1629]

Mae **Tai'r Borth** yn cynnwys dros 350 hanes sy'n ymwneud ag adeiladau unigol ac mae'r hanesion wedi'u darlunio â chyfoeth o ffotograffau, mapiau a dogfennau. Mae'r ffeiliau ar gael ar ein gwefan: <https://www.archifdy-ceredigion.org.uk/tairborth.php?lang=cy>

Hoffem ddiolch i Beryl am fod mor garedig â chaniatáu i ni rannu ei gwaith â'r gynulleidfa ehangaf bosibl.

Ceidw Beryl Lewis yr hawlfraint yn ei gwaith ac mae'r hanesion yn cael eu rhannu at ddibenion preifat ac ymchwil yn unig.

Houses of Borth consists of over 350 histories of individual buildings, lavishly illustrated with photographs, maps and documents. All the files are available from our website: <https://www.archifdy-ceredigion.org.uk/tairborth.php>

We would like to thank Beryl for her kindness in letting us share her work with the widest possible audience.

Beryl Lewis retains the copyright in her work and the histories are made available for private use and research only.



Cyngor Sir
CEREDIGION
County Council



Archifdy
Ceredigion
Archives