

THE BUILDINGS OF MOREFA BORTH

- the Marsh Harbour

Ceredigion



That part of Borth Village on a pebble bank with the sea on one side and the Cors Fochno marsh some reclaimed and the railway on the other. In the distance is the River Dyfi. Photograph Michael Lewis

Photographs and History by BERYL LEWIS

This work is for research and educational purposes only.

DINORWIC

Morfa Borth - the Marsh Harbour

Built after 1904 but by 1910 by Captain Thomas Williams. Terry Davies writes about him in his 'Borth A Maritime History' page 127.



ABOVE Dinorwic in 2015.

The house is single fronted and is the central house in a terrace of three. There are two storeys, with a wide modern dormer window for another floor under the roof. Though not very wide this building has great depth. The walls are stone and rendered, and at the eaves bricks or brick shaped stones make a pattern of of dentils like little beam ends. This is repeated in Munding and Elidir on either side. The roof is tiled. The upper front window is above the bow window on the ground floor. It has a modern frame with two horizontal lights. On the ground floor the canted bay window has four sections, also with modern framing. The gable window is wide and has a modern frame with two lights. The chimney is brick, and is shared with Munding and has 4 chimney pots. The front door is on the south side of the front, and has a moulded top edge supported by pilasters with a simple capital either side of the front door. These match both Dinorwic and Munding next door. It shares the narrow front garden with Elidir with its low wall and plain railings. At the back is a two storey wing

under a sloping roof with one window. The wing ends in a single storey sun room. There is a long narrow grassy garden at the back leading down to a ditch - the former brook.

Dinorwic (Dinorwig) is a village in North Wales with a nearby former slate quarry - the second largest in Wales. A settlement in Ontario Canada was named after it.

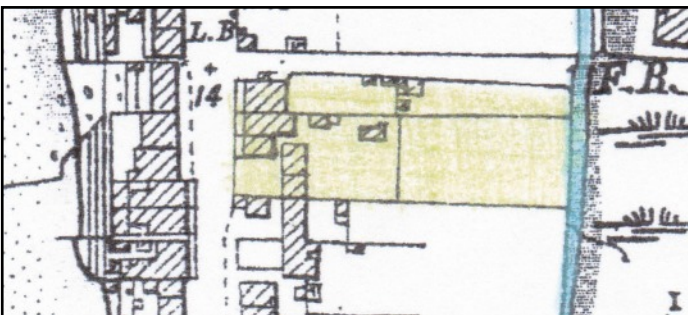


LEFT The front doors of Munding on the left and Dinorwic on the right match.

The ground for this house was enclosed in 1823 by a weaver Lewis Lewis, from the pebble embankment thrown up by the sea, and called 'waste' because it was no use for farming. The ground measured one rod - a quarter of an acre - and extended to a brook. On a map of 1829 it is shown with a terrace of cottages built on it set back from the street. A rent of £2.6s had to be paid every year to the Crown manor who owned the ground. Opposite across the street was the beach. The road was centuries old being a short cut to North Wales via a ferry to Aberdovey. It was a turnpike road in the 1770s.

In 1848 a small strip of this ground was enclosed from the original ground. It contained two cottages, one old one in the

terrace, and another built alongside the street. The ground measured just 19 perches and was number 36 on the Tithe Apportionments Map. Morgan Hughes owned it and lived there himself. In the 1841 Census he was an agricultural labourer with a wife Esther and they had children; John, Anne, David, Jane, Hugh, and Margaret. By 1881, aged 71 he was working as 'a general carrier'. Still there in 1891, aged 81 he was still working. His daughter Jane Lewis was a 49 year old widow, but her husband or family had provided for her as she had her 'own means' and did not need to work. In 1901 she was living in the cottage, and it had an address, number 2 Acorn Place. However there was no building yet on the site of Dinorwic.



LEFT In 1904 marked in yellow is the ground of Lewis Lewis the weaver. The empty square by the main street was where Dinorwic and Munding would be built. There were still old cottages behind owned by Captain John Rees who owned Acorn House, but he lived in Manchester and put tenants there.

Hence the address 'Acorn Place' (Detail

from the 25 inch Ordnance Survey Map revised in 1904 and published in 1905).

By 1911 important developments had happened on the site which was divided into two. Dinorwic was built on the northern side of the site beside the street by Captain Thomas Williams or himself, and his home reached back to the old cottage behind it - was it allowed to stay for Jane Lewis? Jane Lewis was there at the 1911 Census and her cottage had three rooms. Evan Morgan Lewis who lived elsewhere in Borth at Glanydon now owned the ground next to Dinorwic on which were some ruins, probably the remains of part of the old cottages. Captain Thomas Williams was to come into possession of this and build Elidir on it. So Dinorwic and Elidir shared the old site of Morgan Hughes's cottage and land, and both had to fit into long thin sites.

In 1910 for a valuation for a tax planned but not levied this house was valued at £291 1s. There would have been £6.16s to pay, £8 gross. The owner and occupier was Captain Thomas Williams, a retired master mariner of 61, born in Borth in 1849. In the house at the 1911 Census was the Captain and his wife Margaret born in Borth about 1850. She was a Welsh speaker. They had been married for 38 years and had two children both of whom were still living. (Ceredigion Archives and map at the National Library of Wales)

Sometime after 1922 in the Illustrated Borth Guide, price 6d, furnished apartments were advertised in this house of five bedrooms and two sitting rooms (Aberystwyth Public Library). Were the Captain and his wife there in the summer?

In 1925 the Captain paid the Rates and was listed as the owner and occupier. In 1934 the Captain had paid the rates but Jane Williams then paid them.

Thomas Williams died in 1945. With a vote at the General election that year was Jane Williams and she paid the rates in 1949.

In a Borth Guide Book of 1950 Mrs J. Williams was offering the same accommodation with 'Mod. Cons' so visitors could expect hot running water and electricity. She paid the rates in 1957.

F. H. Castle paid the rates in 1963, and with a vote for the house was Jane Williams (Electoral Registers and Rates, Ceredigion Archives)

Today the house has four bedrooms.

BELOW The rear of the three houses that Captain William's built. Dinorwic is in the centre. All three have extensions and all had narrow plots. Dinorwic ends with a single storey sun room.



Archifdy Ceredigion Archives
yn cyflwyno / presents
Tai'r Borth / Houses of Borth
gan/by Beryl Lewis
[cyf/ref ADX/1629]

Mae **Tai'r Borth** yn cynnwys dros 350 hanes sy'n ymwneud ag adeiladau unigol ac mae'r hanesion wedi'u darlunio â chyfoeth o ffotograffau, mapiau a dogfennau. Mae'r ffeiliau ar gael ar ein gwefan: <https://www.archifdy-eredigion.org.uk/tairborth.php?lang=cy>

Hoffem ddiolch i Beryl am fod mor garedig â chaniatáu i ni rannu ei gwaith â'r gynulleidfa ehangaf bosibl.

Ceidw Beryl Lewis yr hawlfraint yn ei gwaith ac mae'r hanesion yn cael eu rhannu at ddibenion preifat ac ymchwil yn unig.

Houses of Borth consists of over 350 histories of individual buildings, lavishly illustrated with photographs, maps and documents. All the files are available from our website: <https://www.archifdy-eredigion.org.uk/tairborth.php>

We would like to thank Beryl for her kindness in letting us share her work with the widest possible audience.

Beryl Lewis retains the copyright in her work and the histories are made available for private use and research only.



Cyngor Sir
CEREDIGION
County Council



Archifdy
Ceredigion
Archives