

# THE BUILDINGS OF MOREFA BORTH

- the Marsh Harbour

Ceredigion



That part of Borth Village on a pebble bank with the sea on one side and the Cors Fochno marsh some reclaimed and the railway on the other. In the distance is the River Dyfi. Photograph Michael Lewis

Photographs and History by BERYL LEWIS

*This work is for research and educational purposes only.*

# COASTGUARD and LIFEBOAT HOUSE

Morfa Borth - the Marsh Harbour

On the beach side at the roundabout of the High Street and the road to Llandre. The coastguard house was built in 2007



*ABOVE The building in 2019. The lifeboat is housed on the ground floor on the beach side of the building, with an adjacent small R.N.L.I. shop and a crew room with good views of the bay, and containing training facilities in first aid and navigation and knots for the crews. There is also a changing room, and a shower and privacy for rescued people in the northern wing at the front of the building. The crew is usually three people, but can be 2 or 4. The north side of the building on the right has a small shop for the RNLi with a passage and steps leading up to it.*

*The coastguard has the far end of the building, the south wing has an internal garage and on the top floor is an office with windows all round with a 140 degree outlook. His part of the building has other facilities as he may be on duty long hours there. He is at hand to alert the lifeboat crew to people or boats in distress.*

*There is parking at the front of the building.*

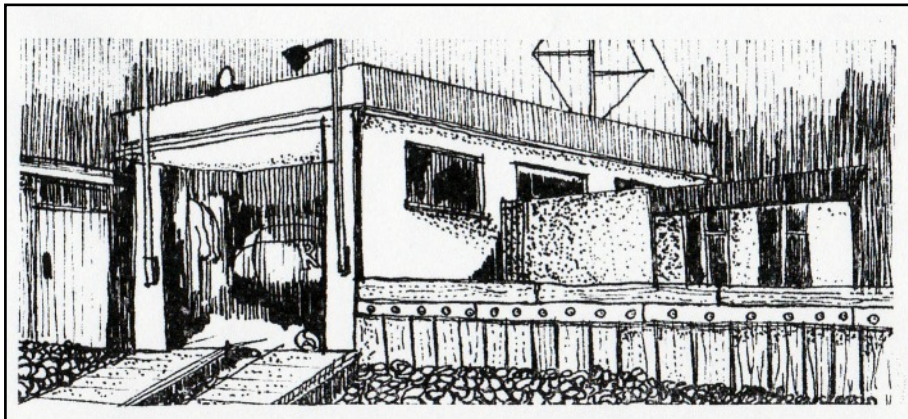


*ABOVE The building from the road in 2019. The coastguard has the part on the left.*



*ABOVE The south face of the building with the public conveniences in the foreground. The architect has brought life into an otherwise plain wall with an inlaid stone line and matching grey stones round the windows.*

There had been two previous buildings for the lifeboat , a timber one built in 1966 when there was no slipway and the D-class inshore lifeboats had to be carried down to the sea.



*LEFT A drawing of the lifeboat house in the late 1960s made for a 'Unique Village Guide to Borth'.*



*ABOVE A purpose built brick lifeboat house was built in 1987. By the road was a stone built bus shelter, later pulled down. It was big inside and whitewashed. There was a low stone or brick wall running along all three sides topped with unvarnished wooden planks. There were seats. Eventually someone painted a mural on the back wall. This shape of building with a hipped roof has been used again for the present conveniences. The small white building by the bus shelter was the public conveniences. Alan Cash whose father took this photograph had holidays in Borth as a child and thinks the white building with a flag by the lifeboat house was for the coastguard. (Photograph courtesy of Alan Cash).*



*ABOVE The west face of the building in 2019. Large double doors protect the lifeboat. On the far left is the slipway down which to launch boats.*

Details of Borth's lifeboats, the people involved and some notable rescues are on-line with the RNLI.

Archifdy Ceredigion Archives  
yn cyflwyno / presents  
**Tai'r Borth / Houses of Borth**  
gan/by Beryl Lewis  
[cyf/ref ADX/1629]

Mae **Tai'r Borth** yn cynnwys dros 350 hanes sy'n ymwneud ag adeiladau unigol ac mae'r hanesion wedi'u darlunio â chyfoeth o ffotograffau, mapiau a dogfennau. Mae'r ffeiliau ar gael ar ein gwefan: <https://www.archifdy-eredigion.org.uk/tairborth.php?lang=cy>

Hoffem ddiolch i Beryl am fod mor garedig â chaniatáu i ni rannu ei gwaith â'r gynulleidfa ehangaf bosibl.

Ceidw Beryl Lewis yr hawlfraint yn ei gwaith ac mae'r hanesion yn cael eu rhannu at ddibenion preifat ac ymchwil yn unig.

**Houses of Borth** consists of over 350 histories of individual buildings, lavishly illustrated with photographs, maps and documents. All the files are available from our website: <https://www.archifdy-eredigion.org.uk/tairborth.php>

We would like to thank Beryl for her kindness in letting us share her work with the widest possible audience.

Beryl Lewis retains the copyright in her work and the histories are made available for private use and research only.



Cyngor Sir  
**CEREDIGION**  
County Council



Archifdy  
Ceredigion  
Archives