

# THE BUILDINGS OF MOREFA BORTH

- the Marsh Harbour

Ceredigion



That part of Borth Village on a pebble bank with the sea on one side and the Cors Fochno marsh some reclaimed and the railway on the other. In the distance is the River Dyfi. Photograph Michael Lewis

Photographs and History by BERYL LEWIS

*This work is for research and educational purposes only.*

# CARREG WEN

## Morfa Borth – the Marsh Harbour

Formerly one of the Welseyan Place Cottages, briefly called Arfon House. The front of this building is one of Morfa Borth's oldest cottages, built after 1829 and by 1841. It was the home of John Jones's family who first enclosed the ground in 1809. The cottage is on the east side of the High Street, close to the former Wesleyan Chapel at the southern end of the village.



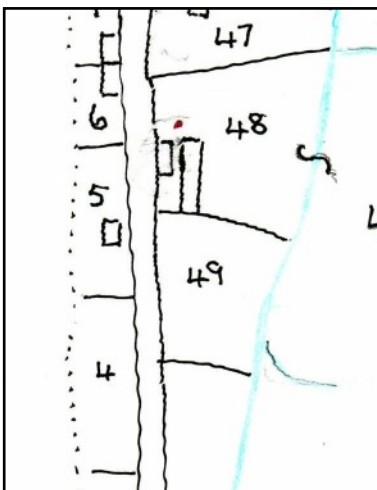
*LEFT The cottage in the 1960s (Photograph courtesy of Sue Plater)*

This is a single storey cottage with a gable roof parallel to the street. It shares a chimney with Y Gragen on the south and this has a rubble stone base with bricks above and a cowl on top. The front wall is rendered. The front windows are sash windows with four lights. There is a narrow front garden enclosed by a low rubble stone wall which is whitewashed. There is a roof

light for an attic floor on the northern side of the front of the roof. Today the building has a generous extension on the back. It shares a garden with Derwen. This extends as far as the east end of the Warehouse/Chapel. It is not clear how access can be gained to the rear.

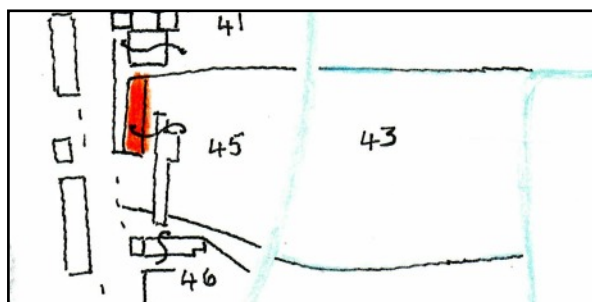


*LEFT Carreg Wen in 2009 is on the left. It was once part of a row of four cottages.*



The ground for this house was enclosed in 1809 by John Jones from the pebble embankment thrown up by the sea, and called 'waste' because it was no use for farming. It was the last enclosure of Morfa Borth on the Cors side with cottages before a gap and then three lime kilns. The ground measured 2 rods and 4 perches, that is about half an acre, and extended to a brook. A rent of £3 had to be paid every year to the Crown manor who owned the ground. The road was centuries old being a quick way to North Wales via a ferry to Aberdovey.

*LEFT In 1829 Jones's ground is number 48 and included land across a brook. There are some cottages there, but none on the site of Carreg Wen. (Tracing from a map, National Archives LRRO 1/3060)*



*LEFT* By 1848 a terrace of cottages had been built beside the street, marked in red. Some of the old cottages were still there. There were two owners of the ground and cottages, John Jones who also had Number 43, and John Benjamin a carpenter from Glanwern, of Ty Gwyn then Cwm Cethin. Living in some of the cottages were John Evans and Margaret Davies (Detail from the

*Tithe Apportionments Map for Llanfihangel Genau'r Glyn, Cyfoeth township, on line at CYNEFIN)*

In the 1841 Census John Jones was an agricultural labourer already middle aged, aged 65. Born about 1776 he would have been an enterprising young man of 23 when he enclosed his pieces of ground. His wife was Catherine, and he had children Margaret 21 born about 1820, Jane aged 18, born about 1823 and William aged 16, born about 1825. His son William became a sailor and his was the next family to live in the cottage. His wife Jane was born about 1824, and they had children Jane (1850) Catherine (1853) Anne (1855) and John (1857). In 1881 at the Census the cottage had an address, "7 Wesleyan Place".

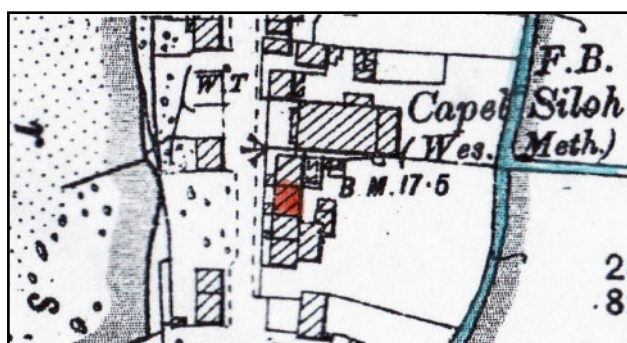
The next family to live in the cottage were William and Jane's daughter Jane ;who wed a mariner, John Hughes, born in 1849 in Borth.



*LEFT* Marked in red is the Hughes's cottage in 1886. It had a front garden but all the cottages and the ground at the back belonged with what was to become Auckland House (Detail from the Ordnance Survey 25 inch Map surveyed in 1886 and published in 1888. Cardiganshire NW III.10)

Jane Hughes was a widow by 1891, earning her living as a laundress, and looking after her father William Jones,

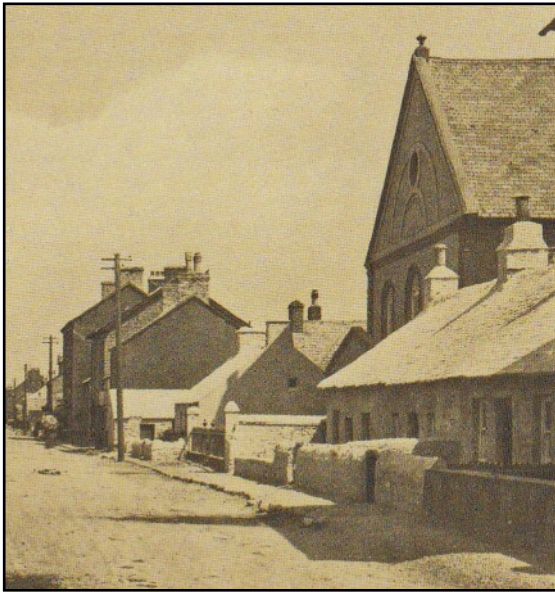
by then a retired mariner. Briefly the cottage was called Arfon House. (1891 Census).



*LEFT* In 1904 the cottage had not changed though Auckland's buildings were partly behind it. The small buildings were often a Ty Bach - outside lavatory and pig stys. There was access to the back of all the cottages on the south. Part of John Jones's ground on the south had been enclosed for a bigger building, (now gone) and this belonged with 'Garden Street' and the Myfanwy

Cottage etc. The curlicue across the brook suggests the owner of all the cottages still owned the enclosure across the brook. (Detail from the Ordnance Survey 25 inch Map revised in 1904 and published in 1905. Cardiganshire NW III.10)

In 1910 for a valuation for a tax planned but not levied the cottage and garden was valued at £31. There would have been £1.16s to pay, £2.5s gross. Jane Hughes owned the cottage and was living there (Ceredigion Archives T/DV/18 and map at the National Library of Wales).



This is about the same valuation as Borth's old clom (cob) cottages - would we find that under the modern plaster?

In 1925 Anne Williams of Auckland House owned the cottage, and there was a tenant there, James Jenkins. Paying the Rates in 1949 was Ernest Haigh. The address was still "Wesleyan Place". The amount to pay suggested this was still a small cottage.

*LEFT We have a glimpse of the cottage in 1921 on the far right of this detail from a postcard. Derwen next door on the north side was still a small 'Wesleyan Place' cottage. The slope of the roofs, then thin slates, was steep enough for reed thatch, and the ledge on*

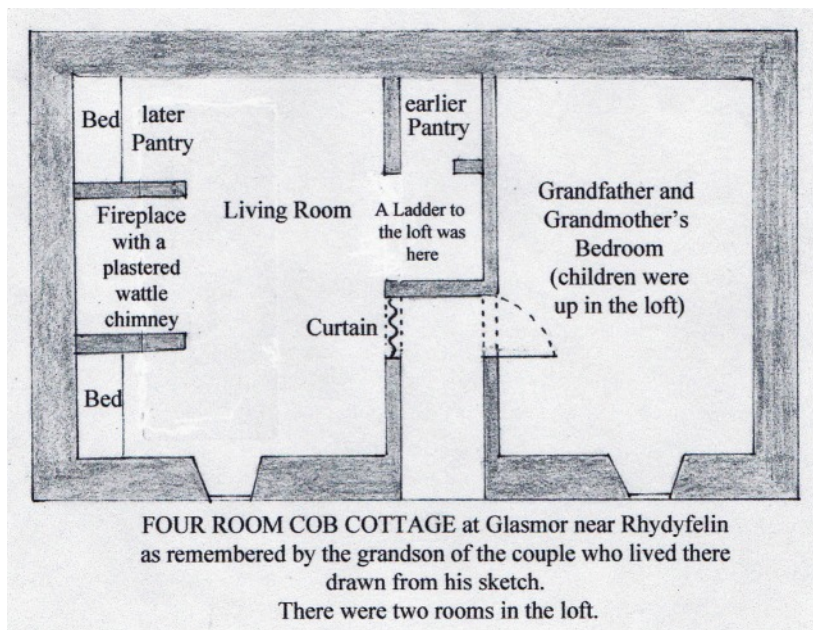
*the nearest chimney is often seen when a roof was once thatched.*

Mrs Williams of Auckland owned Carreg Wen in 1934, with a tenant T. J. Davies. Mary Morgan paid the rates in 1938, Earnest Haigh in 1949. The address was still 'Wesley Place'.

In 1957 the cottage had a name Bwyth Carreg (Carreg Cottage) and K. Heath paid the rates.

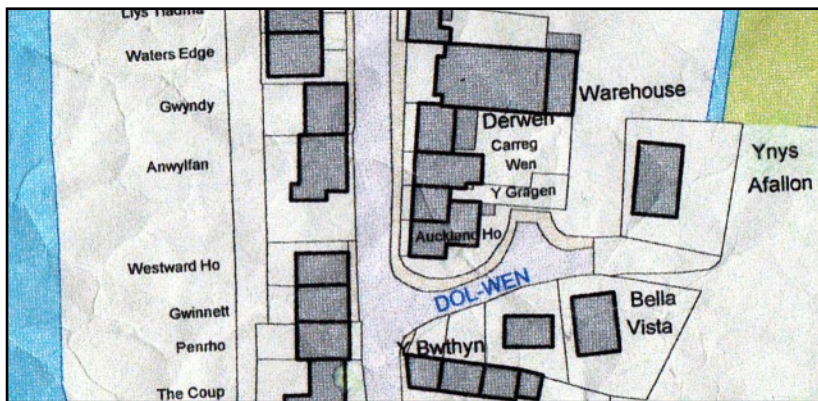
In 1963 the cottage had its name Carreg Wen and paying the rates was 'Dennison'. No one had a vote for the cottage that year (Electoral Registers and Rates, Ceredigion Archives).

In 'A Guide to Borth' published in 1965 the cottage offered accommodation of a furnished house or bungalow or chalet which was advertised by Mrs Beacham probably Eleanor Beacham. The large extension on the rear of the cottage had been built. (Aberystwyth Public Library and Rates at Ceredigion Archives)



*LEFT This gives an idea how a cottage such as Carreg Wen was organised inside. The hearth in Carreg Wen was on the other side of the cottage - and that wall and the fireplace would probably have been rubble stone if the cottage was clom (cob). The lower area of the walls would also have been rubble stones - usually in Borth rounded pebbles from the beach.*

In 1975 there were still buildings at the rear of the cottage, and the surveyor has drawn the same owner with Carreg Wen and y Gragen (Historical Maps On-line)



*LEFT Today there are no small buildings at the rear, and Carreg Wen now has a substantial extension on the back. It shares a garden with Derwen which extends as far as the rear boundary of the Warehouse/Chapel, but there is the new house Ynys Afallon on ground at the back (Detail from a Council*

*Map courtesy of Councillor Ray Quant who provided it for research for a village event).*

The name of the cottage is Welsh and means 'white stone'.

Archifdy Ceredigion Archives  
yn cyflwyno / presents  
**Tai'r Borth / Houses of Borth**  
gan/by Beryl Lewis  
[cyf/ref ADX/1629]

Mae **Tai'r Borth** yn cynnwys dros 350 hanes sy'n ymwneud ag adeiladau unigol ac mae'r hanesion wedi'u darlunio â chyfoeth o ffotograffau, mapiau a dogfennau. Mae'r ffeiliau ar gael ar ein gwefan: <https://www.archifdy-ceredigion.org.uk/tairborth.php?lang=cy>

Hoffem ddiolch i Beryl am fod mor garedig â chaniatáu i ni rannu ei gwaith â'r gynulleidfa ehangaf bosibl.

Ceidw Beryl Lewis yr hawlfraint yn ei gwaith ac mae'r hanesion yn cael eu rhannu at ddibenion preifat ac ymchwil yn unig.

**Houses of Borth** consists of over 350 histories of individual buildings, lavishly illustrated with photographs, maps and documents. All the files are available from our website: <https://www.archifdy-ceredigion.org.uk/tairborth.php>

We would like to thank Beryl for her kindness in letting us share her work with the widest possible audience.

Beryl Lewis retains the copyright in her work and the histories are made available for private use and research only.



Cyngor Sir  
**CEREDIGION**  
County Council



Archifdy  
Ceredigion  
Archives