

THE BUILDINGS OF MOREFA BORTH

- the Marsh Harbour

Ceredigion



That part of Borth Village on a pebble bank with the sea on one side and the Cors Fochno marsh some reclaimed and the railway on the other. In the distance is the River Dyfi. Photograph Michael Lewis

Photographs and History by BERYL LEWIS

This work is for research and educational purposes only.

BWTHYN-Y-WERN

Morfa Borth - the Marsh Harbour

Formerly Number 3 London Place and then Lozells. A development from an earlier cottage built by 1829 by a Hughes master mariner on ground he had owned since 1822. It continued with a Hughes family butcher, and with a succession of tenants in the later nineteenth and early twentieth century.



Bwthyn - wern in 2019

Bwthyn-y-wern is the southernmost of a terrace of three cottages, of one and a half storeys high, double fronted, and with gable windows in the roof, the barge boards are plain. The windows are modern and front door is also modern and opens directly on to the street. The roof is tiled. and there is a stone chimney on the northern end with one chimney pot. Shared with Number 2. There is a garden stretching three quarters of the way to the ditch - a former brook.



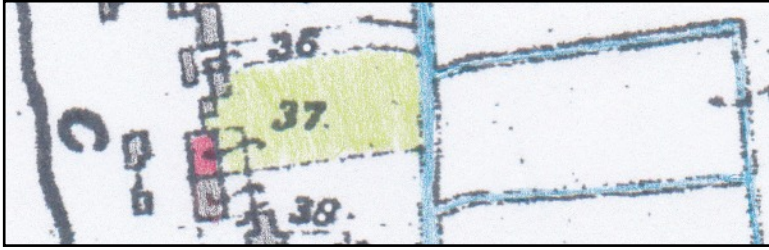
LEFT London Place was named after London house which is on the right at the end of the row as in earlier times cottages did not have names and for the convenience of the postman were made into a 'place' named after the most important building nearby. The old cottages are set back a little from the large London House. They are very similar though Mirella on the far left was built later than the other two.

BELOW The back of the cottage in 2018.



The ground this cottage stands on was enclosed in 1820 by Evan Lloyd from the pebble embankment thrown up by the sea, and called 'waste' by the Crown Manor who owned it because it was no use for farming. The ground measured one rod and 19 perches, that is over half an acre and extended to a brook with fresh water. The London Place cottages had not been built on this ground yet, only a cottage that would become Acorn (Number 44, Map 1829, National Archives LRRO 1/3060)

By 1848 Ann Hughes, probably the widow of master mariner John Hughes owned the ground, measured then at 1 rod and 25 perches. She was born at Ty Du, and had a daughter Ann. He was a master mariner, a captain of wooden sailing vessels and with shares in many of them which would have provided a good income for his family (Register of Shipping Aberystwyth, Ceredigion Archives) The cottages that would become Holmleigh and Bythyn-y-wern had been built but no Mirella yet - just one very tiny building on that ground

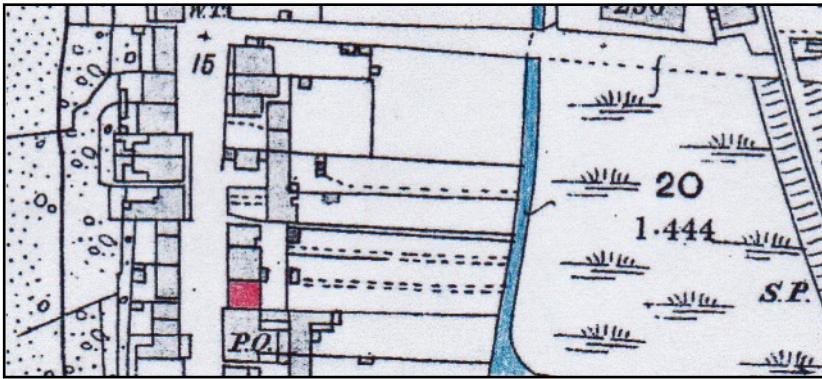


LEFT In 1848 Number 37 was Ann Hughes's ground and a block of two cottages on the site is marked in red, now Number 2 London Place and Bwythyn-y-wern. (Detail from the Tithe Apportionments Map for Llanfihangel

Genau'r Glyn, Cyfoeth Township on-line at CYNEFIN) NLW)

In the 1851, 1861 and 1871 Census it is likely from the list that a younger Hughes family was living there, Evan Hughes, a butcher, with a wife Elisa, sons David, Evan and Lewis, daughters Sarah and Anne and in 1871 a young lodger, John Rees who was 13 but already a seaman. The Census of 1851 suggests that Ann Hughes's original house had expanded to the three cottages we know today.

It is not possible to trace it in the 1881 Census, as London Place had cottages on both sides of the street, and the Census takers crossed from side to side.

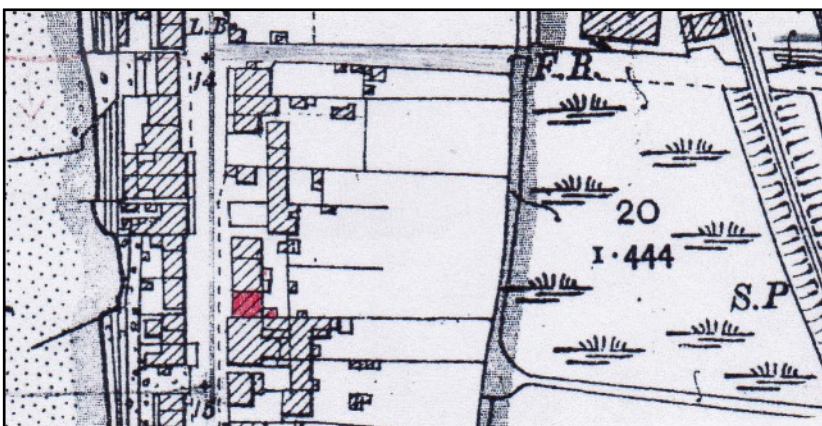


LEFT The cottage in 1886 is marked in red. It shared its yard and garden with the other cottages in the terrace which suggests they had the same owner. A footpath to the brook divides the gardens. The cottage is a square shape (Detail from the 25 inch Ordnance Survey Map surveyed in 1886 and published in

1888, Cardiganshire NW III.10).

In the cottage in 1891 at the Census was Anne Jones, a master mariner's wife, aged 47, and born in Borth about 1844. She only spoke Welsh.

In the cottage in 1901 at the Census was a 68 year old widower, Thomas Roberts who was a golf green keeper. He was not local, having been born at St Asaph. Also in the cottage was his daughter Mary E. Roberts, aged 24, a local girl born in Borth. They spoke both Welsh and English.



LEFT On the map of 1905 there was a small extension on the back of the cottage. It does not have its own garden yet and the surveyor has drawn all the cottages as belonging to Acorn House. The small building may have been its Ty Bach.



LEFT This detail from an old postcard shows the terrace alongside London House in the foreground. There were no dormer windows in the roof then, and the upper windows of the cottages were very small. As Bwthyn-y-wern is set back it is behind London House and we cannot see it, however it is likely its front matched the other two cottages (Postcard courtesy of the Amgeuddfa Ceredigion Museum).

In 1910 for a valuation for a tax planned but not levied this cottage was valued at £108. There would have been £3.4s to pay, £4 gross. The owner was called Luck and living there was John E. Brodingan. In the Census of 1911 there is no clear entry for this cottage.

In 1925 Elizabeth Lyons owned the cottage, paid the Rates for it, and lived there, and it was still called a cottage and garden at London Place.

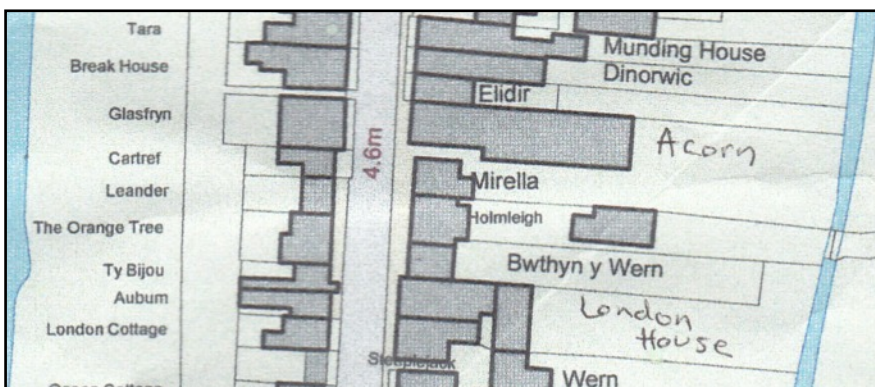
In 1934 Elizabeth Lyons still owned the cottage. Annie M. Parry had been her tenant, but she was succeeded by D. Hughes Richards. It was called Lozells.

In 1949 and still in 1957 J. Elizabeth Richards paid the rates for Lozells.

J. W. Smith paid the rates in 1963 and Adelaide Willder Smith had a vote for the cottage that year. It was still called Lozells (Electoral Registers and Rates, Ceredigion Archives).

In 1975 the cottage was drawn belonging with London House (not named as it was a commercial premises) and shared its garden all the way to the ditch. It had a small extension on the south side at the back (*See at Google, ask for Historical Maps On-line*).

Bwthyn-y-wern the present name of the cottage is Welsh and means Marsh Cottage.



LEFT A more modern 25 inch Ordnance Survey Map shows that the cottage has its own garden but this no longer extends all the way to the old ditch. The 1975 extension had gone (Map courtesy of Councillor Ray Quant when assisting research for a local event)

Archifdy Ceredigion Archives
yn cyflwyno / presents
Tai'r Borth / Houses of Borth
gan/by Beryl Lewis
[cyf/ref ADX/1629]

Mae **Tai'r Borth** yn cynnwys dros 350 hanes sy'n ymwneud ag adeiladau unigol ac mae'r hanesion wedi'u darlunio â chyfoeth o ffotograffau, mapiau a dogfennau. Mae'r ffeiliau ar gael ar ein gwefan: <https://www.archifdy-ceredigion.org.uk/tairborth.php?lang=cy>

Hoffem ddiolch i Beryl am fod mor garedig â chaniatáu i ni rannu ei gwaith â'r gynulleidfa ehangaf bosibl.

Ceidw Beryl Lewis yr hawlfraint yn ei gwaith ac mae'r hanesion yn cael eu rhannu at ddibenion preifat ac ymchwil yn unig.

Houses of Borth consists of over 350 histories of individual buildings, lavishly illustrated with photographs, maps and documents. All the files are available from our website: <https://www.archifdy-ceredigion.org.uk/tairborth.php>

We would like to thank Beryl for her kindness in letting us share her work with the widest possible audience.

Beryl Lewis retains the copyright in her work and the histories are made available for private use and research only.



Cyngor Sir
CEREDIGION
County Council



Archifdy
Ceredigion
Archives