

THE BUILDINGS OF MOREFA BORTH

- the Marsh Harbour

Ceredigion



That part of Borth Village on a pebble bank with the sea on one side and the Cors Fochno marsh some reclaimed and the railway on the other. In the distance is the River Dyfi. Photograph Michael Lewis

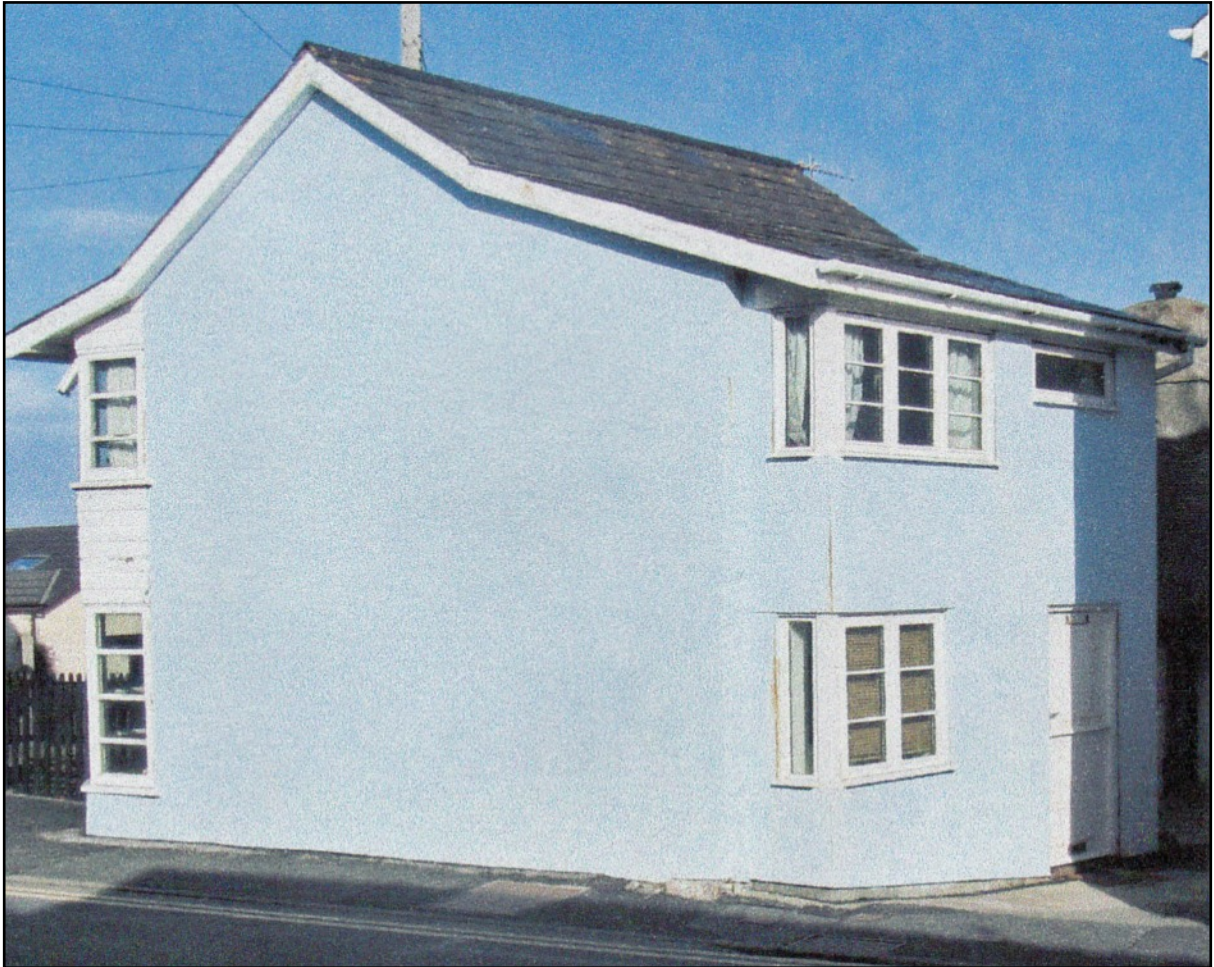
Photographs and History by BERYL LEWIS

This work is for research and educational purposes only.

Y BWTHYN

Morfa Borth - the Marsh Harbour

Formerly in Garden Street, one of a terrace of three cottages built by 1848. Later a stable for the baker Captain Thomas Davies at Nathaniel now converted into a dwelling. Also called Caban.



ABOVE The cottage in 2015 its roof showing extensions both sides for the windows.

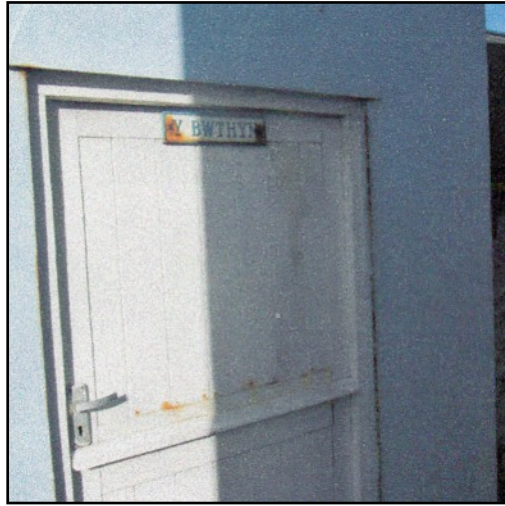
LEFT The north side of the cottage facing Dôl Wen. There is a chimney left from the old stable.

Y Bwythyn is the westernmost of a terrace of three cottages at right angles to Borth High Street, and at the southern end of the village. It was the smallest of the cottages and is single fronted. Garden Street consisted of these three cottages and on the other side of the street, now gone was another cottage later called Osprey Cottage.

The entrance to Y Bwthyn is on the south side is single fronted. There are two storeys under a gable roof. The walls are rendered. The High Street gable end is plain, filled in and rebuilt from the stable door which villagers remember opened on to the street. The east end of the cottage butts up against Myfanwy Cottage. On the north wall is a small high gable window to light a loft. Today the ground floor is one room with a staircase against the east wall.



LEFT The north stone wall has a large proportion of rounded stones from the beach of all sizes.

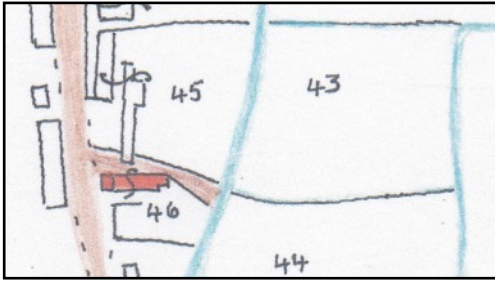


LEFT The door, the only entrance, is a stable door in two halves.



LEFT The cottage has a small garden. Next door the terrace continues with the old cottages Myfanwy and Bwthyn Gwyn.

The ground for this cottage in 1829 was called 'beach' and unoccupied (Number 49, map National Archives LRRO 1/3060). This was on the pebble embankment thrown up by the sea, and called 'waste' because it was no use for farming. The enclosures with cottages had ended, and beyond were lime kilns. The road had been there for centuries and was a turnpike road by the 1770s. It led to a ferry from Ynyslas to Aberdovey and was a quick way to North Wales.



By 1848 the cottages in the terrace marked in red had been built and were owned by John Benjamin, from the family of carpenters at Glanwern's Ty Gwyn (formerly Cwm Cethin). They then faced 'Garden Street' coloured brown which ran down to a brook. This was fresh water for the cottages, the tailrace from the corn mill at Glanlerry with water from the River Lerry, and streams from Glanwern's Ty Gwyn (formerly Cwm Cethin) and

Bryn Owen. There was a footbridge across the brook into pastures enclosed by ditches. The rear of the cottages shared a yard - cobbled today - and this was access from the High Street. Across the yard was a garden measuring 29 perches, and shared by all the cottages and it extended to the brook. It is now gone, built upon, for Ty Carreg and for a former bakery of Captain Thomas Davies of Nathaniel now flats.

In one cottage in 1848 were John Evans, a 44 year old mariner, his wife Mary, and children John and Eliza. They had a servant, Anne Richard. In another cottage was Margaret Davies, wife of William a mariner, (born about 1818), and with children Jane (1831), John and Enoch (1836) William (1839) and Thomas (1841). They were still there in 1871. In the third cottage was probably John Benjamin, a joiner, the owner, (1809) and his wife Susana (1802). In the earlier Census's addresses were not given, so which family lived in which cottage cannot be said for certain. However, it is likely that in Y Bwthyn Garden Street was the family of John Davies, by 1851 and to 1871. He was a mariner born about 1803 and his wife Sarah was born about 1806. They had five children including Sarah (1841), and James (1859). Sarah married a Lloyd. Another daughter wed a Jones. In 1871, at the Census and in the cottage with them was their son James, by then an agent and a coal merchant, a grand-daughter 18 year old Catherine Jones, a domestic servant and a grandson John Gwilym Davies. The old people would have died by the Census of 1891.

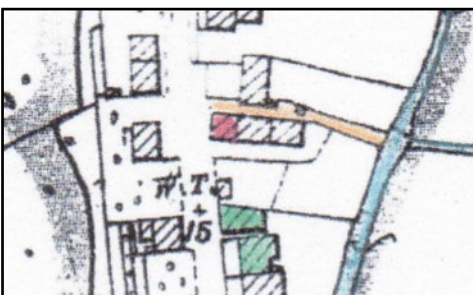


LEFT The cottage in 1886 is marked in red. It shared a narrow rear yard with the other two cottages and the surveyor has marked them all in the same ownership. Usually such cottages had a central front door and a passage, opening into a kitchen/living room, with the hearth on one side, and opening into the best bedroom on the other. A ladder or stairs would lead up to the loft where

children slept. Y Bwthyn would be like Hendre in Railway Terrace (Detail from the 25 inch Ordnance Survey Map surveyed in 1886 and published in 1888. Cardiganshire, NW III.10)

At the Census of 1891 in the cottage was John Edwards aged 72, a widower, a 'retired sailor' born in Borth. Also there was his daughter Margaret Edwards, a mariner's wife with children Annie, 11, John, 9, Minnie, 7, and Nellie, 5. This was a Welsh speaking family.

In 1901 at the Census the cottage was empty.



LEFT The cottage in 1904. Marked in green is the bakery of Captain Thomas Davies and his house, Nathaniel, next door (Detail from the 25 inch Ordnance Survey Map revised in 1886 and published in 1905. Cardiganshire, NW III.10)

In 1910 for a tax planned but not levied the owner was William Evans, and it was listed as both a cottage and garden and as a stable of Captain Thomas Davies, a baker,

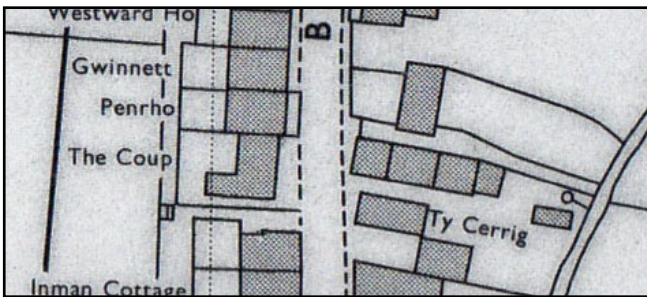
who lived at Nathaniel. Captain Davies whose Nathaniel was named after his schooner, also had a bakehouse by his house, a coach house across the street and a breadshop at the other end of the village. He was still in business in 1925. (Ceredigion Archives T/DV/18 and map at the NLW). Villagers remembered the stable and the baker's horse. There was an upstairs, and a chimney so a stable lad or groom could have lived upstairs.

At the Census of 1911 none of the three cottages was listed.

The owner in 1925 and 1934 paying the Rates for a 'Cabin' also spelt 'Caban' was J. M. Cadwallader and he, or she was the occupier. The amount to pay was less than for Myfanwy and Bwthyn Gwyn.

With a vote for the cottage in the General Election of 1945 was Phyllis I. Sumsion (Electoral Registers and Rates Ceredigion Archives).

Paying the Rates for the cottage in 1949 and still in 1963 was D. J. Cadwallader, and its name was still Caban. The Rates to pay had increased, so I wonder if the cottage had been altered by then?



LEFT The three cottages in 1975. Garden Street was still there and over the road was a very old cottage called Osprey House (Detail from Historical Maps On-line).

Today the garden fence behind the cottage is alongside the new lane for the Dôl Wen Estate and Garden Street has gone. The present name for the building is Welsh and means 'The Cottage'.

Archifdy Ceredigion Archives
yn cyflwyno / presents
Tai'r Borth / Houses of Borth
gan/by Beryl Lewis
[cyf/ref ADX/1629]

Mae **Tai'r Borth** yn cynnwys dros 350 hanes sy'n ymwneud ag adeiladau unigol ac mae'r hanesion wedi'u darlunio â chyfoeth o ffotograffau, mapiau a dogfennau. Mae'r ffeiliau ar gael ar ein gwefan: <https://www.archifdy-ceredigion.org.uk/tairborth.php?lang=cy>

Hoffem ddiolch i Beryl am fod mor garedig â chaniatáu i ni rannu ei gwaith â'r gynulleidfa ehangaf bosibl.

Ceidw Beryl Lewis yr hawlfraint yn ei gwaith ac mae'r hanesion yn cael eu rhannu at ddibenion preifat ac ymchwil yn unig.

Houses of Borth consists of over 350 histories of individual buildings, lavishly illustrated with photographs, maps and documents. All the files are available from our website: <https://www.archifdy-ceredigion.org.uk/tairborth.php>

We would like to thank Beryl for her kindness in letting us share her work with the widest possible audience.

Beryl Lewis retains the copyright in her work and the histories are made available for private use and research only.



Cyngor Sir
CEREDIGION
County Council



Archifdy
Ceredigion
Archives