

THE BUILDINGS OF MOREFA BORTH

- the Marsh Harbour

Ceredigion



That part of Borth Village on a pebble bank with the sea on one side and the Cors Fochno marsh some reclaimed and the railway on the other. In the distance is the River Dyfi. Photograph Michael Lewis

Photographs and History by BERYL LEWIS

This work is for research and educational purposes only.

BWTHYN BACH

Part of a terrace on the beach side in the middle of Borth High Street. Formerly Winkle Cottage and Number 4 Maglona Terrace with a connection to the schooner Maglona.



Bwthyn Bach in 2015

Bwthyn Bach is a double fronted two storey house under a gable roof nearly parallel to the street. There are roof lights for an attic floor. The roof is quite deeply sloping. There are rendered brick chimneys both ends the southern one shared with Ty Haf. The walls are rendered random rubble stone including round stones from the beach. Today a frame has been made in the rendering round the sash windows. A feature of the ground floor is the porch. A very low rendered wall encloses a narrow front garden which has plants. On the north side of the house is a passage to the beach. The Welsh name of the house means 'little cottage'.



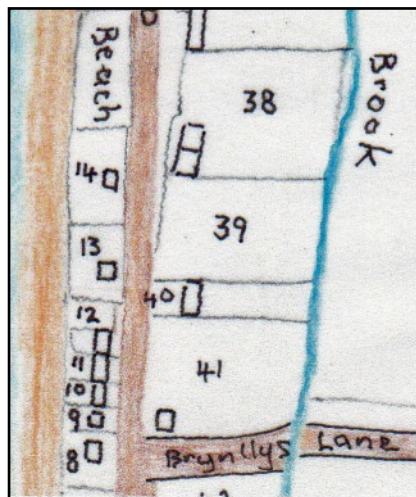


The rear of the house has a wide two storey extension under a gable roof on the north side of the yard, its upper floor which overlooks the beach opens on to a balcony. The low wall of planks at the end of the yard allows views over the beach, and a high fence gives privacy from the passageway beside the house.

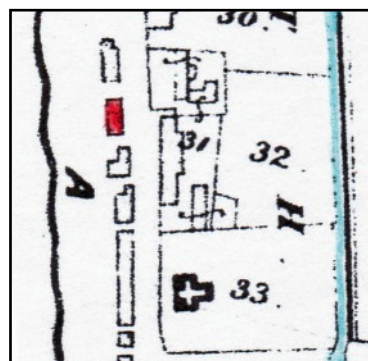
Bwthyn Bach from the beach in 2015.

The ground for this house was enclosed in 1825 by Moses Jones from the stone bank thrown up by the sea and called 'waste' by the Crown Manor Court who owned it as it was no use for farming. His ground measured 20 perches and a map of 1829 shows a cottage built on it, described as 'cottage and beach'. Moses Jones was a master mariner with a daughter born in 1818 (Parish Register Llanfihangel Genau'r Glyn, Ceredigion Archives) The road had been there for centuries and was a turnpike road by the 1770s. It led to a ferry from Ynyslas to Aberdovey and was a quick way to North Wales.

LEFT A detail copied from the map of 1829. Moses Jones's plot was Number 14 and he had plenty of ground around his cottage. (National Archives LRRO 1/3060) Six cottages would eventually be fitted into his road frontage, Glasfôr to Golf Cottage.

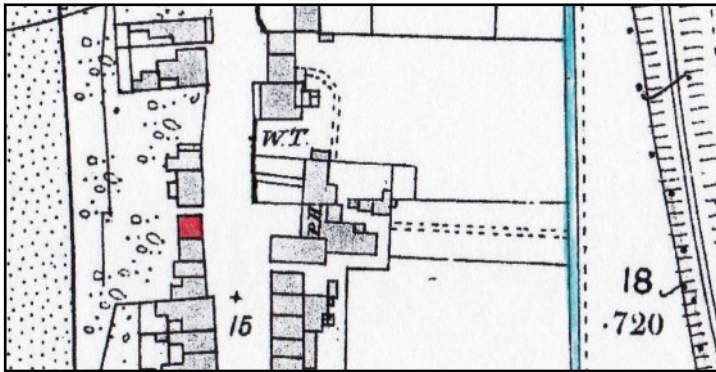


RIGHT By 1848 more buildings had been built on Moses Jones's ground, they are marked in red. We have no details of these as they had no gardens and paid no tithe. The first three present day houses in the terrace fit into that area. However there was no building where Bwthyn Bach stands today. (Tithe Apportionments Map, Llanfihangel Genau'r Glyn, Cyfoeth Township, on-line at CYNEFIN.)



Sometime after 1848 but before 1886 Bwthyn Bach was built. It is not possible to find the families living in it in the earlier Census's as houses did not have names. Even by the 1881 Census none of the homes had a name, they were simply one of the 10 St David's Place cottages and these were on both sides of the High Street. St David's Diocese (the Vicar) had owned the plot marked on the 1829 map above as Number 41, and the National School would be built on it (replaced by our Meddygfa), and a row of cottages would be built adjoining it, number 31 on the Tithe Map. It is not known at present if the Church originally owned the plot they were built on. They later belonged with the Railway Inn.

LEFT This was the house in 1886, marked in red. It was wider than its neighbours. They all opened on to the street, had no gardens, and at the back they opened on to the beach. They

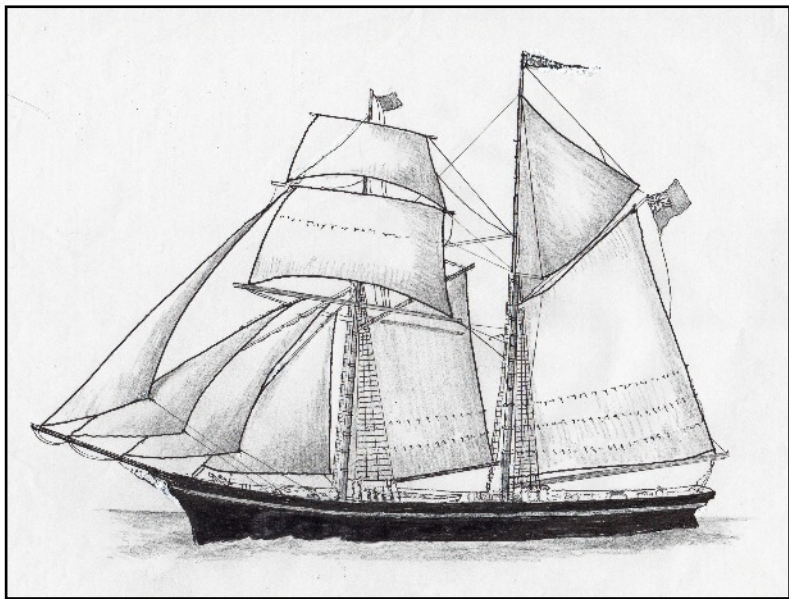


were drawn by the surveyor as all owned by the same person. There were two fences to protect this area from the sea, probably rows of stakes driven into the stone bank - the small dots represent the sand. The 'PH' over the road was the Railway Inn - then in Brookfield. (Detail from the 25 inch Ordnance Survey Map surveyed in 1886 and published in 1888. Cardiganshire III.10)

At the 1891 Census the house had an address, 4 Maglona Place. In the house was a 50 year old mariner's wife, Jane Williams, and local, born in Borth. With her was her six year old grand daughter Mary J. Owen who was born in Machynlleth.

Maglona was a splendid schooner, brand new in April 1876, registered with 144 tonnes, and built at Aberdovey by Thomas Richards. She was commanded by Owen Williams and had two masts, and a figure head

of a woman. Her owners were Morgan Owens, an Aberystwyth ship owner with 52 shares and Richard Owens a timber merchant from Machynlleth with 12. She was totally wrecked off Newfoundland in 1887 (Shipping Register, Aberystwyth Ceredigion Archives). There are houses called Maglona in Aberystwyth, Aberaeron and New Quay where people eventually had shares in the schooner. The connection of Maglona Terrace in Morfa Borth to the ship was probably from her first master, Captain Owen Williams who wed a Borth



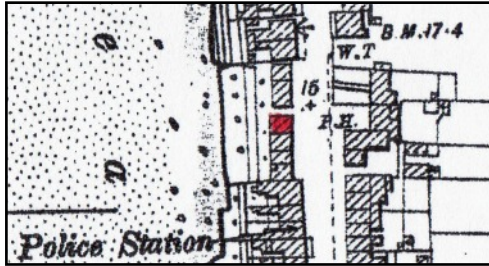
girl Elizabeth Davies on 17th August 1859. She was the daughter of a Morfa Borth mariner David Davies and his wife Ann who are in the 1841 Census for Morfa Borth. The Captain and his wife lived in Aberdovey (Captain Owen Williams family tree, on-line). It is likely that one of the six houses in the terrace was called Maglona - probably Maglona House, and it gave its name to the terrace. The schooner was sailing between 1876 and 1887 and the name first appeared in the 1891 Census as Maglona Place. It is likely all the crew were drowned when she was lost. Who remembered the schooner with pride? Mariner's wife Jane Williams aged 50 in Number 4, (Bwythyn Bach), or mariner's widow Jane Davies aged 27 in Number 1, (Glasfôr)? Certainly in 1910 a Joseph Davies was to own all the houses. Was he a descendant of Elizabeth Davies who married the Captain? Or her Davies family we know who lived in Morfa Borth?

Williams who wed a Borth

girl Elizabeth Davies on 17th August 1859. She was the daughter of a Morfa Borth mariner David Davies and his wife Ann who are in the 1841 Census for Morfa Borth. The Captain and his wife lived in Aberdovey (Captain Owen Williams family tree, on-line). It is likely that one of the six houses in the terrace was called Maglona - probably Maglona House, and it gave its name to the terrace. The schooner was sailing between 1876 and 1887 and the name first appeared in the 1891 Census as Maglona Place. It is likely all the crew were drowned when she was lost. Who remembered the schooner with pride? Mariner's wife Jane Williams aged 50 in Number 4, (Bwythyn Bach), or mariner's widow Jane Davies aged 27 in Number 1, (Glasfôr)? Certainly in 1910 a Joseph Davies was to own all the houses. Was he a descendant of Elizabeth Davies who married the Captain? Or her Davies family we know who lived in Morfa Borth?

In the 1901 Census Number Four Maglona Place was either empty or everyone was away.

In 1904 the house is marked in red. Once again all six houses had the same owner. There were two rows of sea defences, and a fence at the edge of the sand. There had been a bad storm in 1896 with considerable damage and a tenant at Number 1 (Glasfôr) had lost his life. Chesterton and Gordon Villa dated 1891 had been built just to the north. (Cambrian News, February 1899 and a detail from the 25 inch revised in 1904, published in 1905, Cardiganshire as before)



In 1910 for a tax planned but not levied, the house was valued at £120. There would have been £3 2s 6d to pay, £4 12s 6d gross. Joseph Davies who owned all the houses in the terrace was the owner, and the occupier was Louisa Clarke (Ceredigion Archives, T/DV/18 and map at the National Library of Wales). In the 1911 Census the house is not in the list, no-one was there to fill in the form.

In 1925 and 1934 paying the rates was Lilian Clarke, she was the owner and occupier. The rates had increased - perhaps some improvements had been made? The house now had its name Bwythn Bach.

In 1938 and 1949 paying the rates was B. Hoult. With votes for the house in the General Election of 1945 were Douglas W. Williams and Valerie S. C. Jones who were probably living there.

In 1963 L. W. H. Hazelwood had been paying the rates but Mr Raw Rees had sold the house and the Council did not know the name of the new owner. Lucy Winifred Hazelwood had a vote for the house.

In July 1970 when the Aberystwyth Rural District Council was improving the sea defences behind the houses, the name Bwythn Bach was crossed out and 'Winkle Cottage' written in (List of work done - private owner).

In Borth houses with exposed stone walls and bricks, often yellow, round doors and windows and edges of walls were fashionable in the second half of the nineteenth century. Use of red bricks however is quite rare.

Archifdy Ceredigion Archives
yn cyflwyno / presents
Tai'r Borth / Houses of Borth
gan/by Beryl Lewis
[cyf/ref ADX/1629]

Mae **Tai'r Borth** yn cynnwys dros 350 hanes sy'n ymwneud ag adeiladau unigol ac mae'r hanesion wedi'u darlunio â chyfoeth o ffotograffau, mapiau a dogfennau. Mae'r ffeiliau ar gael ar ein gwefan: <https://www.archifdy-ceredigion.org.uk/tairborth.php?lang=cy>

Hoffem ddiolch i Beryl am fod mor garedig â chaniatáu i ni rannu ei gwaith â'r gynulleidfa ehangaf bosibl.

Ceidw Beryl Lewis yr hawlfraint yn ei gwaith ac mae'r hanesion yn cael eu rhannu at ddibenion preifat ac ymchwil yn unig.

Houses of Borth consists of over 350 histories of individual buildings, lavishly illustrated with photographs, maps and documents. All the files are available from our website: <https://www.archifdy-ceredigion.org.uk/tairborth.php>

We would like to thank Beryl for her kindness in letting us share her work with the widest possible audience.

Beryl Lewis retains the copyright in her work and the histories are made available for private use and research only.



Cyngor Sir
CEREDIGION
County Council



Archifdy
Ceredigion
Archives