

THE BUILDINGS OF MOREFA BORTH

- the Marsh Harbour

Ceredigion



That part of Borth Village on a pebble bank with the sea on one side and the Cors Fochno marsh some reclaimed and the railway on the other. In the distance is the River Dyfi. Photograph Michael Lewis

Photographs and History by BERYL LEWIS

This work is for research and educational purposes only.

THE ADRIFT GALLERY shop and LYNBROOK

Most recently a shop called Lynbourne beside the east side of the High Street and with Lynbrook behind it. Originally a small cottage there of William Williams a master mariner. Later a Griffiths family's Bristol House grocery shop and home. Their house behind was called Mona House.



As Lynbourne in 2009.

The Adrift Gallery, is a gabled building of two storeys and seems purpose built as a shop with rooms above. The walls are rendered are modern. The shop has accommodation at the rear. On the ground floor at the southern side of the shop is a single storey modern extension with glass shop windows. It has a wooden door opening into the side passage between the shop and the shop next door. This door is not in use.

BELOW At the back is Lynbrook, two storeys high.





LEFT In the foreground is the glazed extension of the shop front photographed in April 2013 with a later nineteenth century building of rubble stone edged by yellow bricks beyond, and the modern house Lynbrook at the back. The rubble stone building does not have rounded beach stones and its windows and eastern wall are edged with yellow bricks. There is a brick chimney with a moulded bands around it. The window sills are stone. The central upper window has a stone beam across the top. The windows have modern frames but in the style of a sash window. The ground floor has a lean to glazed extension with a front door on the western end. At the far end of this is a wall about half the height of the buildings which gives privacy to a modern two storey house, Lynbrook which is the furthest part of this terrace. Access is wide enough for cars between this buildings and the former Pine Centre next door.

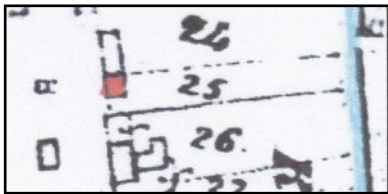
This building stands on the embankment of stones thrown up by the sea and the Crown Manor who owned it called it 'waste' as it was no use for farming. In 1822 a strip of it was enclosed by William Williams and he had a cottage on it and paid rent for it to the Crown. He had the option to buy it.



LEFT In 1829 his strip of ground was Number 34 on this detail from a map. The ground was 1 rod 28 perches - just over a quarter of an acre, and extended to a brook of fresh water. The map was hand painted in colours to show ownership (Map National Archives LRRO 1/3060)

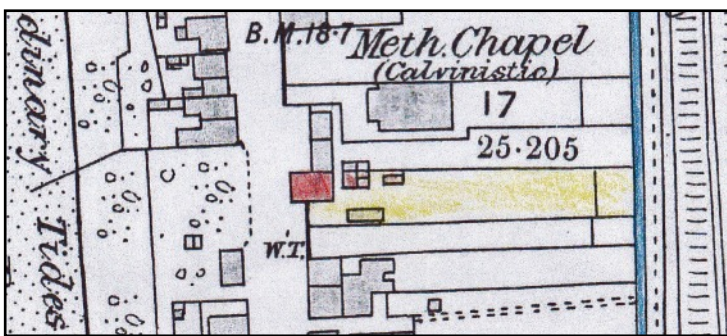
William Williams a master mariner was the captain of several wooden sailing ships in the coastal trade and he had shares in others. He owned the Mermaid, a sloop built in Newquay in 1811 and would have been able to earn a good living for his wife Mary and son William - who also became a master mariner. William Williams was also captain of the sloops Victory (1829) and Anna Maria (1837) - he owned 48 shares in her and was the managing owner arranging the cargoes and paying the crews, he was also captain of the schooner Frances (1845), the sloop New Gift (1841) the Eleanor and Betsy (1847) the Hope (1849)

the Ocean Bell (1859) and had shares in other vessels. He became wealthy enough to lend money for mortgages (December 1851) (Aberystwyth Register of Shipping, Ceredigion Archives). William Williams died on 3rd January 1861 and Mary his wife in 1868



LEFT The cottage was Number 25 in 1848 and is coloured red. William Williams lived there. The building next door Number 26 was the White Lion Inn (now part is Mayfield). (Detail from the Tithe map for Llanfihangel Genau'r Glyn, Cyfoeth township on-line at CYNEFIN)

By 1868 Census's show that a family called Griffiths were living next door to the White Lion (there was a strip of empty land between on which today stands the former Pine Centre). Evan Griffiths was an agricultural labourer from Pentrebach Staylittie, born about 1826. His wife Elisa was from Gwastad (Upper) Borth and born about 1832 or 1833. By 1881 Evan had set up a grocery shop and called it Bristol House.

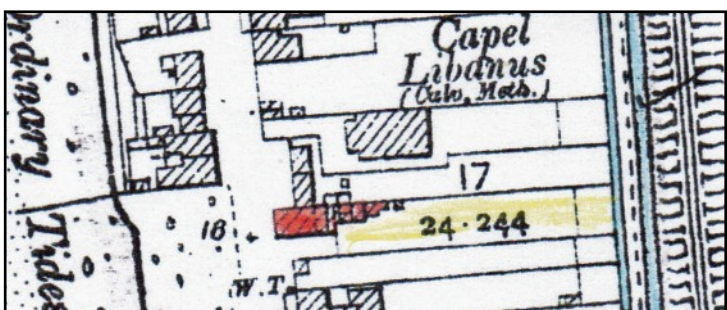


LEFT In 1886 the Griffith's Bristol House is marked in red. It extended out into the street from the original line of cottages and contained their grocery shop. It was much larger, and I suggest the stone building edged by yellow bricks was now part of it. The small buildings behind could be a Ty Bach - outside lavatory - and

perhaps a pig sty (A detail from the 25 inch Ordnance Survey Map of 1888 surveyed in 1886 and published in 1888, Cardiganshire NW III.10)

Mrs Eliza Griffiths was the grocer there in 1895 (Kelly's Directory of South Wales). Evan Griffiths her husband was both a grocer and a carrier. Their daughter was Ann Davies a mariner's wife. Another daughter Mary was a servant. In 1891 the address had changed to 'Libanus Place' after the nearby Chapel.

In the 1901 the Griffith's daughter Anne Davies the 44 year old wife of Evan Davies was living there with her 15 year old son Evan John Davies. (1886) and was running the Bristol House grocery shop. The home behind it was called 'Mona House'. Ann Davies was born in Borth about 1858, and wed in 1886. She also had a daughter Mary Annie (1897) (Census)



LEFT In this detail of the 1905 map there are more small buildings at the rear. On the ground to the south marked WT (wireless telegraph station) the Bakery which will become the Pine Centre would be being built in 1904 (A detail from the 25 inch Ordnance Survey Map of 1905 revised in 1904, Cardiganshire NW III.10)

In 1910 for a tax planned but not levied Mona House was valued at £130, with £4 to pay and £5 gross Evan Davies owned 'Mona'. In the 1911 Census Anne Davies is still there, aged 53 running the shop. Mona House had four main rooms.



LEFT An old postcard of 'Borth' shows in the foreground the former Bakery of W. D. Jones, later the Pine Centre. Next door was what now the Adrift Gallery, with a prominent porch with a notice on the wall above it. This photograph dates from after 1904 when the 'Bakery' was built. (Postcard courtesy of Roy Jones via Mrs Gwyn Dickinson)

RIGHT Another glimpse of the Bristol House grocery, we cannot see all the front, but it did not yet have the later wide glass shop front. However it had a chimney probably brick and the walls were

rendered.

After 1922 furnished apartments with four bedrooms and two sitting rooms were advertised in The Illustrated Borth Guide. This suggests some building had gone on and the place was larger. In 1925 Evan Davies was still there paying the Rates as the owner of Mona and he also owned Bristol House, the shop fronting the street. His son was a fine seaman, Evan Leslie Davies, OBE for WW2 services (Terry Davies Borth A Maritime History page 78)

Paying the rates in 1934 for Bristol House was Annie M. Davies. Then Evan Davies paid until January 1944 when Arthur Ford paid. In 1938 the Council did not know who was to pay rates for the shop.



By 1945 with votes at the General Election were M. A. Davies in Mona, but W. W. Robert and Frances Robert had votes for Bristol House. Mr Davies paid the rates for Mona in 1949. That year one of the Miss Davies was on the committee of the Borth Women's British Legion. Paying the Rates for 'Bristol House' was Watson. The Council did not have his full name.

In 1957 Francis Joe Watson paid the rates for Bristol House, and paying the rates for Mona was Mr Lees. He sold newspapers, stationery and tobacco in a shop across the High Street in Ystwyth.

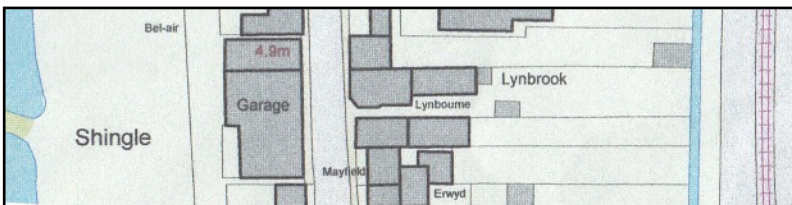
By 1963 the name of the shop had become Lynbourne. Now £46 was paid half yearly by Mr Lees for the shop and premises, Harold and Miranda Lees had votes for the place. There was no mention of a Lynbrook. Mr Roy Jones later had the shop with the name 'Lynbourne'



selling stationary, newspapers, sweets and gifts. There was a newspaper delivery service. The modern house at the rear had the name Lynbrook. When Mr Jones retired the shop became the Adrift Gallery.

LEFT This is from a postcard of 1964 and shows the shop under Harold Lees. Newspapers were sold there as there is an advertisement for the Daily Mail in the doorway. There were older window frames. As today the rendering around the shop window has patterns of ashlar masonry blocks in the plaster. The passage beside the shop was shut by a low wall and a gate.

BELOW LEFT The range of building on a modern Council Map. There was already the extension on the south side of the shop front and the garden still extended to the former brook, by then a ditch (Detail from a Council Map courtesy of Councillor Ray Quant when assisting research for a local event)



BELOW The rear in 2018.



Archifdy Ceredigion Archives
yn cyflwyno / presents
Tai'r Borth / Houses of Borth
gan/by Beryl Lewis
[cyf/ref ADX/1629]

Mae **Tai'r Borth** yn cynnwys dros 350 hanes sy'n ymwneud ag adeiladau unigol ac mae'r hanesion wedi'u darlunio â chyfoeth o ffotograffau, mapiau a dogfennau. Mae'r ffeiliau ar gael ar ein gwefan: <https://www.archifdy-eredigion.org.uk/tairborth.php?lang=cy>

Hoffem ddiolch i Beryl am fod mor garedig â chaniatáu i ni rannu ei gwaith â'r gynulleidfa ehangaf bosibl.

Ceidw Beryl Lewis yr hawlfraint yn ei gwaith ac mae'r hanesion yn cael eu rhannu at ddibenion preifat ac ymchwil yn unig.

Houses of Borth consists of over 350 histories of individual buildings, lavishly illustrated with photographs, maps and documents. All the files are available from our website: <https://www.archifdy-eredigion.org.uk/tairborth.php>

We would like to thank Beryl for her kindness in letting us share her work with the widest possible audience.

Beryl Lewis retains the copyright in her work and the histories are made available for private use and research only.



Cyngor Sir
CEREDIGION
County Council



Archifdy
Ceredigion
Archives